

---

**Product Name: CREB (1E9) Mouse Monoclonal Antibody****Catalog #: AMM03539**

For research use only.

**Summary**

<b>Description</b>	Mouse monoclonal Antibody
<b>Host</b>	Mouse
<b>Application</b>	WB
<b>Reactivity</b>	Human,Rat
<b>Conjugation</b>	Unconjugated
<b>Modification</b>	Unmodified
<b>Isotype</b>	IgG1
<b>Clonality</b>	Monoclonal
<b>Form</b>	Liquid
<b>Concentration</b>	1mg/ml
<b>Storage</b>	Aliquot and store at -20°C (valid for 12 months). Avoid freeze/thaw cycles.
<b>Shipping</b>	Ice bags
<b>Buffer</b>	Liquid in PBS containing 50% glycerol, 0.5% protective protein and 0.02% sodium azide, pH 7.3.
<b>Purification</b>	Affinity Purification

**Application**

<b>Dilution Ratio</b>	WB 1:500-1:1000
<b>Molecular Weight</b>	Calculated MW: 35 kDa; Observed MW: 43 kDa

**Antigen Information**

<b>Gene Name</b>	CREB1
<b>Alternative Names</b>	CREB1; Cyclic AMP-responsive element-binding protein 1; CREB-1; cAMP-responsive element-binding protein 1
<b>Gene ID</b>	1385
<b>SwissProt ID</b>	P16220
<b>Immunogen</b>	A synthetic peptide corresponding to target protein

**Background**

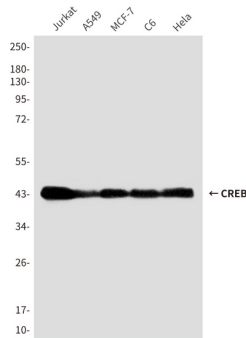
This gene encodes a transcription factor that is a member of the leucine zipper family of DNA binding proteins. This protein

binds as a homodimer to the cAMP-responsive element, an octameric palindrome.

## Research Area

Epigenetics and Nuclear Signaling

## Image Data



Western blot analysis of CREB in Jurkat, A549, MCF-7, C6 and HeLa lysates using CREB antibody.