

---

**Product Name: Smad2 (6H5) Mouse Monoclonal Antibody****Catalog #: AMM03490**

For research use only.

**Summary**

<b>Description</b>	Mouse monoclonal Antibody
<b>Host</b>	Mouse
<b>Application</b>	WB,ICC/IF
<b>Reactivity</b>	Human,Mouse
<b>Conjugation</b>	Unconjugated
<b>Modification</b>	Unmodified
<b>Isotype</b>	IgG1
<b>Clonality</b>	Monoclonal
<b>Form</b>	Liquid
<b>Concentration</b>	1mg/ml
<b>Storage</b>	Aliquot and store at -20°C (valid for 12 months). Avoid freeze/thaw cycles.
<b>Shipping</b>	Ice bags
<b>Buffer</b>	Liquid in PBS containing 50% glycerol, 0.5% protective protein and 0.02% sodium azide, pH 7.3.
<b>Purification</b>	Affinity Purification

**Application**

<b>Dilution Ratio</b>	WB 1:500-1:1000,ICC/IF 1:50-1:200
<b>Molecular Weight</b>	Calculated MW: 52 kDa; Observed MW: 60 kDa

**Antigen Information**

<b>Gene Name</b>	SMAD2 SMAD2; MADH2; MADR2; Mothers against decapentaplegic homolog 2; MAD homolog 2;
<b>Alternative Names</b>	Mothers against DPP homolog 2; JV18-1; Mad-related protein 2; hMAD-2; SMAD family member 2; SMAD 2; Smad2; hSMAD2
<b>Gene ID</b>	4087
<b>SwissProt ID</b>	Q15796
<b>Immunogen</b>	A synthetic peptide corresponding to target protein

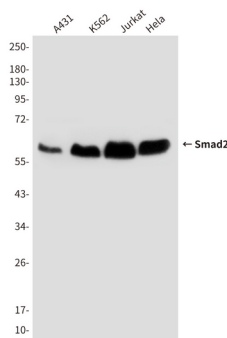
**Background**

The protein encoded by this gene belongs to the SMAD, a family of proteins similar to the gene products of the *Drosophila* gene 'mothers against decapentaplegic' (Mad) and the *C. elegans* gene Sma. SMAD proteins are signal transducers and transcriptional modulators that mediate multiple signaling pathways.

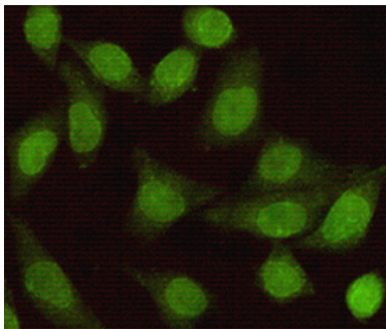
## Research Area

Signal Transduction

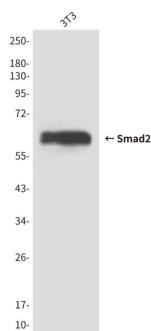
## Image Data



Western blot analysis of Smad2 in HeLa, A431, Jurkat and K562 lysates using Smad2 antibody.



Immunocytochemistry analysis of Smad2 (6H5) in HeLa using Smad2 antibody.



Western blot analysis of Smad2 (6H5) in 3T3 lysates using Smad2 antibody.