

---

**Product Name: TBL1XR1 (4F3) Mouse Monoclonal Antibody****Catalog #: AMM03435**

For research use only.

**Summary**

<b>Description</b>	Mouse monoclonal Antibody
<b>Host</b>	Mouse
<b>Application</b>	WB,IHC,ICC/IF
<b>Reactivity</b>	Human,Mouse
<b>Conjugation</b>	Unconjugated
<b>Modification</b>	Unmodified
<b>Isotype</b>	IgG1
<b>Clonality</b>	Monoclonal
<b>Form</b>	Liquid
<b>Concentration</b>	1mg/ml
<b>Storage</b>	Aliquot and store at -20°C (valid for 12 months). Avoid freeze/thaw cycles.
<b>Shipping</b>	Ice bags
<b>Buffer</b>	Liquid in PBS containing 50% glycerol, 0.5% protective protein and 0.02% sodium azide, pH 7.3.
<b>Purification</b>	Affinity Purification

**Application**

<b>Dilution Ratio</b>	WB 1:500-1:1000,IHC 1:50-1:100,ICC/IF 1:50-1:200
<b>Molecular Weight</b>	Calculated MW: 56 kDa; Observed MW: 60 kDa

**Antigen Information**

<b>Gene Name</b>	TBL1XR1 C21; DC42; F box like/WD repeat containing protein TBL1XR1; F-box-like/WD repeat-containing protein TBL1XR1; FLJ12894; IRA1; Nuclear receptor corepressor/HDAC3 complex subunit; Nuclear receptor corepressor/HDAC3 complex subunit TBLR1; TBL1 related protein 1; TBL1-related protein 1; TBL1R_HUMAN; TBL1XR1; Transducin (beta) like 1 X linked receptor 1; Transducin beta like 1X related protein 1; Transducin beta-like 1X-related protein 1.
<b>Alternative Names</b>	
<b>Gene ID</b>	79718
<b>SwissProt ID</b>	Q9BZK7

## Immunogen

A synthetic peptide of human TBLR1

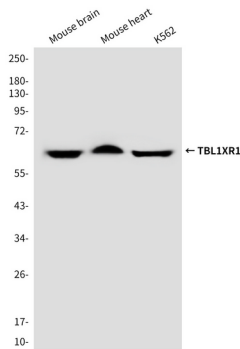
## Background

F-box-like protein involved in the recruitment of the ubiquitin/19S proteasome complex to nuclear receptor-regulated transcription units. Plays an essential role in transcription activation mediated by nuclear receptors.

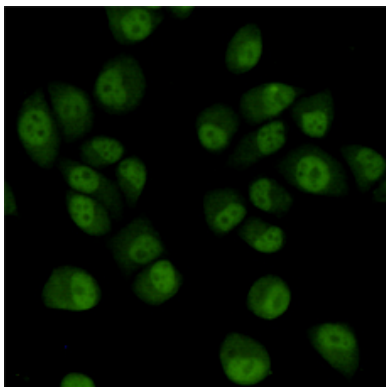
## Research Area

Epigenetics and Nuclear Signaling

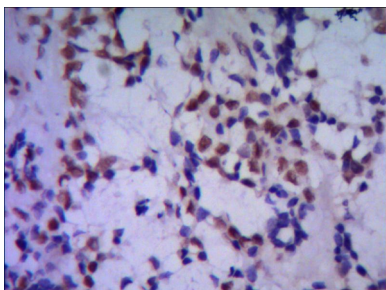
## Image Data



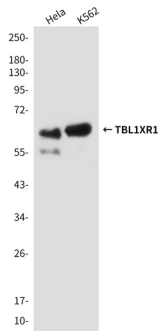
Western blot analysis of TBLR1 in mouse brain, mouse heart and K562 lysates using TBLR1 antibody.



Immunocytochemistry analysis of TBL1XR1 (4F3) in HeLa using TBLR1 antibody.



Immunohistochemistry analysis of paraffin-embedded human breast cancer using TBLR1 antibody. High-pressure and temperature Sodium Citrate pH 6.0 was used for antigen retrieval.



Western blot analysis of TBL1XR1 (4F3) in HeLa, K562 lysates using TBL1XR1 (4F3) antibody