

**Product Name: PPP4C (2F11) Mouse Monoclonal Antibody****Catalog #: AMM03425**

For research use only.

**Summary**

<b>Description</b>	Mouse monoclonal Antibody
<b>Host</b>	Mouse
<b>Application</b>	WB,IHC,ICC/IF
<b>Reactivity</b>	Human
<b>Conjugation</b>	Unconjugated
<b>Modification</b>	Unmodified
<b>Isotype</b>	IgG2a
<b>Clonality</b>	Monoclonal
<b>Form</b>	Liquid
<b>Concentration</b>	1mg/ml
<b>Storage</b>	Aliquot and store at -20°C (valid for 12 months). Avoid freeze/thaw cycles.
<b>Shipping</b>	Ice bags
<b>Buffer</b>	Liquid in PBS containing 50% glycerol, 0.5% protective protein and 0.02% sodium azide, pH 7.3.
<b>Purification</b>	Affinity Purification

**Application**

<b>Dilution Ratio</b>	WB 1:500-1:1000,IHC 1:50-1:100,ICC/IF 1:50-1:200
<b>Molecular Weight</b>	Calculated MW: 35 kDa; Observed MW: 35 kDa

**Antigen Information**

<b>Gene Name</b>	PPP4C
<b>Alternative Names</b>	PP4; PPX; PP4C; PPH3; PPP4
<b>Gene ID</b>	5531
<b>SwissProt ID</b>	P60510
<b>Immunogen</b>	Recombinant protein of human PPP4C

**Background**

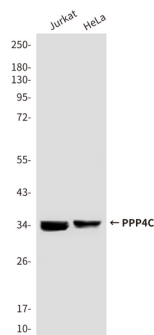
In eukaryotes, the phosphorylation and dephosphorylation of proteins on serine and threonine residues is an essential means of regulating a broad range of cellular functions, including division, homeostasis and apoptosis. A group of proteins that are

intimately involved in this process are the protein phosphatases. In general, the protein phosphatase (PP) holoenzyme is a trimeric complex composed of a regulatory subunit, a variable subunit and a catalytic subunit. Four major families of protein phosphatase catalytic subunits have been identified, designated PP1, PP2A, PP2B (calcineurin) and PP2C. An additional protein phosphatase catalytic subunit, PPX (also known as PP4) is a putative member of a novel PP family.

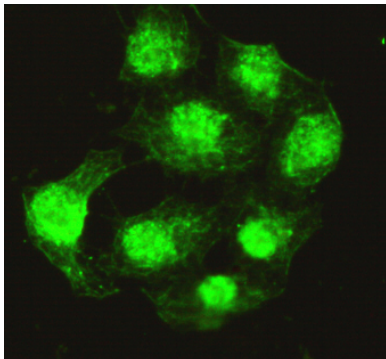
## Research Area

Signal Transduction

## Image Data



Western blot analysis of Protein Phosphatase 4C in HeLa and Jurkat lysates using Protein Phosphatase 4C antibody.



Immunocytochemistry analysis of PPP4C in HeLa cells using PPP4C antibody.

Immunohistochemistry analysis of paraffin-embedded Human breast cancer using Protein Phosphatase 4C antibody. High-pressure and temperature Sodium Citrate pH 6.0 was used for antigen retrieval.