

Product Name: KLF4 (3B3) Mouse Monoclonal Antibody
Catalog #: AMM03421



Summary

Production Name	KLF4 (3B3) Mouse Monoclonal Antibody
Description	Mouse Monoclonal Antibody
Host	Mouse
Application	WB
Reactivity	Human,Mouse,Rat

Performance

Conjugation	Unconjugated
Modification	Unmodified
Isotype	IgG2b
Clonality	Monoclonal
Form	Liquid
Storage	Store at 4°C short term. Aliquot and store at -20°C long term. Avoid freeze/thaw cycles.
Buffer	Liquid in PBS containing 50% glycerol, 0.5% protective protein and 0.02% sodium azide, pH 7.3.
Purification	Affinity Purification

Immunogen

Gene Name	KLF4
Alternative Names	Endothelial Kruppel like zinc finger protein; Epithelial zinc finger protein EZF; EZF; GKLF; Gut-enriched krueppel-like factor; KLF; KLF4; KLF4_HUMAN; Krueppel-like factor 4; Kruppel like factor 4; Epithelial zinc finger protein EZF; Gut enriched Krueppel like factor; Kruppel like factor 4 (gut).
Gene ID	9314
SwissProt ID	O43474.

Application

Dilution Ratio	WB: 1:500-1:1000
Molecular Weight	Calculated MW: 55 kDa; Observed MW: 55,65 kDa

Product Name: KLF4 (3B3) Mouse Monoclonal Antibody
Catalog #: AMM03421



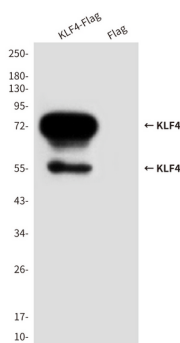
Background

KLF4 is a member of the erythroid Kruppel-like factor (EKLF) multigene family that is highly expressed in the differentiating layers of the epidermis. KLF4 plays a critical role in the differentiation of epithelial cells and is essential for normal gastric homeostasis and function as both a repressor and activator of transcription.

Research Area

Epigenetics and Nuclear Signaling

Image Data



Western blot analysis of KLF4 (3B3) in CHO-K1 lysates, transfected with pcDNA3.1Hygro(+)mKLF4Flag construct (A) or transfected with pDNA3.1Hygro(+)Flag vector (B), using KLF4 antibody.

Note

For research use only.