
Product Name: Human IgM (3E12) Mouse Monoclonal Antibody**Catalog #: AMM03336**

For research use only.

Summary

Description	Mouse monoclonal Antibody
Host	Mouse
Application	IHC,ELISA
Reactivity	Human
Conjugation	Unconjugated
Modification	Unmodified
Isotype	IgG2a
Clonality	Monoclonal
Form	Liquid
Concentration	1mg/ml
Storage	Aliquot and store at -20°C (valid for 12 months). Avoid freeze/thaw cycles.
Shipping	Ice bags
Buffer	Liquid in PBS containing 50% glycerol, 0.5% protective protein and 0.02% sodium azide, pH 7.3.
Purification	Affinity Purification

Application

Dilution Ratio	IHC 1:50-1:100,ELISA 1:5000-1:20000
Molecular Weight	-

Antigen Information

Gene Name	IGHM
Alternative Names	Ig mu chain C region
Gene ID	3507.0
SwissProt ID	P01871
Immunogen	Recombinant protein of human IgM

Background

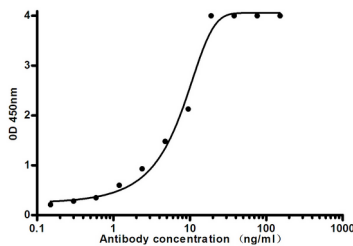
IgM measurement yields information about the body's immediate resistance and response to infection as well as information related to specific diseases. Decreased levels are associated with immune deficiency states, hereditary deficiencies, and

myeloma. Increased levels can be associated with Waldenstrom's macroglobulinemia, chronic infection and hepatocellular disease.

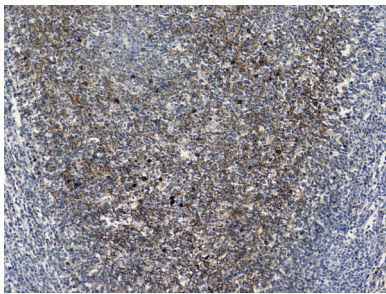
Research Area

Immunology

Image Data



Indirect ELISA assay for mouse Human IgM antibody. Antigen coating concentration: 2ug/ml.



Immunohistochemical analysis of paraffin-embedded Human tonsils using Human IgM (3E12) antibody. High-pressure and temperature Sodium Citrate pH 6.0 was used for antigen retrieval.