
Product Name: CKM (6A12) Mouse Monoclonal Antibody**Catalog #: AMM03324**

For research use only.

Summary

Description	Mouse monoclonal Antibody
Host	Mouse
Application	ELISA
Reactivity	Human
Conjugation	Unconjugated
Modification	Unmodified
Isotype	IgG2b
Clonality	Monoclonal
Form	Liquid
Concentration	1mg/ml
Storage	Aliquot and store at -20°C (valid for 12 months). Avoid freeze/thaw cycles.
Shipping	Ice bags
Buffer	Liquid in PBS containing 50% glycerol, 0.5% protective protein and 0.02% sodium azide, pH 7.3.
Purification	Affinity Purification

Application

Dilution Ratio	ELISA 1:5000-1:20000
Molecular Weight	-

Antigen Information

Gene Name	CKM
Alternative Names	CKM; CKMM; Creatine kinase M-type; Creatine kinase M chain; M-CK
Gene ID	1158
SwissProt ID	P06732
Immunogen	

Background

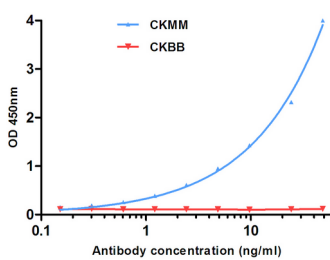
The protein encoded by this gene is a cytoplasmic enzyme involved in energy homeostasis and is an important serum marker for myocardial infarction. The encoded protein reversibly catalyzes the transfer of phosphate between ATP and various

phosphogens such as creatine phosphate. It acts as a homodimer in striated muscle as well as in other tissues, and as a heterodimer with a similar brain isozyme in heart. The encoded protein is a member of the ATP:guanido phosphotransferase protein family.

Research Area

Signal Transduction

Image Data



Indirect ELISA assay for antiCKMM mouse mAb. CKBB as control antigen. Antigen coating concentration: 4ug/ml.