

Product Name: RBP4 (7C5) Mouse Monoclonal Antibody**Catalog #: AMM03322**

For research use only.

Summary

| | |
|----------------------|--|
| Description | Mouse monoclonal Antibody |
| Host | Mouse |
| Application | ELISA |
| Reactivity | Human |
| Conjugation | Unconjugated |
| Modification | Unmodified |
| Isotype | IgG1 |
| Clonality | Monoclonal |
| Form | Liquid |
| Concentration | 1mg/ml |
| Storage | Aliquot and store at -20°C (valid for 12 months). Avoid freeze/thaw cycles. |
| Shipping | Ice bags |
| Buffer | Liquid in PBS containing 50% glycerol, 0.5% protective protein and 0.02% sodium azide, pH 7.3. |
| Purification | Affinity Purification |

Application

| | |
|-------------------------|----------------------|
| Dilution Ratio | ELISA 1:5000-1:20000 |
| Molecular Weight | - |

Antigen Information

| | |
|--------------------------|---|
| Gene Name | RBP4 |
| Alternative Names | OTTHUMP00000020114; OTTHUMP00000020115; OTTHUMP00000020116; Plasma retinol binding protein 4; Plasma retinol-binding protein; Plasma retinol-binding protein(1-176); PRBP; PRO2222; RBP; RBP4; RDCCAS; RET4_HUMAN; Retinol binding protein 4; Retinol binding protein 4 interstitial; Retinol binding protein 4 plasma. |
| Gene ID | 5950 |
| SwissProt ID | P02753 |
| Immunogen | A synthetic peptide of human RBP4 |

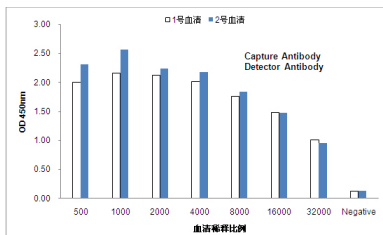
Background

Delivers retinol from the liver stores to the peripheral tissues. In plasma, the RBP-retinol complex interacts with transthyretin, this prevents its loss by filtration through the kidney glomeruli.

Research Area

Cardiovascular

Image Data



Standard Curve for RBP4: Capture Antibody mouse mAb (8C12C11) to RBP4 and Detector Antibody mouse mAb(7C5F6) to RBP4.