

---

**Product Name: EGF (5E9) Mouse Monoclonal Antibody****Catalog #: AMM03317**

For research use only.

**Summary**

<b>Description</b>	Mouse monoclonal Antibody
<b>Host</b>	Mouse
<b>Application</b>	ELISA
<b>Reactivity</b>	Human
<b>Conjugation</b>	Unconjugated
<b>Modification</b>	Unmodified
<b>Isotype</b>	IgG1
<b>Clonality</b>	Monoclonal
<b>Form</b>	Liquid
<b>Concentration</b>	1mg/ml
<b>Storage</b>	Aliquot and store at -20°C (valid for 12 months). Avoid freeze/thaw cycles.
<b>Shipping</b>	Ice bags
<b>Buffer</b>	Liquid in PBS containing 50% glycerol, 0.5% protective protein and 0.02% sodium azide, pH 7.3.
<b>Purification</b>	Affinity Purification

**Application**

<b>Dilution Ratio</b>	ELISA 1:5000-1:20000
<b>Molecular Weight</b>	-

**Antigen Information**

<b>Gene Name</b>	EGF AI790464; Beta urogastrone; Epidermal Growth Factor; HOMG4; OTTHUMP00000219721;
<b>Alternative Names</b>	OTTHUMP00000219722; Pro epidermal growth factor; Pro epidermal growth factor precursor (EGF); URG; Urogastrone .
<b>Gene ID</b>	1950
<b>SwissProt ID</b>	P01133
<b>Immunogen</b>	Recombinant protein of human Pro-EGF

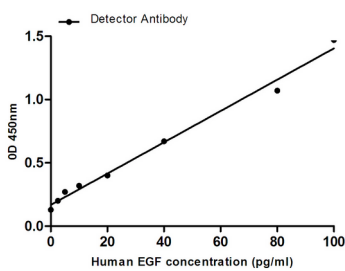
**Background**

EGF stimulates the growth of various epidermal and epithelial tissues in vivo and in vitro and of some fibroblasts in cell culture. Magnesiotropic hormone that stimulates magnesium reabsorption in the renal distal convoluted tubule via engagement of EGFR and activation of the magnesium channel TRPM6.

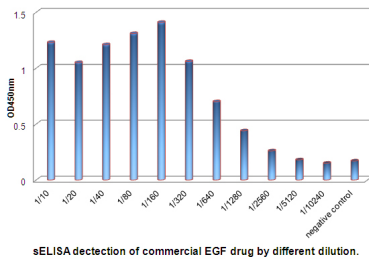
## Research Area

Signal Transduction

## Image Data



Standard Curve for Human EGF: Capture Antibody mouse mAb 2011655E9 (5E9A10A6) to Human EGF at 4ug/ml and Detector Antibody mouse mAb 2011657C11(7C11G10H8) to Human EGF at 1ug/ml.



sELISA detection of commercial EGF drug by different dilution.