
Product Name: Leptin (5C11) Mouse Monoclonal Antibody**Catalog #: AMM03315**

For research use only.

Summary

Description	Mouse monoclonal Antibody
Host	Mouse
Application	ELISA
Reactivity	Human
Conjugation	Unconjugated
Modification	Unmodified
Isotype	IgG2a
Clonality	Monoclonal
Form	Liquid
Concentration	1mg/ml
Storage	Aliquot and store at -20°C (valid for 12 months). Avoid freeze/thaw cycles.
Shipping	Ice bags
Buffer	Liquid in PBS containing 50% glycerol, 0.5% protective protein and 0.02% sodium azide, pH 7.3.
Purification	Affinity Purification

Application

Dilution Ratio	ELISA 1:5000-1:20000
Molecular Weight	-

Antigen Information

Gene Name	LEP
Alternative Names	OB; OBS; LEPD; LEP
Gene ID	3952
SwissProt ID	P41159
Immunogen	

Background

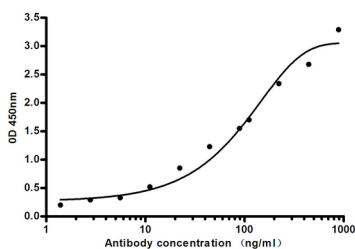
This gene encodes a protein that is secreted by white adipocytes, and which plays a major role in the regulation of body weight. This protein, which acts through the leptin receptor, functions as part of a signaling pathway that can inhibit food intake and/or

regulate energy expenditure to maintain constancy of the adipose mass. This protein also has several endocrine functions, and is involved in the regulation of immune and inflammatory responses, hematopoiesis, angiogenesis and wound healing. Mutations in this gene and/or its regulatory regions cause severe obesity, and morbid obesity with hypogonadism. This gene has also been linked to type 2 diabetes mellitus development.

Research Area

Signal Transduction

Image Data



Indirect ELISA assay for antiLeptin mouse mAb. Antigen coating concentration: 4ug/ml.