

**Product Name: Acetyl-Alpha Tubulin (Lys40) (6B5) Mouse Monoclonal Antibody****Catalog #: AMM00903**

For research use only.

**Summary**

<b>Description</b>	Mouse monoclonal Antibody
<b>Host</b>	Mouse
<b>Application</b>	WB,IHC
<b>Reactivity</b>	Human,Rat,Mouse
<b>Conjugation</b>	Unconjugated
<b>Modification</b>	Acetylated
<b>Isotype</b>	IgG1
<b>Clonality</b>	Monoclonal
<b>Form</b>	Liquid
<b>Concentration</b>	1mg/ml
<b>Storage</b>	Aliquot and store at -20°C (valid for 12 months). Avoid freeze/thaw cycles.
<b>Shipping</b>	Ice bags
<b>Buffer</b>	Liquid in PBS containing 50% glycerol, 0.5% protective protein and 0.02% sodium azide, pH 7.3.
<b>Purification</b>	Affinity Purification

**Application**

<b>Dilution Ratio</b>	WB 1:500-1:1000,IHC 1:50-1:100
<b>Molecular Weight</b>	Calculated MW: 50 kDa; Observed MW: 50 kDa

**Antigen Information**

<b>Gene Name</b>	TUBA1B
<b>Alternative Names</b>	alpha tubulin 2; B alpha 1; H2 alpha; Hum a tub 1; TUBA1; TUBA1A; Tubulin alpha 1chain
<b>Gene ID</b>	10376
<b>SwissProt ID</b>	P68363
<b>Immunogen</b>	A synthetic Acetylated peptide corresponding to residues target protein

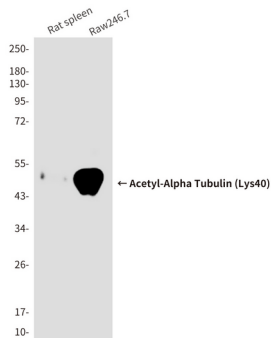
**Background**

TUBA1A Tubulin is the major constituent of microtubules. It binds two moles of GTP, one at an exchangeable site on the beta chain and one at a non-exchangeable site on the alpha-chain.

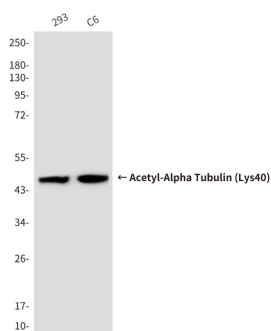
## Research Area

Signal Transduction

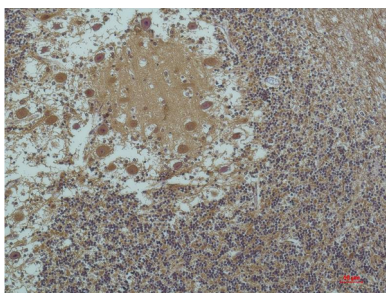
## Image Data



Western blot analysis of Acetyl-α-Tubulin (Lys40) in rat spleen, Raw246.7 lysates using Acetyl-α-Tubulin (Lys40) (6B5) antibody.



Western blot analysis of AcetylAlpha Tubulin (Lys40) (6B5) in 293, C6 lysates using Acetyl-α-Tubulin (Lys40) (6B5) antibody.



Immunohistochemistry analysis of paraffin-embedded Human Brain Tissue using α-tubulin(Acetyl Lys4) antibody. High-pressure and temperature Sodium Citrate pH 6.0 was used for antigen retrieval.