

Product Name: APG5L (3C10) Mouse Monoclonal Antibody**Catalog #: AMM00895**

For research use only.

Summary

Description	Mouse monoclonal Antibody
Host	Mouse
Application	WB,IHC
Reactivity	Human,Rat,Mouse
Conjugation	Unconjugated
Modification	Unmodified
Isotype	IgG1
Clonality	Monoclonal
Form	Liquid
Concentration	1mg/ml
Storage	Aliquot and store at -20°C (valid for 12 months). Avoid freeze/thaw cycles.
Shipping	Ice bags
Buffer	Liquid in PBS containing 50% glycerol, 0.5% protective protein and 0.02% sodium azide, pH 7.3.
Purification	Affinity Purification

Application

Dilution Ratio	WB 1:500-1:1000,IHC 1:50-1:100
Molecular Weight	Calculated MW: 32 kDa; Observed MW: 55 kDa

Antigen Information

Gene Name	ATG5
Alternative Names	APG 5L; APG5; APG5 autophagy 5 like; APG5 like; APG5-like; Apoptosis specific protein; ASP; ATG 5; ATG5 autophagy related 5 homolog; Autophagy protein 5; hAPG5
Gene ID	9474
SwissProt ID	Q9H1Y0
Immunogen	A synthetic peptide of human APG5L/ATG5

Background

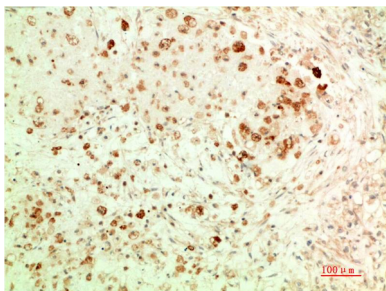
Required for autophagy. Conjugates to ATG12 and associates with isolation membrane to form cup-shaped isolation

membrane and autophagosome. Involved in mitochondrial quality control after oxidative damage, and in subsequent cellular longevity.

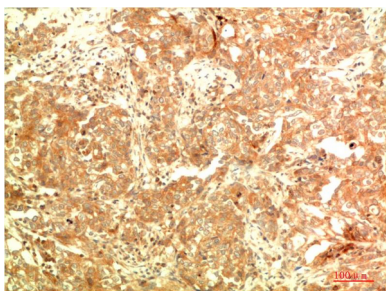
Research Area

Cell Biology

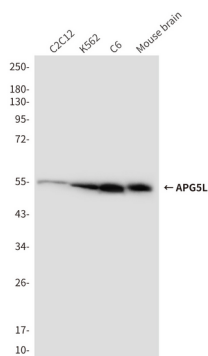
Image Data



Immunohistochemistry analysis of paraffin-embedded Human Ovarian Carcinoma Tissue using APG5L (3C10) antibody. High-pressure and temperature Sodium Citrate pH 6.0 was used for antigen retrieval.



Immunohistochemical analysis of paraffin-embedded Human tonsils using APG5L (3C10) antibody. High-pressure and temperature Sodium Citrate pH 6.0 was used for antigen retrieval.



Western blot analysis of APG5L (3C10) in C2C12, K562, C6, mouse brain lysates using APG5L (3C10) antibody