

Product Name: beta I Tubulin (1H10) Mouse Monoclonal Antibody**Catalog #: AMM00879**

For research use only.

Summary

Description	Mouse monoclonal Antibody
Host	Mouse
Application	WB,IHC,ICC/IF
Reactivity	Human,Rat,Mouse
Conjugation	Unconjugated
Modification	Unmodified
Isotype	IgG1
Clonality	Monoclonal
Form	Liquid
Concentration	1mg/ml
Storage	Aliquot and store at -20°C (valid for 12 months). Avoid freeze/thaw cycles.
Shipping	Ice bags
Buffer	Liquid in PBS containing 50% glycerol, 0.5% protective protein and 0.02% sodium azide, pH 7.3.
Purification	Affinity Purification

Application

Dilution Ratio	WB 1:500-1:1000,IHC 1:50-1:100,ICC/IF 1:50-1:200
Molecular Weight	Calculated MW: 50 kDa; Observed MW: 50 kDa

Antigen Information

Gene Name	TUBB1
Alternative Names	beta I tubulin; TBB1; TUBB1; Tubulin beta 1; Class VI beta tubulin
Gene ID	81027
SwissProt ID	Q9H4B7
Immunogen	A synthetic peptide of human beta I Tubulin

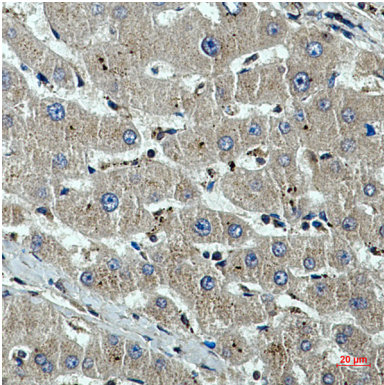
Background

Tubulin is the major constituent of microtubules. It binds two moles of GTP, one at an exchangeable site on the beta chain and one at a non-exchangeable site on the alpha chain (By similarity).

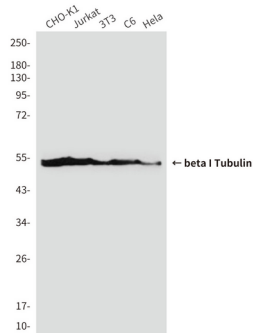
Research Area

Signal Transduction

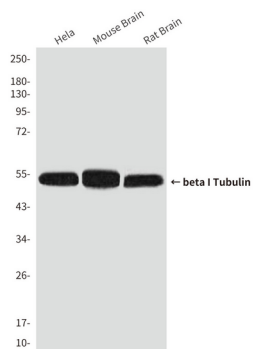
Image Data



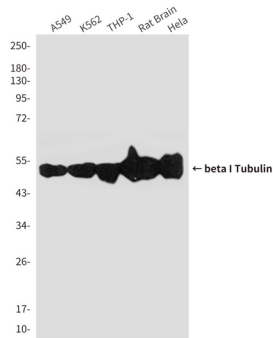
Immunohistochemistry analysis of paraffin-embedded beta I Tubulin in Human liver cancer using beta I Tubulin (1H10) antibody. High-pressure and temperature Sodium Citrate pH 6.0 was used for antigen retrieval.



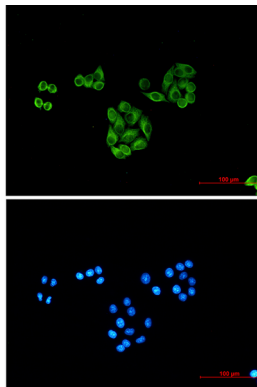
Western blot analysis of beta I Tubulin (1H10) in CHO-K1, Jurkat, 3T3, C6 and HeLa lysates using beta I Tubulin (1H10) antibody



Western blot analysis of beta I Tubulin (1H10) in HeLa, mouse Brain Tissue, rat Brain Tissue lysates using beta I Tubulin (1H10) antibody



Western blot analysis of beta I Tubulin (1H10) in A549, K562, THP-1, rat Brain, Hela lysates using beta I Tubulin (1H10) antibody.



Immunocytochemistry analysis of beta I Tubulin (1H10) (green) in Hela using beta I Tubulin (1H10) antibody, and DAPI (blue)