

**Product Name:** beta I Tubulin (8E6) Mouse Monoclonal Antibody**Catalog #:** AMM00871

For research use only.

**Summary**

<b>Description</b>	Mouse monoclonal Antibody
<b>Host</b>	Mouse
<b>Application</b>	WB
<b>Reactivity</b>	Zebrafish
<b>Conjugation</b>	Unconjugated
<b>Modification</b>	Unmodified
<b>Isotype</b>	IgG1
<b>Clonality</b>	Monoclonal
<b>Form</b>	Liquid
<b>Concentration</b>	1mg/ml
<b>Storage</b>	Aliquot and store at -20°C (valid for 12 months). Avoid freeze/thaw cycles.
<b>Shipping</b>	Ice bags
<b>Buffer</b>	Liquid in PBS containing 50% glycerol, 0.5% protective protein and 0.02% sodium azide, pH 7.3.
<b>Purification</b>	Affinity Purification

**Application**

<b>Dilution Ratio</b>	WB 1:500-1:1000
<b>Molecular Weight</b>	Calculated MW: 50 kDa; Observed MW: 50 kDa

**Antigen Information**

<b>Gene Name</b>	TUBB1
<b>Alternative Names</b>	beta I tubulin; TBB1; TUBB1; Tubulin beta 1; Class VI beta tubulin
<b>Gene ID</b>	81027
<b>SwissProt ID</b>	Q9H4B7
<b>Immunogen</b>	A synthetic peptide of human beta I Tubulin

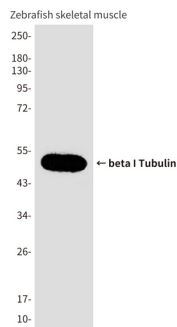
**Background**

Tubulin is the major constituent of microtubules. It binds two moles of GTP, one at an exchangeable site on the beta chain and one at a non-exchangeable site on the alpha chain (By similarity).

## Research Area

Signal Transduction

## Image Data



Western blot analysis of beta I Tubulin in Zebrafish skeletal muscle lysates using beta I Tubulin (8E6) antibody.