

Product Name: EFHD1 (5C10) Mouse Monoclonal Antibody
Catalog #: AMM00868

Summary

Production Name	EFHD1 (5C10) Mouse Monoclonal Antibody
Description	Mouse Monoclonal Antibody
Host	Mouse
Application	WB,IHC-P,ICC/IF
Reactivity	Human,Mouse,Rat

Performance

Conjugation	Unconjugated
Modification	Unmodified
Isotype	IgG1
Clonality	Monoclonal
Form	Liquid
Storage	Store at 4°C short term. Aliquot and store at -20°C long term. Avoid freeze/thaw cycles.
Buffer	Liquid in PBS containing 50% glycerol, 0.5% protective protein and 0.02% sodium azide, pH 7.3.
Purification	Affinity Purification

Immunogen

Gene Name	EFHD1
Alternative Names	EF-hand domain-containing protein D1; Mitocalcin; MGC103094; Swiprosin 2
Gene ID	80303
SwissProt ID	Q9BUP0.

Application

Dilution Ratio	WB: 1:500-1:1000 IHC: 1:50-1:100 IF: 1:50-1:200
Molecular Weight	Calculated MW: 27 kDa; Observed MW: 27 kDa

Product Name: EFHD1 (5C10) Mouse Monoclonal Antibody
Catalog #: AMM00868

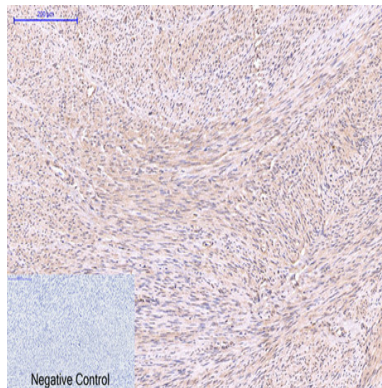
Background

Acts as a calcium sensor for mitochondrial flash (mitoflash) activation, an event characterized by stochastic bursts of superoxide production (PubMed:26975899). May play a role in neuronal differentiation .

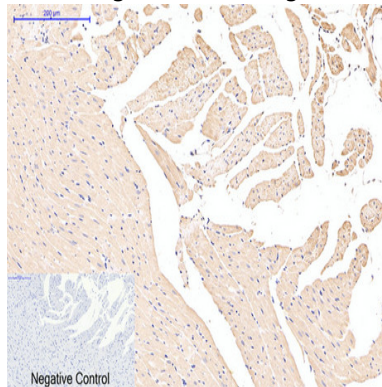
Research Area

Cell Biology

Image Data

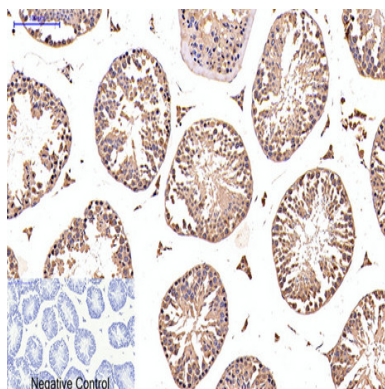


Immunohistochemistry analysis of paraffin-embedded Human uterus tissue using EFHD1 (5C10) antibody. High-pressure and temperature Sodium Citrate pH 6.0 was used for antigen retrieval. Negative control was used by secondary antibody only.

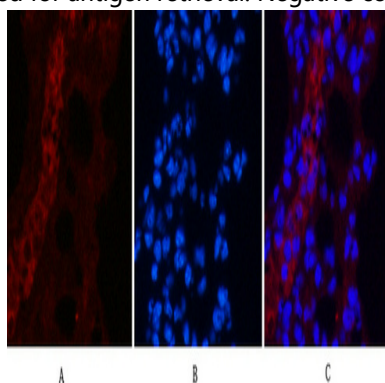


Immunohistochemistry analysis of paraffin-embedded Human tonsils using EFHD1 (5C10) antibody. High-pressure and temperature Sodium Citrate pH 6.0 was used for antigen retrieval. Negative control was used by secondary antibody only.

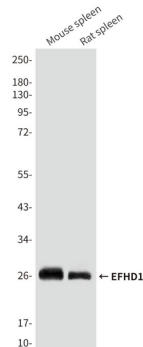
Product Name: EFHD1 (5C10) Mouse Monoclonal Antibody
Catalog #: AMM00868



Immunohistochemistry analysis of paraffin-embedded mouse testis tissue using EFHD1 antibody. High-pressure and temperature Sodium Citrate pH 6.0 was used for antigen retrieval. Negative control was used by secondary antibody only.

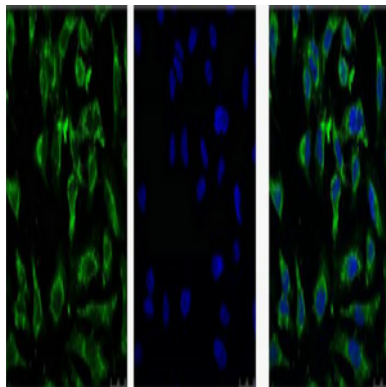


Immunofluorescence analysis of EFHD1 (5C10) in mouse lung using EFHD1 (5C10) antibody (3G2) (red), and DAPI (blue).



Western blot analysis of EFHD1 in mouse spleen, rat spleen tissue lysates using EFHD1 (5C10) antibody.

Product Name: EFHD1 (5C10) Mouse Monoclonal Antibody
Catalog #: AMM00868



Immunofluorescence analysis of EFHD1 in Hela using EFHD1 (5C10) antibody(Left) and DAPI (Right).

Note

For research use only.