

Product Name: alpha Lactalbumin (10B3) Mouse
Monoclonal Antibody
Catalog #: AMM00867

Summary

Production Name	alpha Lactalbumin (10B3) Mouse Monoclonal Antibody
Description	Mouse Monoclonal Antibody
Host	Mouse
Application	WB,IHC-P,ICC/IF
Reactivity	Human

Performance

Conjugation	Unconjugated
Modification	Unmodified
Isotype	IgG1
Clonality	Monoclonal
Form	Liquid
Storage	Store at 4°C short term. Aliquot and store at -20°C long term. Avoid freeze/thaw cycles.
Buffer	Liquid in PBS containing 50% glycerol, 0.5% protective protein and 0.02% sodium azide, pH 7.3.
Purification	Affinity Purification

Immunogen

Gene Name	LALBA
Alternative Names	Lactose synthase B protein; Alpha-lactalbumin; Lactalbumin alpha; MGC138521
Gene ID	3906
SwissProt ID	P00709.

Application

Dilution Ratio	WB: 1:500-1:1000 IHC: 1:50-1:100 IF: 1:50-1:200
Molecular Weight	Calculated MW: 16 kDa; Observed MW: 16 kDa

**Product Name: alpha Lactalbumin (10B3) Mouse
Monoclonal Antibody
Catalog #: AMM00867**

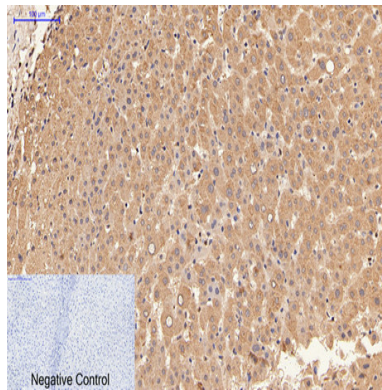
Background

Regulatory subunit of lactose synthase, changes the substrate specificity of galactosyltransferase in the mammary gland making glucose a good acceptor substrate for this enzyme. This enables LS to synthesize lactose, the major carbohydrate component of milk. In other tissues, galactosyltransferase transfers galactose onto the N-acetylglucosamine of the oligosaccharide chains in glycoproteins.

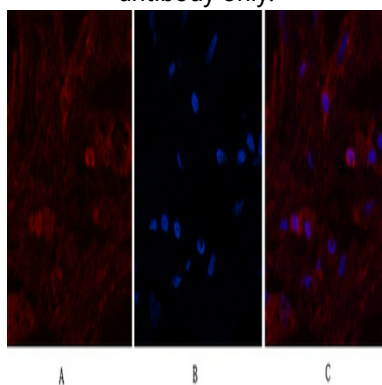
Research Area

Tags & Cell Markers

Image Data

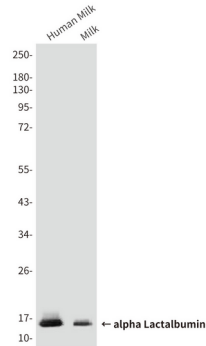


Immunohistochemistry analysis of paraffin-embedded Human liver tissue using alpha Lactalbumin (10B3) antibody. High-pressure and temperature Sodium Citrate pH 6.0 was used for antigen retrieval. Negative control was used by secondary antibody only.



Immunofluorescence analysis of alpha Lactalbumin (10B3) in Human breast tissue using alpha Lactalbumin antibody (red), and DAPI (blue).

**Product Name: alpha Lactalbumin (10B3) Mouse
Monoclonal Antibody
Catalog #: AMM00867**



Western blot analysis of alpha Lactalbumin (10B3) in Human Milk, Milk, lysates using alpha Lactalbumin (10B3) antibody

Note

For research use only.