

Product Name: Cytokeratin 6 (1A5) Mouse Monoclonal Antibody
Catalog #: AMM00865



Summary

Production Name	Cytokeratin 6 (1A5) Mouse Monoclonal Antibody
Description	Mouse Monoclonal Antibody
Host	Mouse
Application	WB,IHC-P,ICC/IF
Reactivity	Human

Performance

Conjugation	Unconjugated
Modification	Unmodified
Isotype	IgG1
Clonality	Monoclonal
Form	Liquid
Storage	Store at 4°C short term. Aliquot and store at -20°C long term. Avoid freeze/thaw cycles.
Buffer	Liquid in PBS containing 50% glycerol, 0.5% protective protein and 0.02% sodium azide, pH 7.3.
Purification	Affinity Purification

Immunogen

Gene Name	KRT6A/KRT6B/KRT6C
Alternative Names	CK 6A; CK 6B; CK 6C; CK 6D; CK 6E; CK-6C; CK-6E; K6a keratin; K6b keratin; K6C; K6c keratin; K6d keratin; K6e keratin; Keratin; KRT6A; KRT6B; KRT6C; KRT6D; KRT6E
Gene ID	3853/3854/286887
SwissProt ID	P02538/P04259/P48668.

Application

Dilution Ratio	WB: 1:500-1:1000 IHC: 1:50-1:100 IF: 1:50-1:200
Molecular Weight	Calculated MW: 60 kDa; Observed MW: 56-60 kDa

Product Name: Cytokeratin 6 (1A5) Mouse Monoclonal Antibody
Catalog #: AMM00865



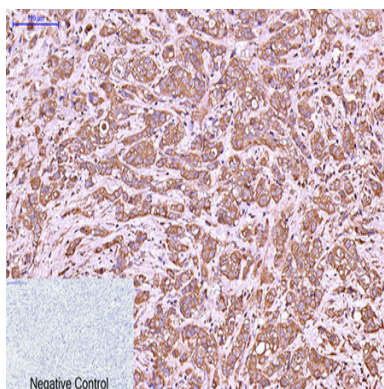
Background

There are at least six isoforms of human type II keratin-6 (K6). There are two types of cytoskeletal and microfibrillar keratin, I (acidic) and II (neutral to basic) (40-55 and 56-70 kDa, respectively).

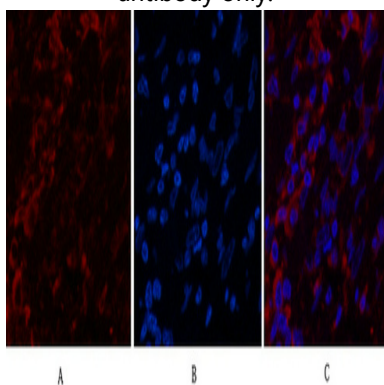
Research Area

Signal Transduction

Image Data

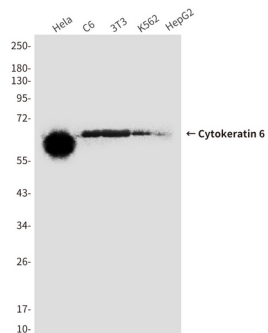


Immunohistochemistry analysis of paraffin-embedded Human breastcancer tissue using Cytokeratin 6 (1A5) antibody.High-pressure and temperature Sodium Citrate pH 6.0 was used for antigen retrieval.Negative control was used by secondary antibody only.



Immunofluorescence analysis of Cytokeratin 6 (1A5) in Human breastcancer tissue using Cytokeratin 6 (1A5) antibody(red),and DAPI (blue).

Product Name: Cytokeratin 6 (1A5) Mouse Monoclonal Antibody
Catalog #: AMM00865



Western blot analysis of Cytokeratin 6 (1A5) in HeLa, C6, 3T3, K562, HepG2 lysates using Cytokeratin 6 (1A5) antibody

Note

For research use only.