

Product Name: PHC1 (8G5) Mouse Monoclonal Antibody**Catalog #: AMM00854**

For research use only.

Summary

Description	Mouse monoclonal Antibody
Host	Mouse
Application	FC
Reactivity	Human
Conjugation	Unconjugated
Modification	Unmodified
Isotype	IgG1
Clonality	Monoclonal
Form	Liquid
Concentration	1mg/ml
Storage	Aliquot and store at -20°C (valid for 12 months). Avoid freeze/thaw cycles.
Shipping	Ice bags
Buffer	Liquid in PBS containing 50% glycerol, 0.5% protective protein and 0.02% sodium azide, pH 7.3.
Purification	Affinity Purification

Application

Dilution Ratio	FC 1:50-1:200
Molecular Weight	-

Antigen Information

Gene Name	PHC1
Alternative Names	EDR1; HPH1; RAE28
Gene ID	1911
SwissProt ID	P78364
Immunogen	

Background

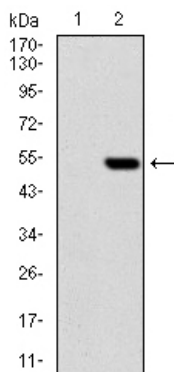
This gene is a homolog of the Drosophila polyhomeotic gene, which is a member of the Polycomb group of genes. The gene product is a component of a multimeric protein complex that contains EDR2 and the vertebrate Polycomb protein BMH1. The

gene product, the EDR2 protein, and the *Drosophila* polyhomeotic protein share 2 highly conserved domains, named homology domains I and II. These domains are involved in protein-protein interactions and may mediate heterodimerization of the protein encoded by this gene and the EDR2 protein.

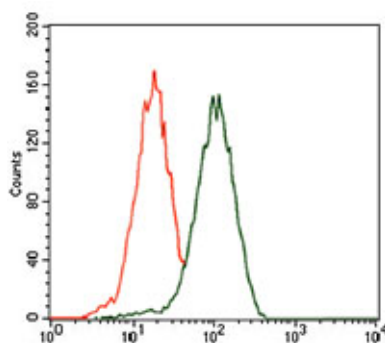
Research Area

Epigenetics and Nuclear Signaling

Image Data



Western blot analysis of HEK293 (1) and PHC1 (AA: 7581004)hlgGfC transfected HEK293 (2) lysates using PHC1 antibody.



Flow cytometry analysis of HEK293 stained with PHC1 antibody (green) and negative control (red).