
Product Name: S6K1 (3A2) Mouse Monoclonal Antibody**Catalog #: AMM00783**

For research use only.

Summary

| | |
|----------------------|--|
| Description | Mouse monoclonal Antibody |
| Host | Mouse |
| Application | IHC |
| Reactivity | Human,Rat,Mouse |
| Conjugation | Unconjugated |
| Modification | Unmodified |
| Isotype | IgG1 |
| Clonality | Monoclonal |
| Form | Liquid |
| Concentration | 1mg/ml |
| Storage | Aliquot and store at -20°C (valid for 12 months). Avoid freeze/thaw cycles. |
| Shipping | Ice bags |
| Buffer | Liquid in PBS containing 50% glycerol, 0.5% protective protein and 0.02% sodium azide, pH 7.3. |
| Purification | Affinity Purification |

Application

| | |
|-------------------------|----------------|
| Dilution Ratio | IHC 1:50-1:100 |
| Molecular Weight | - |

Antigen Information

| | |
|--------------------------|--|
| Gene Name | RPS6KB1 |
| Alternative Names | RPS6KB1; STK14A; Ribosomal protein S6 kinase beta-1; S6K-beta-1; S6K1; 70 kDa ribosomal protein S6 kinase 1; P70S6K1; p70-S6K 1; Ribosomal protein S6 kinase I; Serine/threonine-protein kinase 14A; p70 ribosomal S6 kinase alpha; p70 S6 kinas |
| Gene ID | 6198 |
| SwissProt ID | P23443 |
| Immunogen | A synthetic peptide of human S6K1 |

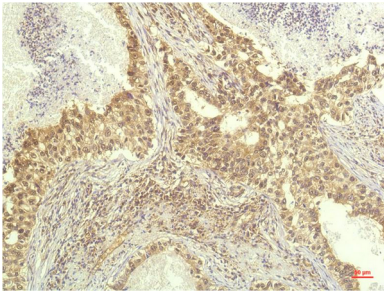
Background

This gene encodes a member of the RSK (ribosomal S6 kinase) family of serine/threonine kinases. This kinase contains 2 non-identical kinase catalytic domains and phosphorylates several residues of the S6 ribosomal protein.

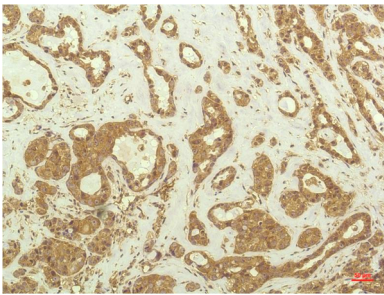
Research Area

Cell Biology

Image Data



Immunohistochemistry analysis of paraffin-embedded Human Lung Carcinoma Tissue using S6K1 (3A2) antibody. High-pressure and temperature Sodium Citrate pH 6.0 was used for antigen retrieval.



Immunohistochemical analysis of paraffin-embedded Human tonsils using S6K1 (3A2) antibody. High-pressure and temperature Sodium Citrate pH 6.0 was used for antigen retrieval.