
Product Name: Cyclin B1 (1B3) Mouse Monoclonal Antibody**Catalog #: AMM00754**

For research use only.

Summary

Description	Mouse monoclonal Antibody
Host	Mouse
Application	IHC
Reactivity	Human,Rat,Mouse
Conjugation	Unconjugated
Modification	Unmodified
Isotype	IgG
Clonality	Monoclonal
Form	Liquid
Concentration	1mg/ml
Storage	Aliquot and store at -20°C (valid for 12 months). Avoid freeze/thaw cycles.
Shipping	Ice bags
Buffer	Liquid in PBS containing 50% glycerol, 0.5% protective protein and 0.02% sodium azide, pH 7.3.
Purification	Affinity Purification

Application

Dilution Ratio	IHC 1:50-1:100
Molecular Weight	-

Antigen Information

Gene Name	CCNB1
Alternative Names	CCNB1; CCNB; G2/mitotic-specific cyclin-B1
Gene ID	891
SwissProt ID	P14635
Immunogen	A synthetic peptide corresponding to target protein

Background

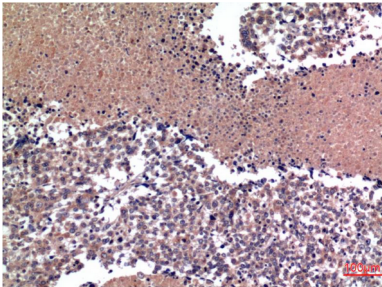
Essential for the control of the cell cycle at the G2/M (mitosis) transition. a member of the highly conserved cyclin family, whose members are characterized by a dramatic periodicity in protein abundance through the cell cycle. Cyclins function as regulators

of CDK kinases.

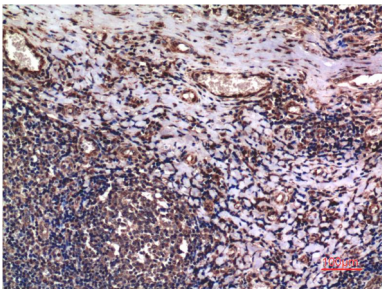
Research Area

Cell Biology

Image Data



Immunohistochemistry analysis of paraffin-embedded Human Lung Carcinoma Tissue using Cyclin B1 (1B3) antibody. High-pressure and temperature Sodium Citrate pH 6.0 was used for antigen retrieval.



Immunohistochemical analysis of paraffin-embedded Human tonsils using Cyclin B1 (1B3) antibody. High-pressure and temperature Sodium Citrate pH 6.0 was used for antigen retrieval.