

Product Name: gamma Tubulin (9B5) Mouse Monoclonal Antibody**Catalog #:** AMM00749

For research use only.

Summary

| | |
|----------------------|--|
| Description | Mouse monoclonal Antibody |
| Host | Mouse |
| Application | IHC |
| Reactivity | Human |
| Conjugation | Unconjugated |
| Modification | Unmodified |
| Isotype | IgG1 |
| Clonality | Monoclonal |
| Form | Liquid |
| Concentration | 1mg/ml |
| Storage | Aliquot and store at -20°C (valid for 12 months). Avoid freeze/thaw cycles. |
| Shipping | Ice bags |
| Buffer | Liquid in PBS containing 50% glycerol, 0.5% protective protein and 0.02% sodium azide, pH 7.3. |
| Purification | Affinity Purification |

Application

| | |
|-------------------------|----------------|
| Dilution Ratio | IHC 1:50-1:100 |
| Molecular Weight | - |

Antigen Information

| | |
|--------------------------|---|
| Gene Name | TUBG1 |
| Alternative Names | TUBG1; TUBG; Tubulin gamma-1 chain; Gamma-1-tubulin; Gamma-tubulin complex component 1; GCP-1 |
| Gene ID | 7283 |
| SwissProt ID | P23258 |
| Immunogen | A synthetic peptide of human gamma Tubulin |

Background

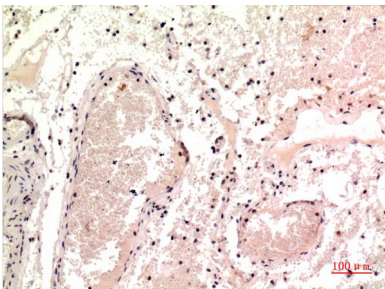
TUBG1 Tubulin is the major constituent of microtubules. Gamma tubulin is found at microtubule organizing centers (MTOC)

such as the spindle poles or the centrosome. Pericentriolar matrix component that regulates alpha/beta tubulin minus-end nucleation, centrosome duplication and spindle formation. Interacts with GCP2 and GCP3. Interacts with B9D2. Interacts with CDK5RAP2;

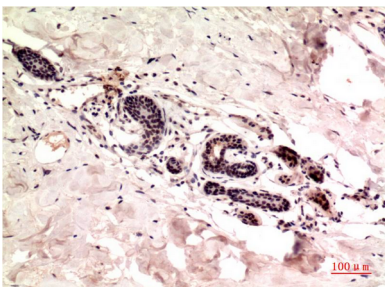
Research Area

Signal Transduction

Image Data



Immunohistochemistry analysis of paraffin-embedded Human Colon Carcinoma Tissue using gamma Tubulin (9B5) antibody. High-pressure and temperature Sodium Citrate pH 6.0 was used for antigen retrieval.



Immunohistochemical analysis of paraffin-embedded Human tonsils using gamma Tubulin (9B5) antibody. High-pressure and temperature Sodium Citrate pH 6.0 was used for antigen retrieval.