

Product Name: CD1a (4C3) Mouse Monoclonal Antibody**Catalog #: AMM00729**

For research use only.

Summary

Description	Mouse monoclonal Antibody
Host	Mouse
Application	IHC
Reactivity	Human,Rat,Mouse
Conjugation	Unconjugated
Modification	Unmodified
Isotype	IgG1
Clonality	Monoclonal
Form	Liquid
Concentration	1mg/ml
Storage	Aliquot and store at -20°C (valid for 12 months). Avoid freeze/thaw cycles.
Shipping	Ice bags
Buffer	Liquid in PBS containing 50% glycerol, 0.5% protective protein and 0.02% sodium azide, pH 7.3.
Purification	Affinity Purification

Application

Dilution Ratio	IHC 1:50-1:100
Molecular Weight	-

Antigen Information

Gene Name	CD1A
Alternative Names	CD1A; T-cell surface glycoprotein CD1a; T-cell surface antigen T6/Leu-6; hTa1 thymocyte antigen; CD antigen CD1a
Gene ID	909
SwissProt ID	P06126
Immunogen	Synthetic Peptide of CD1

Background

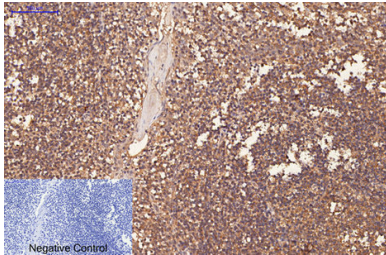
Antigen-presenting protein that binds self and non-self lipid and glycolipid antigens and presents them to T-cell receptors on

natural killer T-cells.

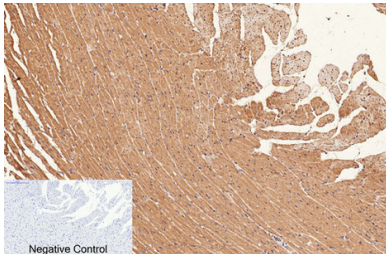
Research Area

Immunology

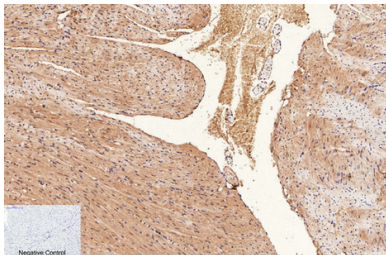
Image Data



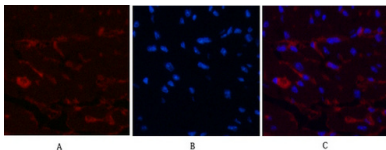
Immunohistochemistry analysis of paraffin-embedded Human Tonsil tissue using CD1a (4C3) antibody. High-pressure and temperature Sodium Citrate pH 6.0 was used for antigen retrieval. Negative control was used by secondary antibody only.



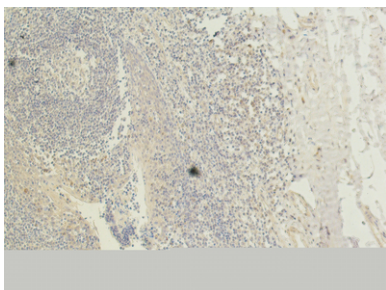
Immunohistochemical analysis of paraffin-embedded Human tonsils using CD1a (4C3) antibody. High-pressure and temperature Sodium Citrate pH 6.0 was used for antigen retrieval. Negative control was used by secondary antibody only.



Immunohistochemistry analysis of paraffin-embedded mouse heart tissue using CD1a antibody. High-pressure and temperature Sodium Citrate pH 6.0 was used for antigen retrieval. Negative control was used by secondary antibody only.



Immunofluorescence analysis of CD1a (4C3) in mouse heart tissue using CD1a (4C3) antibody (9H6) (red), and DAPI (blue).



Immunohistochemistry analysis of paraffin-embedded Human tonsils using CD1a (4C3) antibody. High-pressure and temperature Sodium Citrate pH 6.0 was used for antigen retrieval.