

Product Name: KIF7 (2A7) Mouse Monoclonal Antibody**Catalog #: AMM00724**

For research use only.

Summary

Description	Mouse monoclonal Antibody
Host	Mouse
Application	IHC, ICC/IF
Reactivity	Human, Mouse, Rat
Conjugation	Unconjugated
Modification	Unmodified
Isotype	IgG1
Clonality	Monoclonal
Form	Liquid
Concentration	1mg/ml
Storage	Aliquot and store at -20°C (valid for 12 months). Avoid freeze/thaw cycles.
Shipping	Ice bags
Buffer	Liquid in PBS containing 50% glycerol, 0.5% protective protein and 0.02% sodium azide, pH 7.3.
Purification	Affinity Purification

Application

Dilution Ratio	IHC 1:50-1:100, ICC/IF 1:50-1:200
Molecular Weight	-

Antigen Information

Gene Name	KIF7
Alternative Names	kinesin like protein KIF7; EQYK340; kif7
Gene ID	374654
SwissProt ID	Q2M1P5
Immunogen	Synthetic Peptide of Kif 7

Background

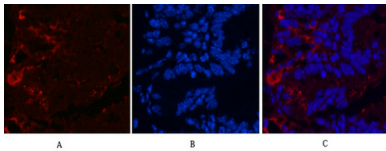
Essential for hedgehog signaling regulation: acts as both a negative and positive regulator of sonic hedgehog (Shh) and Indian hedgehog (Ihh) pathways, acting downstream of SMO, through both SUFU-dependent and -independent mechanisms

(PubMed:21633164). Involved in the regulation of microtubular dynamics. Required for proper organization of the ciliary tip and control of ciliary localization of SUFU-GLI2 complexes . Required for localization of GLI3 to cilia in response to Shh. Negatively regulates Shh signaling by preventing inappropriate activation of the transcriptional activator GLI2 in the absence of ligand. Positively regulates Shh signaling by preventing the processing of the transcription factor GLI3 into its repressor form. In keratinocytes, promotes the dissociation of SUFU-GLI2 complexes, GLI2 nuclear translocation and Shh signaling activation . Involved in the regulation of epidermal differentiation and chondrocyte development .

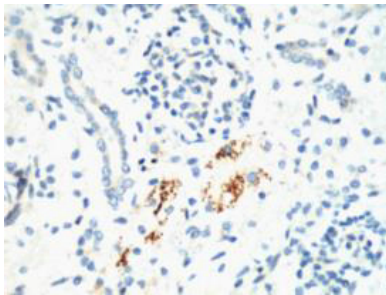
Research Area

Signal Transduction

Image Data



Immunofluorescence analysis of KIF7 (2A7) in mouse colon using KIF7 (2A7) antibody (red), and DAPI (blue).



Immunohistochemistry analysis of paraffin-embedded mouse kidney tissue using KIF7 (2A7) antibody. High-pressure and temperature Sodium Citrate pH 6.0 was used for antigen retrieval.