

**Product Name: CD21 (3B1) Mouse Monoclonal Antibody****Catalog #: AMM00723**

For research use only.

**Summary**

<b>Description</b>	Mouse monoclonal Antibody
<b>Host</b>	Mouse
<b>Application</b>	IHC, ICC/IF
<b>Reactivity</b>	Human, Mouse, Rat
<b>Conjugation</b>	Unconjugated
<b>Modification</b>	Unmodified
<b>Isotype</b>	IgG1
<b>Clonality</b>	Monoclonal
<b>Form</b>	Liquid
<b>Concentration</b>	1mg/ml
<b>Storage</b>	Aliquot and store at -20°C (valid for 12 months). Avoid freeze/thaw cycles.
<b>Shipping</b>	Ice bags
<b>Buffer</b>	Liquid in PBS containing 50% glycerol, 0.5% protective protein and 0.02% sodium azide, pH 7.3.
<b>Purification</b>	Affinity Purification

**Application**

<b>Dilution Ratio</b>	IHC 1:50-1:100, ICC/IF 1:50-1:200
<b>Molecular Weight</b>	-

**Antigen Information**

<b>Gene Name</b>	CR2
<b>Alternative Names</b>	CR2; C3DR; Complement receptor type 2; Cr2; Complement C3d receptor; Epstein-Barr virus receptor; EBV receptor; CD21
<b>Gene ID</b>	1380
<b>SwissProt ID</b>	P20023
<b>Immunogen</b>	Synthetic Peptide of CD21

**Background**

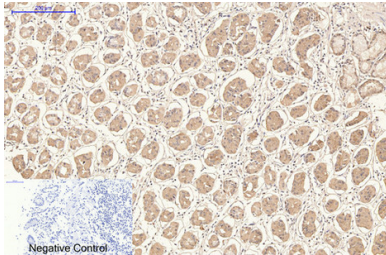
Receptor for complement C3Dd, for the Epstein-Barr virus on human B-cells and T-cells and for HNRPU. Participates in B

lymphocytes activation. (Microbial infection) Acts as a receptor for Epstein-Barr virus.

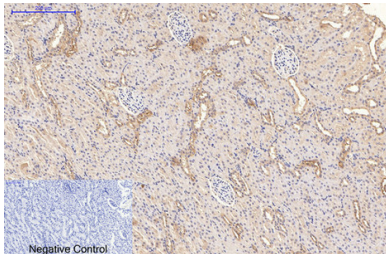
## Research Area

Immunology

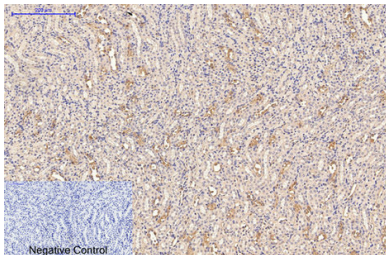
## Image Data



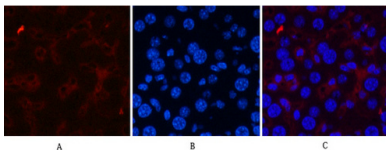
Immunohistochemistry analysis of paraffin-embedded Human stomach tissue using CD21 (3B1) antibody. High-pressure and temperature Sodium Citrate pH 6.0 was used for antigen retrieval. Negative control was used by secondary antibody only.



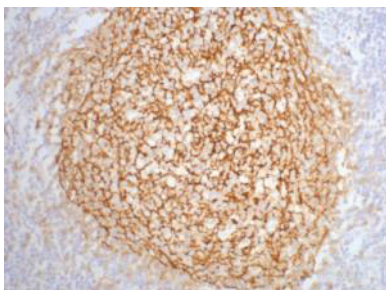
Immunohistochemical analysis of paraffin-embedded Human tonsils using CD21 (3B1) antibody. High-pressure and temperature Sodium Citrate pH 6.0 was used for antigen retrieval. Negative control was used by secondary antibody only.



Immunohistochemistry analysis of paraffin-embedded mouse kidney tissue using CD21 antibody. High-pressure and temperature Sodium Citrate pH 6.0 was used for antigen retrieval. Negative control was used by secondary antibody only.



Immunofluorescence analysis of CD21 (3B1) in mouse liver tissue using CD21 (3B1) antibody (2C5) (red), and DAPI (blue).



Immunohistochemistry analysis of paraffin-embedded Human tonsil tissue using CD21 (3B1) antibody. High-pressure and temperature Sodium Citrate pH 6.0 was used for antigen retrieval.