

**Product Name: ERK1/2 (1B4) Mouse Monoclonal Antibody****Catalog #: AMM00660**

For research use only.

**Summary**

<b>Description</b>	Mouse monoclonal Antibody
<b>Host</b>	Mouse
<b>Application</b>	WB,IHC
<b>Reactivity</b>	Human,Rat,Mouse
<b>Conjugation</b>	Unconjugated
<b>Modification</b>	Unmodified
<b>Isotype</b>	IgG1
<b>Clonality</b>	Monoclonal
<b>Form</b>	Liquid
<b>Concentration</b>	1mg/ml
<b>Storage</b>	Aliquot and store at -20°C (valid for 12 months). Avoid freeze/thaw cycles.
<b>Shipping</b>	Ice bags
<b>Buffer</b>	Liquid in PBS containing 50% glycerol, 0.5% protective protein and 0.02% sodium azide, pH 7.3.
<b>Purification</b>	Affinity Purification

**Application**

<b>Dilution Ratio</b>	WB 1:500-1:1000,IHC 1:50-1:100
<b>Molecular Weight</b>	Calculated MW: 44,42 kDa; Observed MW: 44,42 kDa

**Antigen Information**

<b>Gene Name</b>	MAPK3/MAPK1
<b>Alternative Names</b>	MAPK3; ERK1; ERT2; ERK-1; PRKM3; P44ERK1; P44MAPK; HS44KDAP; HUMKER1A; p44-ERK1; p44-MAPK; MAPK1; ERK; p38; p40; p41; ERK2; ERT1; ERK-2; MAPK2; PRKM1; PRKM2; P42MAPK; p41mapk; p42-MAPK.
<b>Gene ID</b>	5595/5594
<b>SwissProt ID</b>	P27361/P28482
<b>Immunogen</b>	

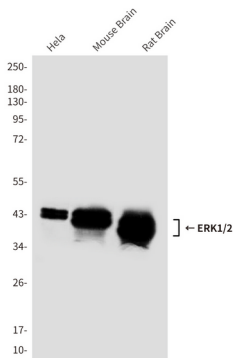
**Background**

Serine/threonine kinase which acts as an essential component of the MAP kinase signal transduction pathway. MAPK1/ERK2 and MAPK3/ERK1 are the 2 MAPKs which play an important role in the MAPK/ERK cascade. They participate also in a signaling cascade initiated by activated KIT and KITLG/SCF. Depending on the cellular context, the MAPK/ERK cascade mediates diverse biological functions such as cell growth, adhesion, survival and differentiation through the regulation of transcription, translation, cytoskeletal rearrangements.

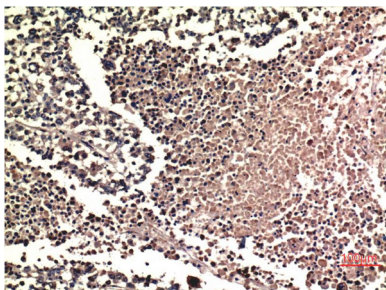
## Research Area

Cell Biology

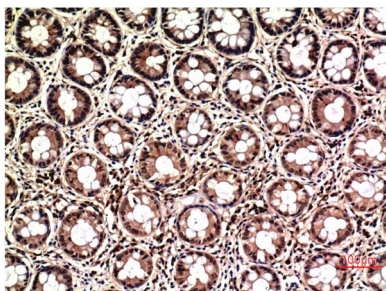
## Image Data



Western blot analysis of ERK1/2 (1B4) in Hela lysates, mouse Brain lysates, rat Brain lysates using ERK1/2 antibody.



Immunohistochemistry analysis of paraffin-embedded Human Lung Carcinoma Tissue using ERK1/2 antibody. High-pressure and temperature Sodium Citrate pH 6.0 was used for antigen retrieval.



Immunohistochemistry analysis of paraffin-embedded Human Colon Carcinoma Tissue using ERK1/2 antibody. High-pressure and temperature Sodium Citrate pH 6.0 was used for antigen retrieval.