

제품명: Brd4(2D15) 토끼 단클론 항체

카탈로그 번호: AMRe07650

연구용 전용

요약

설명	재조합 토끼 단클론 항체
숙주	토끼
적용	WB, IHC, ICC/IF, FC, IP
반응성	인간 쥐 생체
결합	비결합
변형	수정치 없음
아이소타입	IgG
클론성	단클론
형태	액체
농도	0.5mg/ml. 본 제품 농도는 제조 배치에 따라 다를 수 있습니다.
Storage	Aliquot 하여 -20°C 에 보관 (12 개월 유효). 냉동/해동 반복을 피하십시오.
Shipping	Ice bags
버퍼	토끼 IgG는 인산염 완충 용액 (pH 7.4, 150mM NaCl, 0.02% 산형 방부제 N 및 50% 글리세롤)에 용해되어 있습니다. 단클론 시 +4 $^{\circ}\text{C}$ 에서, 장기 보관 시 -20°C 에서 보관하십시오. 냉동/해동 과정을 반복하지 마십시오.
정제	천상 정제

적용

희석 비율	WB 1:500-1:2000, IHC 1:50-1:200, ICC/IF 1:100-1:200, FC 1:20-1:50, IP 1:20-1:50
분자량	152kDa

항원 정보

유전자명	BRD4
다른 이름	Brd4; CAP; HUNK1; MCAP; Bromodomain containing 4; chromosome associated protein;
유전자 ID	23476.0
SwissProt ID	O60885
면역원	인간 Brd4의 항원 펩타이드

배경

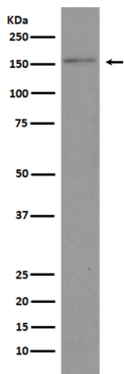
브로모도메인 함유 단백질 4 (BRD4)는 브로모도메인 및 액티빈 1 (BET) 단백질 계열에 속하며, 계열은 BRD2, BRD3, BRD4, BRD5, BRD6, BRD7, BRD8, BRD9, BRD10, BRD11, BRD12, BRD13, BRD14, BRD15, BRD16, BRD17, BRD18, BRD19, BRD20, BRD21, BRD22, BRD23, BRD24, BRD25, BRD26, BRD27, BRD28, BRD29, BRD30, BRD31, BRD32, BRD33, BRD34, BRD35, BRD36, BRD37, BRD38, BRD39, BRD40, BRD41, BRD42, BRD43, BRD44, BRD45, BRD46, BRD47, BRD48, BRD49, BRD50, BRD51, BRD52, BRD53, BRD54, BRD55, BRD56, BRD57, BRD58, BRD59, BRD60, BRD61, BRD62, BRD63, BRD64, BRD65, BRD66, BRD67, BRD68, BRD69, BRD70, BRD71, BRD72, BRD73, BRD74, BRD75, BRD76, BRD77, BRD78, BRD79, BRD80, BRD81, BRD82, BRD83, BRD84, BRD85, BRD86, BRD87, BRD88, BRD89, BRD90, BRD91, BRD92, BRD93, BRD94, BRD95, BRD96, BRD97, BRD98, BRD99, BRD100, BRD101, BRD102, BRD103, BRD104, BRD105, BRD106, BRD107, BRD108, BRD109, BRD110, BRD111, BRD112, BRD113, BRD114, BRD115, BRD116, BRD117, BRD118, BRD119, BRD120, BRD121, BRD122, BRD123, BRD124, BRD125, BRD126, BRD127, BRD128, BRD129, BRD130, BRD131, BRD132, BRD133, BRD134, BRD135, BRD136, BRD137, BRD138, BRD139, BRD140, BRD141, BRD142, BRD143, BRD144, BRD145, BRD146, BRD147, BRD148, BRD149, BRD150, BRD151, BRD152, BRD153, BRD154, BRD155, BRD156, BRD157, BRD158, BRD159, BRD160, BRD161, BRD162, BRD163, BRD164, BRD165, BRD166, BRD167, BRD168, BRD169, BRD170, BRD171, BRD172, BRD173, BRD174, BRD175, BRD176, BRD177, BRD178, BRD179, BRD180, BRD181, BRD182, BRD183, BRD184, BRD185, BRD186, BRD187, BRD188, BRD189, BRD190, BRD191, BRD192, BRD193, BRD194, BRD195, BRD196, BRD197, BRD198, BRD199, BRD200, BRD201, BRD202, BRD203, BRD204, BRD205, BRD206, BRD207, BRD208, BRD209, BRD210, BRD211, BRD212, BRD213, BRD214, BRD215, BRD216, BRD217, BRD218, BRD219, BRD220, BRD221, BRD222, BRD223, BRD224, BRD225, BRD226, BRD227, BRD228, BRD229, BRD230, BRD231, BRD232, BRD233, BRD234, BRD235, BRD236, BRD237, BRD238, BRD239, BRD240, BRD241, BRD242, BRD243, BRD244, BRD245, BRD246, BRD247, BRD248, BRD249, BRD250, BRD251, BRD252, BRD253, BRD254, BRD255, BRD256, BRD257, BRD258, BRD259, BRD260, BRD261, BRD262, BRD263, BRD264, BRD265, BRD266, BRD267, BRD268, BRD269, BRD270, BRD271, BRD272, BRD273, BRD274, BRD275, BRD276, BRD277, BRD278, BRD279, BRD280, BRD281, BRD282, BRD283, BRD284, BRD285, BRD286, BRD287, BRD288, BRD289, BRD290, BRD291, BRD292, BRD293, BRD294, BRD295, BRD296, BRD297, BRD298, BRD299, BRD300, BRD301, BRD302, BRD303, BRD304, BRD305, BRD306, BRD307, BRD308, BRD309, BRD310, BRD311, BRD312, BRD313, BRD314, BRD315, BRD316, BRD317, BRD318, BRD319, BRD320, BRD321, BRD322, BRD323, BRD324, BRD325, BRD326, BRD327, BRD328, BRD329, BRD330, BRD331, BRD332, BRD333, BRD334, BRD335, BRD336, BRD337, BRD338, BRD339, BRD340, BRD341, BRD342, BRD343, BRD344, BRD345, BRD346, BRD347, BRD348, BRD349, BRD350, BRD351, BRD352, BRD353, BRD354, BRD355, BRD356, BRD357, BRD358, BRD359, BRD360, BRD361, BRD362, BRD363, BRD364, BRD365, BRD366, BRD367, BRD368, BRD369, BRD370, BRD371, BRD372, BRD373, BRD374, BRD375, BRD376, BRD377, BRD378, BRD379, BRD380, BRD381, BRD382, BRD383, BRD384, BRD385, BRD386, BRD387, BRD388, BRD389, BRD390, BRD391, BRD392, BRD393, BRD394, BRD395, BRD396, BRD397, BRD398, BRD399, BRD400, BRD401, BRD402, BRD403, BRD404, BRD405, BRD406, BRD407, BRD408, BRD409, BRD410, BRD411, BRD412, BRD413, BRD414, BRD415, BRD416, BRD417, BRD418, BRD419, BRD420, BRD421, BRD422, BRD423, BRD424, BRD425, BRD426, BRD427, BRD428, BRD429, BRD430, BRD431, BRD432, BRD433, BRD434, BRD435, BRD436, BRD437, BRD438, BRD439, BRD440, BRD441, BRD442, BRD443, BRD444, BRD445, BRD446, BRD447, BRD448, BRD449, BRD450, BRD451, BRD452, BRD453, BRD454, BRD455, BRD456, BRD457, BRD458, BRD459, BRD460, BRD461, BRD462, BRD463, BRD464, BRD465, BRD466, BRD467, BRD468, BRD469, BRD470, BRD471, BRD472, BRD473, BRD474, BRD475, BRD476, BRD477, BRD478, BRD479, BRD480, BRD481, BRD482, BRD483, BRD484, BRD485, BRD486, BRD487, BRD488, BRD489, BRD490, BRD491, BRD492, BRD493, BRD494, BRD495, BRD496, BRD497, BRD498, BRD499, BRD500, BRD501, BRD502, BRD503, BRD504, BRD505, BRD506, BRD507, BRD508, BRD509, BRD510, BRD511, BRD512, BRD513, BRD514, BRD515, BRD516, BRD517, BRD518, BRD519, BRD520, BRD521, BRD522, BRD523, BRD524, BRD525, BRD526, BRD527, BRD528, BRD529, BRD530, BRD531, BRD532, BRD533, BRD534, BRD535, BRD536, BRD537, BRD538, BRD539, BRD540, BRD541, BRD542, BRD543, BRD544, BRD545, BRD546, BRD547, BRD548, BRD549, BRD550, BRD551, BRD552, BRD553, BRD554, BRD555, BRD556, BRD557, BRD558, BRD559, BRD560, BRD561, BRD562, BRD563, BRD564, BRD565, BRD566, BRD567, BRD568, BRD569, BRD570, BRD571, BRD572, BRD573, BRD574, BRD575, BRD576, BRD577, BRD578, BRD579, BRD580, BRD581, BRD582, BRD583, BRD584, BRD585, BRD586, BRD587, BRD588, BRD589, BRD590, BRD591, BRD592, BRD593, BRD594, BRD595, BRD596, BRD597, BRD598, BRD599, BRD600, BRD601, BRD602, BRD603, BRD604, BRD605, BRD606, BRD607, BRD608, BRD609, BRD610, BRD611, BRD612, BRD613, BRD614, BRD615, BRD616, BRD617, BRD618, BRD619, BRD620, BRD621, BRD622, BRD623, BRD624, BRD625, BRD626, BRD627, BRD628, BRD629, BRD630, BRD631, BRD632, BRD633, BRD634, BRD635, BRD636, BRD637, BRD638, BRD639, BRD640, BRD641, BRD642, BRD643, BRD644, BRD645, BRD646, BRD647, BRD648, BRD649, BRD650, BRD651, BRD652, BRD653, BRD654, BRD655, BRD656, BRD657, BRD658, BRD659, BRD660, BRD661, BRD662, BRD663, BRD664, BRD665, BRD666, BRD667, BRD668, BRD669, BRD670, BRD671, BRD672, BRD673, BRD674, BRD675, BRD676, BRD677, BRD678, BRD679, BRD680, BRD681, BRD682, BRD683, BRD684, BRD685, BRD686, BRD687, BRD688, BRD689, BRD690, BRD691, BRD692, BRD693, BRD694, BRD695, BRD696, BRD697, BRD698, BRD699, BRD700, BRD701, BRD702, BRD703, BRD704, BRD705, BRD706, BRD707, BRD708, BRD709, BRD710, BRD711, BRD712, BRD713, BRD714, BRD715, BRD716, BRD717, BRD718, BRD719, BRD720, BRD721, BRD722, BRD723, BRD724, BRD725, BRD726, BRD727, BRD728, BRD729, BRD730, BRD731, BRD732, BRD733, BRD734, BRD735, BRD736, BRD737, BRD738, BRD739, BRD740, BRD741, BRD742, BRD743, BRD744, BRD745, BRD746, BRD747, BRD748, BRD749, BRD750, BRD751, BRD752, BRD753, BRD754, BRD755, BRD756, BRD757, BRD758, BRD759, BRD760, BRD761, BRD762, BRD763, BRD764, BRD765, BRD766, BRD767, BRD768, BRD769, BRD770, BRD771, BRD772, BRD773, BRD774, BRD775, BRD776, BRD777, BRD778, BRD779, BRD780, BRD781, BRD782, BRD783, BRD784, BRD785, BRD786, BRD787, BRD788, BRD789, BRD790, BRD791, BRD792, BRD793, BRD794, BRD795, BRD796, BRD797, BRD798, BRD799, BRD800, BRD801, BRD802, BRD803, BRD804, BRD805, BRD806, BRD807, BRD808, BRD809, BRD810, BRD811, BRD812, BRD813, BRD814, BRD815, BRD816, BRD817, BRD818, BRD819, BRD820, BRD821, BRD822, BRD823, BRD824, BRD825, BRD826, BRD827, BRD828, BRD829, BRD830, BRD831, BRD832, BRD833, BRD834, BRD835, BRD836, BRD837, BRD838, BRD839, BRD840, BRD841, BRD842, BRD843, BRD844, BRD845, BRD846, BRD847, BRD848, BRD849, BRD850, BRD851, BRD852, BRD853, BRD854, BRD855, BRD856, BRD857, BRD858, BRD859, BRD860, BRD861, BRD862, BRD863, BRD864, BRD865, BRD866, BRD867, BRD868, BRD869, BRD870, BRD871, BRD872, BRD873, BRD874, BRD875, BRD876, BRD877, BRD878, BRD879, BRD880, BRD881, BRD882, BRD883, BRD884, BRD885, BRD886, BRD887, BRD888, BRD889, BRD890, BRD891, BRD892, BRD893, BRD894, BRD895, BRD896, BRD897, BRD898, BRD899, BRD900, BRD901, BRD902, BRD903, BRD904, BRD905, BRD906, BRD907, BRD908, BRD909, BRD910, BRD911, BRD912, BRD913, BRD914, BRD915, BRD916, BRD917, BRD918, BRD919, BRD920, BRD921, BRD922, BRD923, BRD924, BRD925, BRD926, BRD927, BRD928, BRD929, BRD930, BRD931, BRD932, BRD933, BRD934, BRD935, BRD936, BRD937, BRD938, BRD939, BRD940, BRD941, BRD942, BRD943, BRD944, BRD945, BRD946, BRD947, BRD948, BRD949, BRD950, BRD951, BRD952, BRD953, BRD954, BRD955, BRD956, BRD957, BRD958, BRD959, BRD960, BRD961, BRD962, BRD963, BRD964, BRD965, BRD966, BRD967, BRD968, BRD969, BRD970, BRD971, BRD972, BRD973, BRD974, BRD975, BRD976, BRD977, BRD978, BRD979, BRD980, BRD981, BRD982, BRD983, BRD984, BRD985, BRD986, BRD987, BRD988, BRD989, BRD990, BRD991, BRD992, BRD993, BRD994, BRD995, BRD996, BRD997, BRD998, BRD999, BRD1000, BRD1001, BRD1002, BRD1003, BRD1004, BRD1005, BRD1006, BRD1007, BRD1008, BRD1009, BRD1010, BRD1011, BRD1012, BRD1013, BRD1014, BRD1015, BRD1016, BRD1017, BRD1018, BRD1019, BRD1020, BRD1021, BRD1022, BRD1023, BRD1024, BRD1025, BRD1026, BRD1027, BRD1028, BRD1029, BRD1030, BRD1031, BRD1032, BRD1033, BRD1034, BRD1035, BRD1036, BRD1037, BRD1038, BRD1039, BRD1040, BRD1041, BRD1042, BRD1043, BRD1044, BRD1045, BRD1046, BRD1047, BRD1048, BRD1049, BRD1050, BRD1051, BRD1052, BRD1053, BRD1054, BRD1055, BRD1056, BRD1057, BRD1058, BRD1059, BRD1060, BRD1061, BRD1062, BRD1063, BRD1064, BRD1065, BRD1066, BRD1067, BRD1068, BRD1069, BRD1070, BRD1071, BRD1072, BRD1073, BRD1074, BRD1075, BRD1076, BRD1077, BRD1078, BRD1079, BRD1080, BRD1081, BRD1082, BRD1083, BRD1084, BRD1085, BRD1086, BRD1087, BRD1088, BRD1089, BRD1090, BRD1091, BRD1092, BRD1093, BRD1094, BRD1095, BRD1096, BRD1097, BRD1098, BRD1099, BRD1100, BRD1101, BRD1102, BRD1103, BRD1104, BRD1105, BRD1106, BRD1107, BRD1108, BRD1109, BRD1110, BRD1111, BRD1112, BRD1113, BRD1114, BRD1115, BRD1116, BRD1117, BRD1118, BRD1119, BRD1120, BRD1121, BRD1122, BRD1123, BRD1124, BRD1125, BRD1126, BRD1127, BRD1128, BRD1129, BRD1130, BRD1131, BRD1132, BRD1133, BRD1134, BRD1135, BRD1136, BRD1137, BRD1138, BRD1139, BRD1140, BRD1141, BRD1142, BRD1143, BRD1144, BRD1145, BRD1146, BRD1147, BRD1148, BRD1149, BRD1150, BRD1151, BRD1152, BRD1153, BRD1154, BRD1155, BRD1156, BRD1157, BRD1158, BRD1159, BRD1160, BRD1161, BRD1162, BRD1163, BRD1164, BRD1165, BRD1166, BRD1167, BRD1168, BRD1169, BRD1170, BRD1171, BRD1172, BRD1173, BRD1174, BRD1175, BRD1176, BRD1177, BRD1178, BRD1179, BRD1180, BRD1181, BRD1182, BRD1183, BRD1184, BRD1185, BRD1186, BRD1187, BRD1188, BRD1189, BRD1190, BRD1191, BRD1192, BRD1193, BRD1194, BRD1195, BRD1196, BRD1197, BRD1198, BRD1199, BRD1200, BRD1201, BRD1202, BRD1203, BRD1204, BRD1205, BRD1206, BRD1207, BRD1208, BRD1209, BRD1210, BRD1211, BRD1212, BRD1213, BRD1214, BRD1215, BRD1216, BRD1217, BRD1218, BRD1219, BRD1220, BRD1221, BRD1222, BRD1223, BRD1224, BRD1225, BRD1226, BRD1227, BRD1228, BRD1229, BRD1230, BRD1231, BRD1232, BRD1233, BRD1234, BRD1235, BRD1236, BRD1237, BRD1238, BRD1239, BRD1240, BRD1241, BRD1242, BRD1243, BRD1244, BRD1245, BRD1246, BRD1247, BRD1248, BRD1249, BRD1250, BRD1251, BRD1252, BRD1253, BRD1254, BRD1255, BRD1256, BRD1257, BRD1258, BRD1259, BRD1260, BRD1261, BRD1262, BRD1263, BRD1264, BRD1265, BRD1266, BRD1267, BRD1268, BRD1269, BRD1270, BRD1271, BRD1272, BRD1273, BRD1274, BRD1275, BRD1276, BRD1277, BRD1278, BRD1279, BRD1280, BRD1281, BRD1282, BRD1283, BRD1284, BRD1285, BRD1286, BRD1287, BRD1288, BRD1289, BRD1290, BRD1291, BRD1292, BRD1293, BRD1294, BRD1295, BRD1296, BRD1297, BRD1298, BRD1299, BRD1300, BRD1301, BRD1302, BRD1303, BRD1304, BRD1305, BRD1306, BRD1307, BRD1308, BRD1309, BRD1310, BRD1311, BRD1312, BRD1313, BRD1314, BRD1315, BRD1316, BRD1317, BRD1318, BRD1319, BRD1320, BRD1321, BRD1322, BRD1323, BRD1324, BRD1325, BRD1326, BRD1327, BRD1328, BRD1329, BRD1330, BRD1331, BRD1332, BRD1333, BRD1334, BRD1335, BRD1336, BRD1337, BRD1338, BRD1339, BRD1340, BRD1341, BRD1342, BRD1343, BRD1344, BRD1345, BRD1346, BRD1347, BRD1348, BRD1349, BRD1350, BRD1351, BRD1352, BRD1353, BRD1354, BRD1355, BRD1356, BRD1357, BRD1358, BRD1359, BRD1360, BRD1361, BRD1362, BRD1363, BRD1364, BRD1365, BRD1366, BRD1367, BRD1368, BRD1369, BRD1370, BRD1371, BRD1372, BRD1373, BRD1374, BRD1375, BRD1376, BRD1377, BRD1378, BRD1379, BRD1380, BRD1381, BRD1382, BRD1383, BRD1384, BRD1385, BRD1386, BRD1387, BRD1388, BRD1389, BRD1390, BRD1391, BRD1392, BRD1393, BRD1394, BRD1395, BRD1396, BRD1397, BRD1398, BRD1399, BRD1400, BRD1401, BRD1402, BRD1403, BRD1404, BRD1405, BRD1406, BRD1407, BRD1408, BRD1409, BRD1410, BRD1411, BRD1412, BRD1413, BRD1414, BRD1415, BRD1416, BRD1417, BRD1418, BRD1419, BRD1420, BRD1421, BRD1422, BRD1423, BRD1424, BRD1425, BRD1426, BRD1427, BRD1428, BRD1429, BRD1430, BRD1431, BRD1432, BRD1433, BRD1434, BRD1435, BRD1436, BRD1437, BRD1438, BRD1439, BRD1440, BRD1441, BRD1442, BRD1443, BRD1444, BRD1445, BRD1446, BRD1447, BRD1448, BRD1449, BRD1450, BRD1451, BRD1452, BRD1453, BRD1454, BRD1455, BRD1456, BRD1457, BRD1458, BRD1459, BRD1460, BRD1461, BRD1462, BRD1463, BRD1464, BRD1465, BRD1466, BRD1467, BRD1468, BRD1469, BRD1470, BRD1471, BRD1472, BRD1473, BRD1474, BRD1475, BRD1476, BRD1477, BRD1478, BRD1479, BRD1480, BRD1481, BRD1482, BRD1483, BRD1484, BRD1485, BRD1486, BRD1487, BRD1488, BRD1489, BRD1490, BRD1491, BRD1492, BRD1493, BRD1494, BRD1495, BRD1496, BRD1497, BRD1498, BRD1499, BRD1500, BRD1501, BRD1502, BRD1503, BRD1504, BRD1505, BRD1506, BRD1507, BRD1508, BRD1509, BRD1510, BRD1511, BRD1512, BRD1513, BRD1514, BRD1515, BRD1516, BRD1517, BRD1518, BRD1519, BRD1520, BRD1521, BRD1522, BRD1523, BRD1524, BRD1525, BRD1526, BRD1527, BRD1528, BRD1529, BRD1530, BRD1531, BRD1532, BRD1533, BRD1534, BRD1535, BRD1536, BRD1537, BRD1538, BRD1539, BRD1540, BRD1541, BRD1542, BRD1543, BRD1544, BRD1545, BRD1546, BRD1547, BRD1548, BRD1549, BRD1550, BRD1551, BRD1552, BRD1553, BRD1554, BRD1555, BRD1556, BRD1557, BRD1558, BRD1559, BRD1560, BRD1561, BRD1562, BRD1563, BRD1564, BRD1565, BRD1566, BRD1567, BRD1568, BRD1569, BRD1570, BRD1571, BRD1572, BRD1573, BRD1574, BRD1575, BRD1576, BRD1577, BRD1578, BRD1579, BRD1580, BRD1581, BRD1582, BRD1583, BRD1584, BRD1585, BRD1586, BRD1587, BRD1588, BRD1589, BRD1590, BRD1591, BRD1592, BRD1593, BRD1594, BRD1595, BRD1596, BRD1597, BRD1598, BRD1599, BRD1600, BRD1601, BRD1602, BRD1603, BRD1604, BRD1605, BRD1606, BRD1607, BRD1608, BRD1609, BRD1610, BRD1611, BRD1612, BRD1613, BRD1614, BRD1615, BRD1616, BRD1617, BRD1618, BRD1619, BRD1620, BRD1621, BRD1622, BRD1623, BRD1624, BRD1625, BRD1626, BRD1627, BRD1628, BRD1629, BRD1630, BRD1631, BRD1632, BRD1633, BRD1634, BRD1635, BRD1636, BRD1637, BRD1638, BRD1639, BRD1640, BRD1641, BRD1642, BRD1643, BRD1644, BRD1645, BRD1646, BRD1647, BRD1648, BRD1649, BRD1650, BRD1651, BRD1652, BRD1653, BRD1654, BRD1655, BRD1656, BRD1657, BRD1658, BRD1659, BRD1660, BRD1661, BRD1662, BRD1663, BRD1664, BRD1665, BRD1666, BRD1667, BRD1668, BRD1669, BRD1670, BRD1671, BRD1672, BRD1673, BRD1674, BRD1675, BRD1676, BRD1677, BRD1678, BRD1679, BRD1680, BRD1681, BRD1682, BRD1683, BRD1684, BRD1685, BRD1686, BRD1687, BRD1688, BRD1689, BRD1690, BRD1691, BRD1692, BRD1693, BRD1694, BRD1695, BRD1696, BRD1697, BRD1698, BRD1699, BRD1700, BRD1701, BRD1702, BRD1703, BRD1704, BRD1705, BRD1706, BRD1707, BRD1708, BRD1709, BRD1710, BRD1711, BRD1712, BRD1713, BRD1714, BRD1715, BRD1716, BRD1717, BRD1718, BRD1719, BRD1720, BRD1721, BRD1722, BRD1723, BRD1724, BRD1725, BRD1726, BRD1727, BRD1728, BRD1729, BRD1730, BRD1731, BRD1732, BRD1733, BRD1734, BRD1735, BRD1736, BRD1737, BRD1738, BRD1739, BRD1740, BRD1741, BRD1742, BRD1743, BRD1744, BRD1745, BRD1746, BRD1747, BRD1748, BRD1749, BRD1750, BRD1751, BRD1752, BRD1753, BRD1754, BRD1755, BRD1756, BRD1757, BRD17

모태 단백질(ET) 도메인이 있으며 아세틸화 라잔에 결합한다. BRD4는 히스톤 H3의 Lys14 뿐만 아니라 히스톤 H4의 Lys5와 Lys12에 대한 상호작용을 보이는 크로틴 결합 단백질이다. BRD4의 크로틴 결합은 세포 주기 전에 걸쳐 일어나며 대부분의 유전자 침묵은 증진 유사 열역학에 나타난다. BRD4는 아세틸화 히스톤을 인식하고 결합하는 크로틴 라잔 단백질의 새로운 유형을 통해 유전자 발현 조절에 중요한 역할을 한다. 이 단백질은 세포 주기 전에 걸쳐 아세틸화 크로틴 결합 상태를 유지하며, 아세틸화 크로틴 상태를 보고하고 크로틴 구조를 유합시켜서 열후 G1기 유전자 전에 대한 유전자 발현을 증가시킨다 (PubMed:23589332, PubMed:23317504, PubMed:22334664). 간접적으로 P-TEFb 복합체와 결합하여 RNA 폴리머라아제 II의 유전자 발현을 조절하는 데 중요한 역할을 한다. 또한 MJD6와 결합하여 유전자 발현을 억제하고 불완전한 P-TEFb 복합체를 유한다. BRD4와 MJD6는 HEXIM1 및 SKsnRNA 복합체 같은 유전자 발현 조절을 P-TEFb에서 제거하여 전적으로 P-TEFb 복합체를 형성하는 데 필요하며 이를 통해 P-TEFb를 활성 형태로 전환시켜 RNA 중합효소의 C-말단 도메인(CTD)을 인산화시킬 수 있게 한다 (PubMed:23589332, PubMed:19596240, PubMed:16109377, PubMed:16109376, PubMed:24360279). 또한 RNA 중합효소의 C-말단 도메인(CTD)의 Ser-2' 인화를 촉진한다 (PubMed:23086925). 한보사이드에 따른 유전자 발현을 조절하기 위한 직접적인 RNA 중합효소의 C-말단 도메인(CTD)의 Ser-2' 인화를 매개한다. 그러나 이산화탄소는 생체에서 추가적인 증가를 포함한다 (PubMed:22509028). 아세틸화 히스톤 외에도 아세틸화된 RELA를 인식하고 결합하여 P-TEFb 복합체의 추가적인 모노머에 따른 NF-κB 활성을 유한다 (PubMed:19103749). 또한 p53/TP53 매개 전이 조절 역할을 한다. CK2에 의한 인산화 후 p53/TP53 특이적 프로테오솜을 형성한다 (PubMed:23317504).

연구 분야

후생변화/핵산/세포

이미지 데이터



HeLa 세포 용출액에서 Brd4 발현에 대한 웨스턴 블롯 분석