

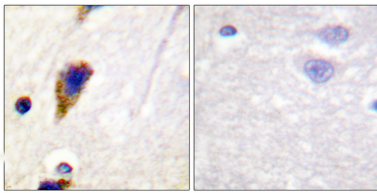


별생에이GTP를결합및가분할수있는새로운관함성단질소수송과정특이표에이관함성이가능다유점다이민계속합다유점1개의GED모양을포함다유점:1개의PH모양을포함다세포내위세포관련소위CAV1및SH3GLB1과상호합다SH3GL1, SH3GL2 및SH3GL3에결합다

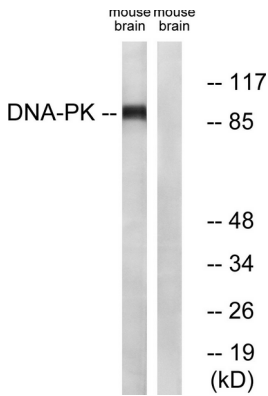
## 연구 분야

세포내Fc감시매개작용

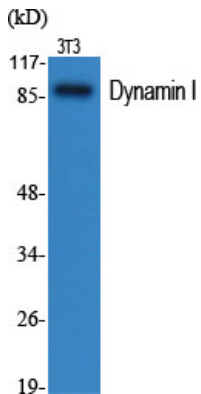
## 이미지 데이터



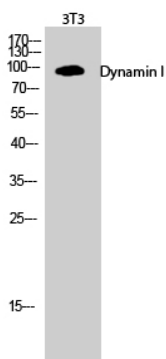
표면포된인노조에대한역조화분석다이민1형사용. 오른쪽은합합이로차이한결합다



Dynamin-1형사용이무노양을웨던분석다. 오른쪽은합합이로차이한결합다



다이민 다른항체이용다이민세포웨던분석



다이민 다른항체이용3T3 세포웨던분석

