

**제품명: Bak** 토끼 다클론 항체  
**카탈로그 번호: APRab03721**  
연구용 전용

## 요약

설명	토끼 다클론 항체
숙주	토끼
적용	WB, IHC, ICC/IF, FC, IP
반응성	인간
결합	비특이적
변형	수정되지 않음
아이소타입	IgG
클론성	다클론
형태	액체
농도	1mg/ml
Storage	Aliquot 하여 $-20^{\circ}\text{C}$ 에 보관(12개월 유효). 냉동/해동 반복을 피하십시오.
Shipping	Ice bags
버퍼	토끼 IgG는 인산염 완충액(pH 7.4, 150mM NaCl, 0.02% 아지다나트륨 및 50% 글리세롤)에 용해되어 있습니다.
정제	천성 크로마토그래피

## 적용

희석 비율	WB 1:500-1:1000, IHC 1:50-1:100, ICC/IF 1:50-1:200, FC 1:50-1:100, IP 1:20-1:50
분자량	Calculated MW: 23 kDa; Observed MW: 23 kDa

## 항원 정보

유전자명	BAK1
다른 이름	BAK1; BAK; BCL2L7; CDN1; Bcl-2 homologous antagonist/killer; Apoptosis regulator BAK; Bcl-2-like protein 7; Bcl2-L-7
유전자 ID	578
SwissProt ID	Q16611
면역원	인간 Bak의 항원 펩타이드

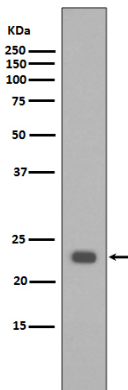
## 배경

Bak는 Bcl-2 계열의 Bcl-2 유사 단백질입니다. 이 단백질은 미토콘드리아 외막에 위치하며 미토콘드리아를 통한 세포 사멸 신호 전달에 필수적인 요소입니다. 세포 사멸 자극 시, 이 단백질은 Bcl-2와 같은 상위 지문자가 Bak의 구조적 변화를 유도하여 미토콘드리아 외막에 구멍을 형성하고, 이를 통해 세포 사멸을 촉진합니다. 세포 사멸은 Bcl-2 계열의 다른 구성원인 Bcl-2, Bcl-xL, Bcl-2L1, Bcl-2L2, Bcl-2L3, Bcl-2L4, Bcl-2L5, Bcl-2L6, Bcl-2L7, Bcl-2L8, Bcl-2L9, Bcl-2L10, Bcl-2L11, Bcl-2L12, Bcl-2L13, Bcl-2L14, Bcl-2L15, Bcl-2L16, Bcl-2L17, Bcl-2L18, Bcl-2L19, Bcl-2L20, Bcl-2L21, Bcl-2L22, Bcl-2L23, Bcl-2L24, Bcl-2L25, Bcl-2L26, Bcl-2L27, Bcl-2L28, Bcl-2L29, Bcl-2L30, Bcl-2L31, Bcl-2L32, Bcl-2L33, Bcl-2L34, Bcl-2L35, Bcl-2L36, Bcl-2L37, Bcl-2L38, Bcl-2L39, Bcl-2L40, Bcl-2L41, Bcl-2L42, Bcl-2L43, Bcl-2L44, Bcl-2L45, Bcl-2L46, Bcl-2L47, Bcl-2L48, Bcl-2L49, Bcl-2L50, Bcl-2L51, Bcl-2L52, Bcl-2L53, Bcl-2L54, Bcl-2L55, Bcl-2L56, Bcl-2L57, Bcl-2L58, Bcl-2L59, Bcl-2L60, Bcl-2L61, Bcl-2L62, Bcl-2L63, Bcl-2L64, Bcl-2L65, Bcl-2L66, Bcl-2L67, Bcl-2L68, Bcl-2L69, Bcl-2L70, Bcl-2L71, Bcl-2L72, Bcl-2L73, Bcl-2L74, Bcl-2L75, Bcl-2L76, Bcl-2L77, Bcl-2L78, Bcl-2L79, Bcl-2L80, Bcl-2L81, Bcl-2L82, Bcl-2L83, Bcl-2L84, Bcl-2L85, Bcl-2L86, Bcl-2L87, Bcl-2L88, Bcl-2L89, Bcl-2L90, Bcl-2L91, Bcl-2L92, Bcl-2L93, Bcl-2L94, Bcl-2L95, Bcl-2L96, Bcl-2L97, Bcl-2L98, Bcl-2L99, Bcl-2L100, Bcl-2L101, Bcl-2L102, Bcl-2L103, Bcl-2L104, Bcl-2L105, Bcl-2L106, Bcl-2L107, Bcl-2L108, Bcl-2L109, Bcl-2L110, Bcl-2L111, Bcl-2L112, Bcl-2L113, Bcl-2L114, Bcl-2L115, Bcl-2L116, Bcl-2L117, Bcl-2L118, Bcl-2L119, Bcl-2L120, Bcl-2L121, Bcl-2L122, Bcl-2L123, Bcl-2L124, Bcl-2L125, Bcl-2L126, Bcl-2L127, Bcl-2L128, Bcl-2L129, Bcl-2L130, Bcl-2L131, Bcl-2L132, Bcl-2L133, Bcl-2L134, Bcl-2L135, Bcl-2L136, Bcl-2L137, Bcl-2L138, Bcl-2L139, Bcl-2L140, Bcl-2L141, Bcl-2L142, Bcl-2L143, Bcl-2L144, Bcl-2L145, Bcl-2L146, Bcl-2L147, Bcl-2L148, Bcl-2L149, Bcl-2L150, Bcl-2L151, Bcl-2L152, Bcl-2L153, Bcl-2L154, Bcl-2L155, Bcl-2L156, Bcl-2L157, Bcl-2L158, Bcl-2L159, Bcl-2L160, Bcl-2L161, Bcl-2L162, Bcl-2L163, Bcl-2L164, Bcl-2L165, Bcl-2L166, Bcl-2L167, Bcl-2L168, Bcl-2L169, Bcl-2L170, Bcl-2L171, Bcl-2L172, Bcl-2L173, Bcl-2L174, Bcl-2L175, Bcl-2L176, Bcl-2L177, Bcl-2L178, Bcl-2L179, Bcl-2L180, Bcl-2L181, Bcl-2L182, Bcl-2L183, Bcl-2L184, Bcl-2L185, Bcl-2L186, Bcl-2L187, Bcl-2L188, Bcl-2L189, Bcl-2L190, Bcl-2L191, Bcl-2L192, Bcl-2L193, Bcl-2L194, Bcl-2L195, Bcl-2L196, Bcl-2L197, Bcl-2L198, Bcl-2L199, Bcl-2L200, Bcl-2L201, Bcl-2L202, Bcl-2L203, Bcl-2L204, Bcl-2L205, Bcl-2L206, Bcl-2L207, Bcl-2L208, Bcl-2L209, Bcl-2L210, Bcl-2L211, Bcl-2L212, Bcl-2L213, Bcl-2L214, Bcl-2L215, Bcl-2L216, Bcl-2L217, Bcl-2L218, Bcl-2L219, Bcl-2L220, Bcl-2L221, Bcl-2L222, Bcl-2L223, Bcl-2L224, Bcl-2L225, Bcl-2L226, Bcl-2L227, Bcl-2L228, Bcl-2L229, Bcl-2L230, Bcl-2L231, Bcl-2L232, Bcl-2L233, Bcl-2L234, Bcl-2L235, Bcl-2L236, Bcl-2L237, Bcl-2L238, Bcl-2L239, Bcl-2L240, Bcl-2L241, Bcl-2L242, Bcl-2L243, Bcl-2L244, Bcl-2L245, Bcl-2L246, Bcl-2L247, Bcl-2L248, Bcl-2L249, Bcl-2L250, Bcl-2L251, Bcl-2L252, Bcl-2L253, Bcl-2L254, Bcl-2L255, Bcl-2L256, Bcl-2L257, Bcl-2L258, Bcl-2L259, Bcl-2L260, Bcl-2L261, Bcl-2L262, Bcl-2L263, Bcl-2L264, Bcl-2L265, Bcl-2L266, Bcl-2L267, Bcl-2L268, Bcl-2L269, Bcl-2L270, Bcl-2L271, Bcl-2L272, Bcl-2L273, Bcl-2L274, Bcl-2L275, Bcl-2L276, Bcl-2L277, Bcl-2L278, Bcl-2L279, Bcl-2L280, Bcl-2L281, Bcl-2L282, Bcl-2L283, Bcl-2L284, Bcl-2L285, Bcl-2L286, Bcl-2L287, Bcl-2L288, Bcl-2L289, Bcl-2L290, Bcl-2L291, Bcl-2L292, Bcl-2L293, Bcl-2L294, Bcl-2L295, Bcl-2L296, Bcl-2L297, Bcl-2L298, Bcl-2L299, Bcl-2L300, Bcl-2L301, Bcl-2L302, Bcl-2L303, Bcl-2L304, Bcl-2L305, Bcl-2L306, Bcl-2L307, Bcl-2L308, Bcl-2L309, Bcl-2L310, Bcl-2L311, Bcl-2L312, Bcl-2L313, Bcl-2L314, Bcl-2L315, Bcl-2L316, Bcl-2L317, Bcl-2L318, Bcl-2L319, Bcl-2L320, Bcl-2L321, Bcl-2L322, Bcl-2L323, Bcl-2L324, Bcl-2L325, Bcl-2L326, Bcl-2L327, Bcl-2L328, Bcl-2L329, Bcl-2L330, Bcl-2L331, Bcl-2L332, Bcl-2L333, Bcl-2L334, Bcl-2L335, Bcl-2L336, Bcl-2L337, Bcl-2L338, Bcl-2L339, Bcl-2L340, Bcl-2L341, Bcl-2L342, Bcl-2L343, Bcl-2L344, Bcl-2L345, Bcl-2L346, Bcl-2L347, Bcl-2L348, Bcl-2L349, Bcl-2L350, Bcl-2L351, Bcl-2L352, Bcl-2L353, Bcl-2L354, Bcl-2L355, Bcl-2L356, Bcl-2L357, Bcl-2L358, Bcl-2L359, Bcl-2L360, Bcl-2L361, Bcl-2L362, Bcl-2L363, Bcl-2L364, Bcl-2L365, Bcl-2L366, Bcl-2L367, Bcl-2L368, Bcl-2L369, Bcl-2L370, Bcl-2L371, Bcl-2L372, Bcl-2L373, Bcl-2L374, Bcl-2L375, Bcl-2L376, Bcl-2L377, Bcl-2L378, Bcl-2L379, Bcl-2L380, Bcl-2L381, Bcl-2L382, Bcl-2L383, Bcl-2L384, Bcl-2L385, Bcl-2L386, Bcl-2L387, Bcl-2L388, Bcl-2L389, Bcl-2L390, Bcl-2L391, Bcl-2L392, Bcl-2L393, Bcl-2L394, Bcl-2L395, Bcl-2L396, Bcl-2L397, Bcl-2L398, Bcl-2L399, Bcl-2L400, Bcl-2L401, Bcl-2L402, Bcl-2L403, Bcl-2L404, Bcl-2L405, Bcl-2L406, Bcl-2L407, Bcl-2L408, Bcl-2L409, Bcl-2L410, Bcl-2L411, Bcl-2L412, Bcl-2L413, Bcl-2L414, Bcl-2L415, Bcl-2L416, Bcl-2L417, Bcl-2L418, Bcl-2L419, Bcl-2L420, Bcl-2L421, Bcl-2L422, Bcl-2L423, Bcl-2L424, Bcl-2L425, Bcl-2L426, Bcl-2L427, Bcl-2L428, Bcl-2L429, Bcl-2L430, Bcl-2L431, Bcl-2L432, Bcl-2L433, Bcl-2L434, Bcl-2L435, Bcl-2L436, Bcl-2L437, Bcl-2L438, Bcl-2L439, Bcl-2L440, Bcl-2L441, Bcl-2L442, Bcl-2L443, Bcl-2L444, Bcl-2L445, Bcl-2L446, Bcl-2L447, Bcl-2L448, Bcl-2L449, Bcl-2L450, Bcl-2L451, Bcl-2L452, Bcl-2L453, Bcl-2L454, Bcl-2L455, Bcl-2L456, Bcl-2L457, Bcl-2L458, Bcl-2L459, Bcl-2L460, Bcl-2L461, Bcl-2L462, Bcl-2L463, Bcl-2L464, Bcl-2L465, Bcl-2L466, Bcl-2L467, Bcl-2L468, Bcl-2L469, Bcl-2L470, Bcl-2L471, Bcl-2L472, Bcl-2L473, Bcl-2L474, Bcl-2L475, Bcl-2L476, Bcl-2L477, Bcl-2L478, Bcl-2L479, Bcl-2L480, Bcl-2L481, Bcl-2L482, Bcl-2L483, Bcl-2L484, Bcl-2L485, Bcl-2L486, Bcl-2L487, Bcl-2L488, Bcl-2L489, Bcl-2L490, Bcl-2L491, Bcl-2L492, Bcl-2L493, Bcl-2L494, Bcl-2L495, Bcl-2L496, Bcl-2L497, Bcl-2L498, Bcl-2L499, Bcl-2L500, Bcl-2L501, Bcl-2L502, Bcl-2L503, Bcl-2L504, Bcl-2L505, Bcl-2L506, Bcl-2L507, Bcl-2L508, Bcl-2L509, Bcl-2L510, Bcl-2L511, Bcl-2L512, Bcl-2L513, Bcl-2L514, Bcl-2L515, Bcl-2L516, Bcl-2L517, Bcl-2L518, Bcl-2L519, Bcl-2L520, Bcl-2L521, Bcl-2L522, Bcl-2L523, Bcl-2L524, Bcl-2L525, Bcl-2L526, Bcl-2L527, Bcl-2L528, Bcl-2L529, Bcl-2L530, Bcl-2L531, Bcl-2L532, Bcl-2L533, Bcl-2L534, Bcl-2L535, Bcl-2L536, Bcl-2L537, Bcl-2L538, Bcl-2L539, Bcl-2L540, Bcl-2L541, Bcl-2L542, Bcl-2L543, Bcl-2L544, Bcl-2L545, Bcl-2L546, Bcl-2L547, Bcl-2L548, Bcl-2L549, Bcl-2L550, Bcl-2L551, Bcl-2L552, Bcl-2L553, Bcl-2L554, Bcl-2L555, Bcl-2L556, Bcl-2L557, Bcl-2L558, Bcl-2L559, Bcl-2L560, Bcl-2L561, Bcl-2L562, Bcl-2L563, Bcl-2L564, Bcl-2L565, Bcl-2L566, Bcl-2L567, Bcl-2L568, Bcl-2L569, Bcl-2L570, Bcl-2L571, Bcl-2L572, Bcl-2L573, Bcl-2L574, Bcl-2L575, Bcl-2L576, Bcl-2L577, Bcl-2L578, Bcl-2L579, Bcl-2L580, Bcl-2L581, Bcl-2L582, Bcl-2L583, Bcl-2L584, Bcl-2L585, Bcl-2L586, Bcl-2L587, Bcl-2L588, Bcl-2L589, Bcl-2L590, Bcl-2L591, Bcl-2L592, Bcl-2L593, Bcl-2L594, Bcl-2L595, Bcl-2L596, Bcl-2L597, Bcl-2L598, Bcl-2L599, Bcl-2L600, Bcl-2L601, Bcl-2L602, Bcl-2L603, Bcl-2L604, Bcl-2L605, Bcl-2L606, Bcl-2L607, Bcl-2L608, Bcl-2L609, Bcl-2L610, Bcl-2L611, Bcl-2L612, Bcl-2L613, Bcl-2L614, Bcl-2L615, Bcl-2L616, Bcl-2L617, Bcl-2L618, Bcl-2L619, Bcl-2L620, Bcl-2L621, Bcl-2L622, Bcl-2L623, Bcl-2L624, Bcl-2L625, Bcl-2L626, Bcl-2L627, Bcl-2L628, Bcl-2L629, Bcl-2L630, Bcl-2L631, Bcl-2L632, Bcl-2L633, Bcl-2L634, Bcl-2L635, Bcl-2L636, Bcl-2L637, Bcl-2L638, Bcl-2L639, Bcl-2L640, Bcl-2L641, Bcl-2L642, Bcl-2L643, Bcl-2L644, Bcl-2L645, Bcl-2L646, Bcl-2L647, Bcl-2L648, Bcl-2L649, Bcl-2L650, Bcl-2L651, Bcl-2L652, Bcl-2L653, Bcl-2L654, Bcl-2L655, Bcl-2L656, Bcl-2L657, Bcl-2L658, Bcl-2L659, Bcl-2L660, Bcl-2L661, Bcl-2L662, Bcl-2L663, Bcl-2L664, Bcl-2L665, Bcl-2L666, Bcl-2L667, Bcl-2L668, Bcl-2L669, Bcl-2L670, Bcl-2L671, Bcl-2L672, Bcl-2L673, Bcl-2L674, Bcl-2L675, Bcl-2L676, Bcl-2L677, Bcl-2L678, Bcl-2L679, Bcl-2L680, Bcl-2L681, Bcl-2L682, Bcl-2L683, Bcl-2L684, Bcl-2L685, Bcl-2L686, Bcl-2L687, Bcl-2L688, Bcl-2L689, Bcl-2L690, Bcl-2L691, Bcl-2L692, Bcl-2L693, Bcl-2L694, Bcl-2L695, Bcl-2L696, Bcl-2L697, Bcl-2L698, Bcl-2L699, Bcl-2L700, Bcl-2L701, Bcl-2L702, Bcl-2L703, Bcl-2L704, Bcl-2L705, Bcl-2L706, Bcl-2L707, Bcl-2L708, Bcl-2L709, Bcl-2L710, Bcl-2L711, Bcl-2L712, Bcl-2L713, Bcl-2L714, Bcl-2L715, Bcl-2L716, Bcl-2L717, Bcl-2L718, Bcl-2L719, Bcl-2L720, Bcl-2L721, Bcl-2L722, Bcl-2L723, Bcl-2L724, Bcl-2L725, Bcl-2L726, Bcl-2L727, Bcl-2L728, Bcl-2L729, Bcl-2L730, Bcl-2L731, Bcl-2L732, Bcl-2L733, Bcl-2L734, Bcl-2L735, Bcl-2L736, Bcl-2L737, Bcl-2L738, Bcl-2L739, Bcl-2L740, Bcl-2L741, Bcl-2L742, Bcl-2L743, Bcl-2L744, Bcl-2L745, Bcl-2L746, Bcl-2L747, Bcl-2L748, Bcl-2L749, Bcl-2L750, Bcl-2L751, Bcl-2L752, Bcl-2L753, Bcl-2L754, Bcl-2L755, Bcl-2L756, Bcl-2L757, Bcl-2L758, Bcl-2L759, Bcl-2L760, Bcl-2L761, Bcl-2L762, Bcl-2L763, Bcl-2L764, Bcl-2L765, Bcl-2L766, Bcl-2L767, Bcl-2L768, Bcl-2L769, Bcl-2L770, Bcl-2L771, Bcl-2L772, Bcl-2L773, Bcl-2L774, Bcl-2L775, Bcl-2L776, Bcl-2L777, Bcl-2L778, Bcl-2L779, Bcl-2L780, Bcl-2L781, Bcl-2L782, Bcl-2L783, Bcl-2L784, Bcl-2L785, Bcl-2L786, Bcl-2L787, Bcl-2L788, Bcl-2L789, Bcl-2L790, Bcl-2L791, Bcl-2L792, Bcl-2L793, Bcl-2L794, Bcl-2L795, Bcl-2L796, Bcl-2L797, Bcl-2L798, Bcl-2L799, Bcl-2L800, Bcl-2L801, Bcl-2L802, Bcl-2L803, Bcl-2L804, Bcl-2L805, Bcl-2L806, Bcl-2L807, Bcl-2L808, Bcl-2L809, Bcl-2L810, Bcl-2L811, Bcl-2L812, Bcl-2L813, Bcl-2L814, Bcl-2L815, Bcl-2L816, Bcl-2L817, Bcl-2L818, Bcl-2L819, Bcl-2L820, Bcl-2L821, Bcl-2L822, Bcl-2L823, Bcl-2L824, Bcl-2L825, Bcl-2L826, Bcl-2L827, Bcl-2L828, Bcl-2L829, Bcl-2L830, Bcl-2L831, Bcl-2L832, Bcl-2L833, Bcl-2L834, Bcl-2L835, Bcl-2L836, Bcl-2L837, Bcl-2L838, Bcl-2L839, Bcl-2L840, Bcl-2L841, Bcl-2L842, Bcl-2L843, Bcl-2L844, Bcl-2L845, Bcl-2L846, Bcl-2L847, Bcl-2L848, Bcl-2L849, Bcl-2L850, Bcl-2L851, Bcl-2L852, Bcl-2L853, Bcl-2L854, Bcl-2L855, Bcl-2L856, Bcl-2L857, Bcl-2L858, Bcl-2L859, Bcl-2L860, Bcl-2L861, Bcl-2L862, Bcl-2L863, Bcl-2L864, Bcl-2L865, Bcl-2L866, Bcl-2L867, Bcl-2L868, Bcl-2L869, Bcl-2L870, Bcl-2L871, Bcl-2L872, Bcl-2L873, Bcl-2L874, Bcl-2L875, Bcl-2L876, Bcl-2L877, Bcl-2L878, Bcl-2L879, Bcl-2L880, Bcl-2L881, Bcl-2L882, Bcl-2L883, Bcl-2L884, Bcl-2L885, Bcl-2L886, Bcl-2L887, Bcl-2L888, Bcl-2L889, Bcl-2L890, Bcl-2L891, Bcl-2L892, Bcl-2L893, Bcl-2L894, Bcl-2L895, Bcl-2L896, Bcl-2L897, Bcl-2L898, Bcl-2L899, Bcl-2L900, Bcl-2L901, Bcl-2L902, Bcl-2L903, Bcl-2L904, Bcl-2L905, Bcl-2L906, Bcl-2L907, Bcl-2L908, Bcl-2L909, Bcl-2L910, Bcl-2L911, Bcl-2L912, Bcl-2L913, Bcl-2L914, Bcl-2L915, Bcl-2L916, Bcl-2L917, Bcl-2L918, Bcl-2L919, Bcl-2L920, Bcl-2L921, Bcl-2L922, Bcl-2L923, Bcl-2L924, Bcl-2L925, Bcl-2L926, Bcl-2L927, Bcl-2L928, Bcl-2L929, Bcl-2L930, Bcl-2L931, Bcl-2L932, Bcl-2L933, Bcl-2L934, Bcl-2L935, Bcl-2L936, Bcl-2L937, Bcl-2L938, Bcl-2L939, Bcl-2L940, Bcl-2L941, Bcl-2L942, Bcl-2L943, Bcl-2L944, Bcl-2L945, Bcl-2L946, Bcl-2L947, Bcl-2L948, Bcl-2L949, Bcl-2L950, Bcl-2L951, Bcl-2L952, Bcl-2L953, Bcl-2L954, Bcl-2L955, Bcl-2L956, Bcl-2L957, Bcl-2L958, Bcl-2L959, Bcl-2L960, Bcl-2L961, Bcl-2L962, Bcl-2L963, Bcl-2L964, Bcl-2L965, Bcl-2L966, Bcl-2L967, Bcl-2L968, Bcl-2L969, Bcl-2L970, Bcl-2L971, Bcl-2L972, Bcl-2L973, Bcl-2L974, Bcl-2L975, Bcl-2L976, Bcl-2L977, Bcl-2L978, Bcl-2L979, Bcl-2L980, Bcl-2L981, Bcl-2L982, Bcl-2L983, Bcl-2L984, Bcl-2L985, Bcl-2L986, Bcl-2L987, Bcl-2L988, Bcl-2L989, Bcl-2L990, Bcl-2L991, Bcl-2L992, Bcl-2L993, Bcl-2L994, Bcl-2L995, Bcl-2L996, Bcl-2L997, Bcl-2L998, Bcl-2L999, Bcl-2L1000, Bcl-2L1001, Bcl-2L1002, Bcl-2L1003, Bcl-2L1004, Bcl-2L1005, Bcl-2L1006, Bcl-2L1007, Bcl-2L1008, Bcl-2L1009, Bcl-2L1010, Bcl-2L1011, Bcl-2L1012, Bcl-2L1013, Bcl-2L1014, Bcl-2L1015, Bcl-2L1016, Bcl-2L1017, Bcl-2L1018, Bcl-2L1019, Bcl-2L1020, Bcl-2L1021, Bcl-2L1022, Bcl-2L1023, Bcl-2L1024, Bcl-2L1025, Bcl-2L1026, Bcl-2L1027, Bcl-2L1028, Bcl-2L1029, Bcl-2L1030, Bcl-2L1031, Bcl-2L1032, Bcl-2L1033, Bcl-2L1034, Bcl-2L1035, Bcl-2L1036, Bcl-2L1037, Bcl-2L1038, Bcl-2L1039, Bcl-2L1040, Bcl-2L1041, Bcl-2L1042, Bcl-2L1043, Bcl-2L1044, Bcl-2L1045, Bcl-2L1046, Bcl-2L1047, Bcl-2L1048, Bcl-2L1049, Bcl-2L1050, Bcl-2L1051, Bcl-2L1052, Bcl-2L1053, Bcl-2L1054, Bcl-2L1055, Bcl-2L1056, Bcl-2L1057, Bcl-2L1058, Bcl-2L1059, Bcl-2L1060, Bcl-2L1061, Bcl-2L1062, Bcl-2L1063, Bcl-2L1064, Bcl-2L1065, Bcl-2L1066, Bcl-2L1067, Bcl-2L1068, Bcl-2L1069, Bcl-2L1070, Bcl-2L1071, Bcl-2L1072, Bcl-2L1073, Bcl-2L1074, Bcl-2L1075, Bcl-2L1076, Bcl-2L1077, Bcl-2L1078, Bcl-2L1079, Bcl-2L1080, Bcl-2L1081, Bcl-2L1082, Bcl-2L1083, Bcl-2L1084, Bcl-2L1085, Bcl-2L1086, Bcl-2L1087, Bcl-2L1088, Bcl-2L1089, Bcl-2L1090, Bcl-2L1091, Bcl-2L1092, Bcl-2L1093, Bcl-2L1094, Bcl-2L1095, Bcl-2L1096, Bcl-2L1097, Bcl-2L1098, Bcl-2L1099, Bcl-2L1100, Bcl-2L1101, Bcl-2L1102, Bcl-2L1103, Bcl-2L1104, Bcl-2L1105, Bcl-2L1106, Bcl-2L1107, Bcl-2L1108, Bcl-2L1109, Bcl-2L1110, Bcl-2L1111, Bcl-2L1112, Bcl-2L1113, Bcl-2L1114, Bcl-2L1115, Bcl-2L1116, Bcl-2L1117, Bcl-2L1118, Bcl-2L1119, Bcl-2L1120, Bcl-2L1121, Bcl-2L1122, Bcl-2L1123, Bcl-2L1124, Bcl-2L1125, Bcl-2L1126, Bcl-2L1127, Bcl-2L1128, Bcl-2L1129, Bcl-2L1130, Bcl-2L1131, Bcl-2L1132, Bcl-2L1133, Bcl-2L1134, Bcl-2L1135, Bcl-2L1136, Bcl-2L1137, Bcl-2L1138, Bcl-2L1139, Bcl-2L1140, Bcl-2L1141, Bcl-2L1142, Bcl-2L1143, Bcl-2L1144, Bcl-2L1145, Bcl-2L1146, Bcl-2L1147, Bcl-2L1148, Bcl-2L1149, Bcl-2L1150, Bcl-2L1151, Bcl-2L1152, Bcl-2L1153, Bcl-2L1154, Bcl-2L1155, Bcl-2L1156, Bcl-2L1157, Bcl-2L1158, Bcl-2L1159, Bcl-2L1160, Bcl-2L1161, Bcl-2L1162, Bcl-2L1163, Bcl-2L1164, Bcl-2L1165, Bcl-2L1166, Bcl-2L1167, Bcl-2L1168, Bcl-2L1169, Bcl-2L1170, Bcl-2L1171, Bcl-2L1172, Bcl-2L1173, Bcl-2L1174, Bcl-2L1175, Bcl-2L1176, Bcl-2L1177, Bcl-2L1178, Bcl-2L1179, Bcl-2L1180, Bcl-2L1181, Bcl-2L1182, Bcl-2L1183, Bcl-2L1184, Bcl-2L1185, Bcl-2L1186, Bcl-2L1187, Bcl-2L1188, Bcl-2L1189, Bcl-2L1190, Bcl-2L1191, Bcl-2L1192, Bcl-2L1193, Bcl-2L1194, Bcl-2L1195, Bcl-2L1196, Bcl-2L1197, Bcl-2L1198, Bcl-2L1199, Bcl-2L1200, Bcl-2L1201, Bcl-2L1202, Bcl-2L1203, Bcl-2L1204, Bcl-2L1205, Bcl-2L1206, Bcl-2L1207, Bcl-2L1208, Bcl-2L1209, Bcl-2L1210, Bcl-2L1211, Bcl-2L1212, Bcl-2L1213, Bcl-2L1214, Bcl-2L1215, Bcl-2L1216, Bcl-2L1217, Bcl-2L1218, Bcl-2L1219, Bcl-2L1220, Bcl-2L1221, Bcl-2L1222, Bcl-2L1223, Bcl-2L1224, Bcl-2L1225, Bcl-2L1226, Bcl-2L1227, Bcl-2L1228, Bcl-2L1229, Bcl-2L1230, Bcl-2L1231, Bcl-2L1232,

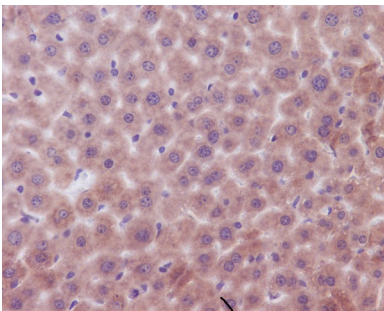
## 연구 분야

세포 생물학

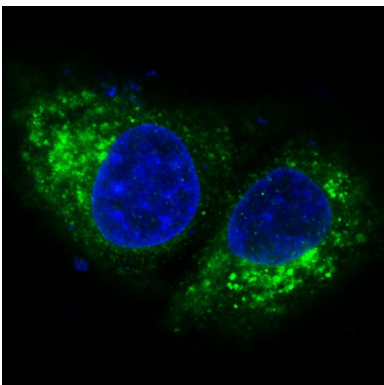
## 이미지 데이터



Bak 항체를 사용하여 HeLa 세포 용출액에서 Bak 단백질을 확인 분석하였다.



과산화수소염색을 사용하여 Bak 항체를 통한 면역조직화 분석을 하였다. 항인화하는 과산화수소염색을 pH 6.0 용액에서 하였다.



Bak 항체를 통한 HeLa 세포에서 Bak의 면역형광 분석