

제품명: PTEN 토끼 다클론 항체

카탈로그 번호: APRab01381

연구용 전용

요약

설명	토끼 다클론 항체
숙주	토끼
적용	WB
반응성	인간
결합	비결합
변형	수정되지 않음
아이소타입	IgG
클론성	다클론
형태	액체
농도	1mg/ml
Storage	Aliquot 하여 -20°C 에 보관(12 개월 유효). 냉동/해동 반복을 피하십시오.
Shipping	Ice bags
버퍼	50mM 트리스클로르산(pH 7.4), 0.15M NaCl, 40% 글세롤, 0.01% 아지다 트림릿, 0.05% 보르덴필
정제	천상정제

적용

희석 비율	WB 1:500-1:1000
분자량	Calculated MW: 47 kDa; Observed MW: 54 kDa

항원 정보

유전자명	PTEN
다른 이름	PTEN; MMAC1; TEP1; Phosphatidylinositol 3; 4; 5-trisphosphate 3-phosphatase and dual-specificity protein phosphatase PTEN; Mutated in multiple advanced cancers 1; Phosphatase and tensin homolog
유전자 ID	5728
SwissProt ID	P60484
면역원	표적 단백질에 대한 항원 펩타이드

배경

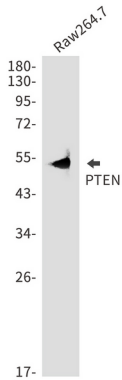
중요한 종양 억제 단백질인 PTEN은 세포 성장, 분화, 세포 사멸 및 세포 이동에 관여하는 다양한 세포 신호 전달 경로를 조절합니다. PTEN은 인산화된 PI3K의 표적이며, PI3K는 Akt, IKK, GSK-3, S6K, mTOR, p70S6, p90RSK, p38, p42JNK, p44ERK1, p42ERK2, p39LTK, p39FAK, p39FAK2, p39FAK3, p39FAK4, p39FAK5, p39FAK6, p39FAK7, p39FAK8, p39FAK9, p39FAK10, p39FAK11, p39FAK12, p39FAK13, p39FAK14, p39FAK15, p39FAK16, p39FAK17, p39FAK18, p39FAK19, p39FAK20, p39FAK21, p39FAK22, p39FAK23, p39FAK24, p39FAK25, p39FAK26, p39FAK27, p39FAK28, p39FAK29, p39FAK30, p39FAK31, p39FAK32, p39FAK33, p39FAK34, p39FAK35, p39FAK36, p39FAK37, p39FAK38, p39FAK39, p39FAK40, p39FAK41, p39FAK42, p39FAK43, p39FAK44, p39FAK45, p39FAK46, p39FAK47, p39FAK48, p39FAK49, p39FAK50, p39FAK51, p39FAK52, p39FAK53, p39FAK54, p39FAK55, p39FAK56, p39FAK57, p39FAK58, p39FAK59, p39FAK60, p39FAK61, p39FAK62, p39FAK63, p39FAK64, p39FAK65, p39FAK66, p39FAK67, p39FAK68, p39FAK69, p39FAK70, p39FAK71, p39FAK72, p39FAK73, p39FAK74, p39FAK75, p39FAK76, p39FAK77, p39FAK78, p39FAK79, p39FAK80, p39FAK81, p39FAK82, p39FAK83, p39FAK84, p39FAK85, p39FAK86, p39FAK87, p39FAK88, p39FAK89, p39FAK90, p39FAK91, p39FAK92, p39FAK93, p39FAK94, p39FAK95, p39FAK96, p39FAK97, p39FAK98, p39FAK99, p39FAK100, p39FAK101, p39FAK102, p39FAK103, p39FAK104, p39FAK105, p39FAK106, p39FAK107, p39FAK108, p39FAK109, p39FAK110, p39FAK111, p39FAK112, p39FAK113, p39FAK114, p39FAK115, p39FAK116, p39FAK117, p39FAK118, p39FAK119, p39FAK120, p39FAK121, p39FAK122, p39FAK123, p39FAK124, p39FAK125, p39FAK126, p39FAK127, p39FAK128, p39FAK129, p39FAK130, p39FAK131, p39FAK132, p39FAK133, p39FAK134, p39FAK135, p39FAK136, p39FAK137, p39FAK138, p39FAK139, p39FAK140, p39FAK141, p39FAK142, p39FAK143, p39FAK144, p39FAK145, p39FAK146, p39FAK147, p39FAK148, p39FAK149, p39FAK150, p39FAK151, p39FAK152, p39FAK153, p39FAK154, p39FAK155, p39FAK156, p39FAK157, p39FAK158, p39FAK159, p39FAK160, p39FAK161, p39FAK162, p39FAK163, p39FAK164, p39FAK165, p39FAK166, p39FAK167, p39FAK168, p39FAK169, p39FAK170, p39FAK171, p39FAK172, p39FAK173, p39FAK174, p39FAK175, p39FAK176, p39FAK177, p39FAK178, p39FAK179, p39FAK180, p39FAK181, p39FAK182, p39FAK183, p39FAK184, p39FAK185, p39FAK186, p39FAK187, p39FAK188, p39FAK189, p39FAK190, p39FAK191, p39FAK192, p39FAK193, p39FAK194, p39FAK195, p39FAK196, p39FAK197, p39FAK198, p39FAK199, p39FAK200, p39FAK201, p39FAK202, p39FAK203, p39FAK204, p39FAK205, p39FAK206, p39FAK207, p39FAK208, p39FAK209, p39FAK210, p39FAK211, p39FAK212, p39FAK213, p39FAK214, p39FAK215, p39FAK216, p39FAK217, p39FAK218, p39FAK219, p39FAK220, p39FAK221, p39FAK222, p39FAK223, p39FAK224, p39FAK225, p39FAK226, p39FAK227, p39FAK228, p39FAK229, p39FAK230, p39FAK231, p39FAK232, p39FAK233, p39FAK234, p39FAK235, p39FAK236, p39FAK237, p39FAK238, p39FAK239, p39FAK240, p39FAK241, p39FAK242, p39FAK243, p39FAK244, p39FAK245, p39FAK246, p39FAK247, p39FAK248, p39FAK249, p39FAK250, p39FAK251, p39FAK252, p39FAK253, p39FAK254, p39FAK255, p39FAK256, p39FAK257, p39FAK258, p39FAK259, p39FAK260, p39FAK261, p39FAK262, p39FAK263, p39FAK264, p39FAK265, p39FAK266, p39FAK267, p39FAK268, p39FAK269, p39FAK270, p39FAK271, p39FAK272, p39FAK273, p39FAK274, p39FAK275, p39FAK276, p39FAK277, p39FAK278, p39FAK279, p39FAK280, p39FAK281, p39FAK282, p39FAK283, p39FAK284, p39FAK285, p39FAK286, p39FAK287, p39FAK288, p39FAK289, p39FAK290, p39FAK291, p39FAK292, p39FAK293, p39FAK294, p39FAK295, p39FAK296, p39FAK297, p39FAK298, p39FAK299, p39FAK300, p39FAK301, p39FAK302, p39FAK303, p39FAK304, p39FAK305, p39FAK306, p39FAK307, p39FAK308, p39FAK309, p39FAK310, p39FAK311, p39FAK312, p39FAK313, p39FAK314, p39FAK315, p39FAK316, p39FAK317, p39FAK318, p39FAK319, p39FAK320, p39FAK321, p39FAK322, p39FAK323, p39FAK324, p39FAK325, p39FAK326, p39FAK327, p39FAK328, p39FAK329, p39FAK330, p39FAK331, p39FAK332, p39FAK333, p39FAK334, p39FAK335, p39FAK336, p39FAK337, p39FAK338, p39FAK339, p39FAK340, p39FAK341, p39FAK342, p39FAK343, p39FAK344, p39FAK345, p39FAK346, p39FAK347, p39FAK348, p39FAK349, p39FAK350, p39FAK351, p39FAK352, p39FAK353, p39FAK354, p39FAK355, p39FAK356, p39FAK357, p39FAK358, p39FAK359, p39FAK360, p39FAK361, p39FAK362, p39FAK363, p39FAK364, p39FAK365, p39FAK366, p39FAK367, p39FAK368, p39FAK369, p39FAK370, p39FAK371, p39FAK372, p39FAK373, p39FAK374, p39FAK375, p39FAK376, p39FAK377, p39FAK378, p39FAK379, p39FAK380, p39FAK381, p39FAK382, p39FAK383, p39FAK384, p39FAK385, p39FAK386, p39FAK387, p39FAK388, p39FAK389, p39FAK390, p39FAK391, p39FAK392, p39FAK393, p39FAK394, p39FAK395, p39FAK396, p39FAK397, p39FAK398, p39FAK399, p39FAK400, p39FAK401, p39FAK402, p39FAK403, p39FAK404, p39FAK405, p39FAK406, p39FAK407, p39FAK408, p39FAK409, p39FAK410, p39FAK411, p39FAK412, p39FAK413, p39FAK414, p39FAK415, p39FAK416, p39FAK417, p39FAK418, p39FAK419, p39FAK420, p39FAK421, p39FAK422, p39FAK423, p39FAK424, p39FAK425, p39FAK426, p39FAK427, p39FAK428, p39FAK429, p39FAK430, p39FAK431, p39FAK432, p39FAK433, p39FAK434, p39FAK435, p39FAK436, p39FAK437, p39FAK438, p39FAK439, p39FAK440, p39FAK441, p39FAK442, p39FAK443, p39FAK444, p39FAK445, p39FAK446, p39FAK447, p39FAK448, p39FAK449, p39FAK450, p39FAK451, p39FAK452, p39FAK453, p39FAK454, p39FAK455, p39FAK456, p39FAK457, p39FAK458, p39FAK459, p39FAK460, p39FAK461, p39FAK462, p39FAK463, p39FAK464, p39FAK465, p39FAK466, p39FAK467, p39FAK468, p39FAK469, p39FAK470, p39FAK471, p39FAK472, p39FAK473, p39FAK474, p39FAK475, p39FAK476, p39FAK477, p39FAK478, p39FAK479, p39FAK480, p39FAK481, p39FAK482, p39FAK483, p39FAK484, p39FAK485, p39FAK486, p39FAK487, p39FAK488, p39FAK489, p39FAK490, p39FAK491, p39FAK492, p39FAK493, p39FAK494, p39FAK495, p39FAK496, p39FAK497, p39FAK498, p39FAK499, p39FAK500, p39FAK501, p39FAK502, p39FAK503, p39FAK504, p39FAK505, p39FAK506, p39FAK507, p39FAK508, p39FAK509, p39FAK510, p39FAK511, p39FAK512, p39FAK513, p39FAK514, p39FAK515, p39FAK516, p39FAK517, p39FAK518, p39FAK519, p39FAK520, p39FAK521, p39FAK522, p39FAK523, p39FAK524, p39FAK525, p39FAK526, p39FAK527, p39FAK528, p39FAK529, p39FAK530, p39FAK531, p39FAK532, p39FAK533, p39FAK534, p39FAK535, p39FAK536, p39FAK537, p39FAK538, p39FAK539, p39FAK540, p39FAK541, p39FAK542, p39FAK543, p39FAK544, p39FAK545, p39FAK546, p39FAK547, p39FAK548, p39FAK549, p39FAK550, p39FAK551, p39FAK552, p39FAK553, p39FAK554, p39FAK555, p39FAK556, p39FAK557, p39FAK558, p39FAK559, p39FAK560, p39FAK561, p39FAK562, p39FAK563, p39FAK564, p39FAK565, p39FAK566, p39FAK567, p39FAK568, p39FAK569, p39FAK570, p39FAK571, p39FAK572, p39FAK573, p39FAK574, p39FAK575, p39FAK576, p39FAK577, p39FAK578, p39FAK579, p39FAK580, p39FAK581, p39FAK582, p39FAK583, p39FAK584, p39FAK585, p39FAK586, p39FAK587, p39FAK588, p39FAK589, p39FAK590, p39FAK591, p39FAK592, p39FAK593, p39FAK594, p39FAK595, p39FAK596, p39FAK597, p39FAK598, p39FAK599, p39FAK600, p39FAK601, p39FAK602, p39FAK603, p39FAK604, p39FAK605, p39FAK606, p39FAK607, p39FAK608, p39FAK609, p39FAK610, p39FAK611, p39FAK612, p39FAK613, p39FAK614, p39FAK615, p39FAK616, p39FAK617, p39FAK618, p39FAK619, p39FAK620, p39FAK621, p39FAK622, p39FAK623, p39FAK624, p39FAK625, p39FAK626, p39FAK627, p39FAK628, p39FAK629, p39FAK630, p39FAK631, p39FAK632, p39FAK633, p39FAK634, p39FAK635, p39FAK636, p39FAK637, p39FAK638, p39FAK639, p39FAK640, p39FAK641, p39FAK642, p39FAK643, p39FAK644, p39FAK645, p39FAK646, p39FAK647, p39FAK648, p39FAK649, p39FAK650, p39FAK651, p39FAK652, p39FAK653, p39FAK654, p39FAK655, p39FAK656, p39FAK657, p39FAK658, p39FAK659, p39FAK660, p39FAK661, p39FAK662, p39FAK663, p39FAK664, p39FAK665, p39FAK666, p39FAK667, p39FAK668, p39FAK669, p39FAK670, p39FAK671, p39FAK672, p39FAK673, p39FAK674, p39FAK675, p39FAK676, p39FAK677, p39FAK678, p39FAK679, p39FAK680, p39FAK681, p39FAK682, p39FAK683, p39FAK684, p39FAK685, p39FAK686, p39FAK687, p39FAK688, p39FAK689, p39FAK690, p39FAK691, p39FAK692, p39FAK693, p39FAK694, p39FAK695, p39FAK696, p39FAK697, p39FAK698, p39FAK699, p39FAK700, p39FAK701, p39FAK702, p39FAK703, p39FAK704, p39FAK705, p39FAK706, p39FAK707, p39FAK708, p39FAK709, p39FAK710, p39FAK711, p39FAK712, p39FAK713, p39FAK714, p39FAK715, p39FAK716, p39FAK717, p39FAK718, p39FAK719, p39FAK720, p39FAK721, p39FAK722, p39FAK723, p39FAK724, p39FAK725, p39FAK726, p39FAK727, p39FAK728, p39FAK729, p39FAK730, p39FAK731, p39FAK732, p39FAK733, p39FAK734, p39FAK735, p39FAK736, p39FAK737, p39FAK738, p39FAK739, p39FAK740, p39FAK741, p39FAK742, p39FAK743, p39FAK744, p39FAK745, p39FAK746, p39FAK747, p39FAK748, p39FAK749, p39FAK750, p39FAK751, p39FAK752, p39FAK753, p39FAK754, p39FAK755, p39FAK756, p39FAK757, p39FAK758, p39FAK759, p39FAK760, p39FAK761, p39FAK762, p39FAK763, p39FAK764, p39FAK765, p39FAK766, p39FAK767, p39FAK768, p39FAK769, p39FAK770, p39FAK771, p39FAK772, p39FAK773, p39FAK774, p39FAK775, p39FAK776, p39FAK777, p39FAK778, p39FAK779, p39FAK780, p39FAK781, p39FAK782, p39FAK783, p39FAK784, p39FAK785, p39FAK786, p39FAK787, p39FAK788, p39FAK789, p39FAK790, p39FAK791, p39FAK792, p39FAK793, p39FAK794, p39FAK795, p39FAK796, p39FAK797, p39FAK798, p39FAK799, p39FAK800, p39FAK801, p39FAK802, p39FAK803, p39FAK804, p39FAK805, p39FAK806, p39FAK807, p39FAK808, p39FAK809, p39FAK810, p39FAK811, p39FAK812, p39FAK813, p39FAK814, p39FAK815, p39FAK816, p39FAK817, p39FAK818, p39FAK819, p39FAK820, p39FAK821, p39FAK822, p39FAK823, p39FAK824, p39FAK825, p39FAK826, p39FAK827, p39FAK828, p39FAK829, p39FAK830, p39FAK831, p39FAK832, p39FAK833, p39FAK834, p39FAK835, p39FAK836, p39FAK837, p39FAK838, p39FAK839, p39FAK840, p39FAK841, p39FAK842, p39FAK843, p39FAK844, p39FAK845, p39FAK846, p39FAK847, p39FAK848, p39FAK849, p39FAK850, p39FAK851, p39FAK852, p39FAK853, p39FAK854, p39FAK855, p39FAK856, p39FAK857, p39FAK858, p39FAK859, p39FAK860, p39FAK861, p39FAK862, p39FAK863, p39FAK864, p39FAK865, p39FAK866, p39FAK867, p39FAK868, p39FAK869, p39FAK870, p39FAK871, p39FAK872, p39FAK873, p39FAK874, p39FAK875, p39FAK876, p39FAK877, p39FAK878, p39FAK879, p39FAK880, p39FAK881, p39FAK882, p39FAK883, p39FAK884, p39FAK885, p39FAK886, p39FAK887, p39FAK888, p39FAK889, p39FAK890, p39FAK891, p39FAK892, p39FAK893, p39FAK894, p39FAK895, p39FAK896, p39FAK897, p39FAK898, p39FAK899, p39FAK900, p39FAK901, p39FAK902, p39FAK903, p39FAK904, p39FAK905, p39FAK906, p39FAK907, p39FAK908, p39FAK909, p39FAK910, p39FAK911, p39FAK912, p39FAK913, p39FAK914, p39FAK915, p39FAK916, p39FAK917, p39FAK918, p39FAK919, p39FAK920, p39FAK921, p39FAK922, p39FAK923, p39FAK924, p39FAK925, p39FAK926, p39FAK927, p39FAK928, p39FAK929, p39FAK930, p39FAK931, p39FAK932, p39FAK933, p39FAK934, p39FAK935, p39FAK936, p39FAK937, p39FAK938, p39FAK939, p39FAK940, p39FAK941, p39FAK942, p39FAK943, p39FAK944, p39FAK945, p39FAK946, p39FAK947, p39FAK948, p39FAK949, p39FAK950, p39FAK951, p39FAK952, p39FAK953, p39FAK954, p39FAK955, p39FAK956, p39FAK957, p39FAK958, p39FAK959, p39FAK960, p39FAK961, p39FAK962, p39FAK963, p39FAK964, p39FAK965, p39FAK966, p39FAK967, p39FAK968, p39FAK969, p39FAK970, p39FAK971, p39FAK972, p39FAK973, p39FAK974, p39FAK975, p39FAK976, p39FAK977, p39FAK978, p39FAK979, p39FAK980, p39FAK981, p39FAK982, p39FAK983, p39FAK984, p39FAK985, p39FAK986, p39FAK987, p39FAK988, p39FAK989, p39FAK990, p39FAK991, p39FAK992, p39FAK993, p39FAK994, p39FAK995, p39FAK996, p39FAK997, p39FAK998, p39FAK999, p39FAK1000, p39FAK1001, p39FAK1002, p39FAK1003, p39FAK1004, p39FAK1005, p39FAK1006, p39FAK1007, p39FAK1008, p39FAK1009, p39FAK1010, p39FAK1011, p39FAK1012, p39FAK1013, p39FAK1014, p39FAK1015, p39FAK1016, p39FAK1017, p39FAK1018, p39FAK1019, p39FAK1020, p39FAK1021, p39FAK1022, p39FAK1023, p39FAK1024, p39FAK1025, p39FAK1026, p39FAK1027, p39FAK1028, p39FAK1029, p39FAK1030, p39FAK1031, p39FAK1032, p39FAK1033, p39FAK1034, p39FAK1035, p39FAK1036, p39FAK1037, p39FAK1038, p39FAK1039, p39FAK1040, p39FAK1041, p39FAK1042, p39FAK1043, p39FAK1044, p39FAK1045, p39FAK1046, p39FAK1047, p39FAK1048, p39FAK1049, p39FAK1050, p39FAK1051, p39FAK1052, p39FAK1053, p39FAK1054, p39FAK1055, p39FAK1056, p39FAK1057, p39FAK1058, p39FAK1059, p39FAK1060, p39FAK1061, p39FAK1062, p39FAK1063, p39FAK1064, p39FAK1065, p39FAK1066, p39FAK1067, p39FAK1068, p39FAK1069, p39FAK1070, p39FAK1071, p39FAK1072, p39FAK1073, p39FAK1074, p39FAK1075, p39FAK1076, p39FAK1077, p39FAK1078, p39FAK1079, p39FAK1080, p39FAK1081, p39FAK1082, p39FAK1083, p39FAK1084, p39FAK1085, p39FAK1086, p39FAK1087, p39FAK1088, p39FAK1089, p39FAK1090, p39FAK1091, p39FAK1092, p39FAK1093, p39FAK1094, p39FAK1095, p39FAK1096, p39FAK1097, p39FAK1098, p39FAK1099, p39FAK1100, p39FAK1101, p39FAK1102, p39FAK1103, p39FAK1104, p39FAK1105, p39FAK1106, p39FAK1107, p39FAK1108, p39FAK1109, p39FAK1110, p39FAK1111, p39FAK1112, p39FAK1113, p39FAK1114, p39FAK1115, p39FAK1116, p39FAK1117, p39FAK1118, p39FAK1119, p39FAK1120, p39FAK1121, p39FAK1122, p39FAK1123, p39FAK1124, p39FAK1125, p39FAK1126, p39FAK1127, p39FAK1128, p39FAK1129, p39FAK1130, p39FAK1131, p39FAK1132, p39FAK1133, p39FAK1134, p39FAK1135, p39FAK1136, p39FAK1137, p39FAK1138, p39FAK1139, p39FAK1140, p39FAK1141, p39FAK1142, p39FAK1143, p39FAK1144, p39FAK1145, p39FAK1146, p39FAK1147, p39FAK1148, p39FAK1149, p39FAK1150, p39FAK1151, p39FAK1152, p39FAK1153, p39FAK1154, p39FAK1155, p39FAK1156, p39FAK1157, p39FAK1158, p39FAK1159, p39FAK1160, p39FAK1161, p39FAK1162, p39FAK1163, p39FAK1164, p39FAK1165, p39FAK1166, p39FAK1167, p39FAK1168, p39FAK1169, p39FAK1170, p39FAK1171, p39FAK1172, p39FAK1173, p39FAK1174, p39FAK1175, p39FAK1176, p39FAK1177, p39FAK1178, p39FAK1179, p39FAK1180, p39FAK1181, p39FAK1182, p39FAK1183, p39FAK1184, p39FAK1185, p39FAK1186, p39FAK1187, p39FAK1188, p39FAK1189, p39FAK1190, p39FAK1191, p39FAK1192, p39FAK1193, p39FAK1194, p39FAK1195, p39FAK1196, p39FAK1197, p39FAK1198, p39FAK1199, p39FAK1200, p39FAK1201, p39FAK1202, p39FAK1203, p39FAK1204, p39FAK1205, p39FAK1206, p39FAK1207, p39FAK1208, p39FAK1209, p39FAK1210, p39FAK1211, p39FAK1212, p39FAK1213, p39FAK1214, p39FAK1215, p39FAK1216, p39FAK1217, p39FAK1218, p39FAK1219, p39FAK1220, p39FAK1221, p39FAK1222, p39FAK1223, p39FAK1224, p39FAK1225, p39FAK1226, p39FAK1227, p39FAK1228, p39FAK1229, p39FAK1230, p39FAK1231, p39FAK1232, p39FAK1233

, 포도당-6-인산 3-포스포탈라제 및 인산 1,3,4,5-테트라산포도당의 인산 고리 D3 위치에 있는 인을 제거하여 시험 내 가장 높은 것은 PtdIns(3,4,5)P3 > PtdIns(3,4)P2 > PtdIns3P > Ins(1,3,4,5)P4 입니다.

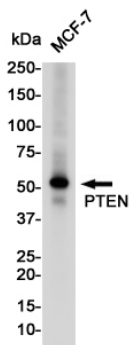
연구 분야

세포 생물학

이미지 데이터



PTEN 항를 사용하여 Raw264.7 세포 용출액에서 PTEN의 웨스턴 블롯 분석을 수행합니다.



PTEN 항를 사용하여 MCF-7 세포 용출액에서 PTEN의 웨스턴 블롯 분석을 수행합니다.