

제품명: KRT14 마우스 단클론 항체

카탈로그 번호: AMM82870

연구용 전용

요약

설명	마우스 단클론 항체
숙주	생쥐
적용	WB, IHC, ICC, ELISA, FC
반응성	인간, 양서류
결합	비결합
변형	수정되지 않음
아이소타입	Mouse IgG1
클론성	단클론
형태	액체
농도	1mg/ml
Storage	Aliquot 하여 -20°C 에 보관(12개월 유효). 냉동/해동 반복을 피하십시오.
Shipping	Ice bags
버퍼	0.05% 아지드나트륨이 함유된 PBS 용액(정제된 항체)
정제	천상정제

적용

희석 비율	WB 1:500-1:2000, IHC 1:200-1:1000, ICC 1:200-1:1000, ELISA 1:5000-1:20000, FC 1:200-1:400
분자량	51.5kDa

항원 정보

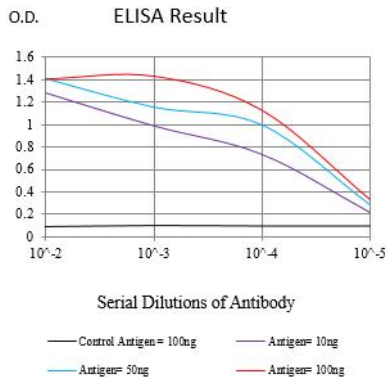
유전자명	KRT14
다른 이름	K14; NFJ; CK14; EBS3; EBS4
유전자 ID	3861.0
SwissProt ID	P02533
면역원	대장에서 발현된 정제된 인간 KRT14 재조합 단백질(아미노산 115-472).

배경

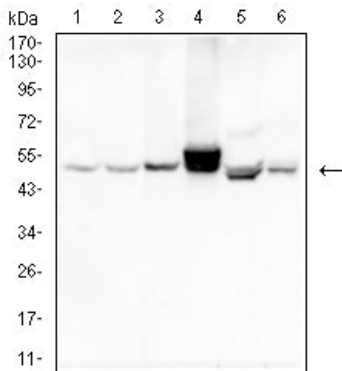
이 유전자는 중추 신경계와 다양한 표피 세포에서 발현되는 양피질 항원이다. 이 유전자는 물제형 항체로 알려진 KRT14, KRT5, KRT15, KRT16, KRT17, KRT18, KRT19, KRT20, KRT21, KRT22, KRT23, KRT24, KRT25, KRT26, KRT27, KRT28, KRT29, KRT30, KRT31, KRT32, KRT33, KRT34, KRT35, KRT36, KRT37, KRT38, KRT39, KRT40, KRT41, KRT42, KRT43, KRT44, KRT45, KRT46, KRT47, KRT48, KRT49, KRT50, KRT51, KRT52, KRT53, KRT54, KRT55, KRT56, KRT57, KRT58, KRT59, KRT60, KRT61, KRT62, KRT63, KRT64, KRT65, KRT66, KRT67, KRT68, KRT69, KRT70, KRT71, KRT72, KRT73, KRT74, KRT75, KRT76, KRT77, KRT78, KRT79, KRT80, KRT81, KRT82, KRT83, KRT84, KRT85, KRT86, KRT87, KRT88, KRT89, KRT90, KRT91, KRT92, KRT93, KRT94, KRT95, KRT96, KRT97, KRT98, KRT99, KRT100, KRT101, KRT102, KRT103, KRT104, KRT105, KRT106, KRT107, KRT108, KRT109, KRT110, KRT111, KRT112, KRT113, KRT114, KRT115, KRT116, KRT117, KRT118, KRT119, KRT120, KRT121, KRT122, KRT123, KRT124, KRT125, KRT126, KRT127, KRT128, KRT129, KRT130, KRT131, KRT132, KRT133, KRT134, KRT135, KRT136, KRT137, KRT138, KRT139, KRT140, KRT141, KRT142, KRT143, KRT144, KRT145, KRT146, KRT147, KRT148, KRT149, KRT150, KRT151, KRT152, KRT153, KRT154, KRT155, KRT156, KRT157, KRT158, KRT159, KRT160, KRT161, KRT162, KRT163, KRT164, KRT165, KRT166, KRT167, KRT168, KRT169, KRT170, KRT171, KRT172, KRT173, KRT174, KRT175, KRT176, KRT177, KRT178, KRT179, KRT180, KRT181, KRT182, KRT183, KRT184, KRT185, KRT186, KRT187, KRT188, KRT189, KRT190, KRT191, KRT192, KRT193, KRT194, KRT195, KRT196, KRT197, KRT198, KRT199, KRT200, KRT201, KRT202, KRT203, KRT204, KRT205, KRT206, KRT207, KRT208, KRT209, KRT210, KRT211, KRT212, KRT213, KRT214, KRT215, KRT216, KRT217, KRT218, KRT219, KRT220, KRT221, KRT222, KRT223, KRT224, KRT225, KRT226, KRT227, KRT228, KRT229, KRT230, KRT231, KRT232, KRT233, KRT234, KRT235, KRT236, KRT237, KRT238, KRT239, KRT240, KRT241, KRT242, KRT243, KRT244, KRT245, KRT246, KRT247, KRT248, KRT249, KRT250, KRT251, KRT252, KRT253, KRT254, KRT255, KRT256, KRT257, KRT258, KRT259, KRT260, KRT261, KRT262, KRT263, KRT264, KRT265, KRT266, KRT267, KRT268, KRT269, KRT270, KRT271, KRT272, KRT273, KRT274, KRT275, KRT276, KRT277, KRT278, KRT279, KRT280, KRT281, KRT282, KRT283, KRT284, KRT285, KRT286, KRT287, KRT288, KRT289, KRT290, KRT291, KRT292, KRT293, KRT294, KRT295, KRT296, KRT297, KRT298, KRT299, KRT300, KRT301, KRT302, KRT303, KRT304, KRT305, KRT306, KRT307, KRT308, KRT309, KRT310, KRT311, KRT312, KRT313, KRT314, KRT315, KRT316, KRT317, KRT318, KRT319, KRT320, KRT321, KRT322, KRT323, KRT324, KRT325, KRT326, KRT327, KRT328, KRT329, KRT330, KRT331, KRT332, KRT333, KRT334, KRT335, KRT336, KRT337, KRT338, KRT339, KRT340, KRT341, KRT342, KRT343, KRT344, KRT345, KRT346, KRT347, KRT348, KRT349, KRT350, KRT351, KRT352, KRT353, KRT354, KRT355, KRT356, KRT357, KRT358, KRT359, KRT360, KRT361, KRT362, KRT363, KRT364, KRT365, KRT366, KRT367, KRT368, KRT369, KRT370, KRT371, KRT372, KRT373, KRT374, KRT375, KRT376, KRT377, KRT378, KRT379, KRT380, KRT381, KRT382, KRT383, KRT384, KRT385, KRT386, KRT387, KRT388, KRT389, KRT390, KRT391, KRT392, KRT393, KRT394, KRT395, KRT396, KRT397, KRT398, KRT399, KRT400, KRT401, KRT402, KRT403, KRT404, KRT405, KRT406, KRT407, KRT408, KRT409, KRT410, KRT411, KRT412, KRT413, KRT414, KRT415, KRT416, KRT417, KRT418, KRT419, KRT420, KRT421, KRT422, KRT423, KRT424, KRT425, KRT426, KRT427, KRT428, KRT429, KRT430, KRT431, KRT432, KRT433, KRT434, KRT435, KRT436, KRT437, KRT438, KRT439, KRT440, KRT441, KRT442, KRT443, KRT444, KRT445, KRT446, KRT447, KRT448, KRT449, KRT450, KRT451, KRT452, KRT453, KRT454, KRT455, KRT456, KRT457, KRT458, KRT459, KRT460, KRT461, KRT462, KRT463, KRT464, KRT465, KRT466, KRT467, KRT468, KRT469, KRT470, KRT471, KRT472, KRT473, KRT474, KRT475, KRT476, KRT477, KRT478, KRT479, KRT480, KRT481, KRT482, KRT483, KRT484, KRT485, KRT486, KRT487, KRT488, KRT489, KRT490, KRT491, KRT492, KRT493, KRT494, KRT495, KRT496, KRT497, KRT498, KRT499, KRT500, KRT501, KRT502, KRT503, KRT504, KRT505, KRT506, KRT507, KRT508, KRT509, KRT510, KRT511, KRT512, KRT513, KRT514, KRT515, KRT516, KRT517, KRT518, KRT519, KRT520, KRT521, KRT522, KRT523, KRT524, KRT525, KRT526, KRT527, KRT528, KRT529, KRT530, KRT531, KRT532, KRT533, KRT534, KRT535, KRT536, KRT537, KRT538, KRT539, KRT540, KRT541, KRT542, KRT543, KRT544, KRT545, KRT546, KRT547, KRT548, KRT549, KRT550, KRT551, KRT552, KRT553, KRT554, KRT555, KRT556, KRT557, KRT558, KRT559, KRT560, KRT561, KRT562, KRT563, KRT564, KRT565, KRT566, KRT567, KRT568, KRT569, KRT570, KRT571, KRT572, KRT573, KRT574, KRT575, KRT576, KRT577, KRT578, KRT579, KRT580, KRT581, KRT582, KRT583, KRT584, KRT585, KRT586, KRT587, KRT588, KRT589, KRT590, KRT591, KRT592, KRT593, KRT594, KRT595, KRT596, KRT597, KRT598, KRT599, KRT600, KRT601, KRT602, KRT603, KRT604, KRT605, KRT606, KRT607, KRT608, KRT609, KRT610, KRT611, KRT612, KRT613, KRT614, KRT615, KRT616, KRT617, KRT618, KRT619, KRT620, KRT621, KRT622, KRT623, KRT624, KRT625, KRT626, KRT627, KRT628, KRT629, KRT630, KRT631, KRT632, KRT633, KRT634, KRT635, KRT636, KRT637, KRT638, KRT639, KRT640, KRT641, KRT642, KRT643, KRT644, KRT645, KRT646, KRT647, KRT648, KRT649, KRT650, KRT651, KRT652, KRT653, KRT654, KRT655, KRT656, KRT657, KRT658, KRT659, KRT660, KRT661, KRT662, KRT663, KRT664, KRT665, KRT666, KRT667, KRT668, KRT669, KRT670, KRT671, KRT672, KRT673, KRT674, KRT675, KRT676, KRT677, KRT678, KRT679, KRT680, KRT681, KRT682, KRT683, KRT684, KRT685, KRT686, KRT687, KRT688, KRT689, KRT690, KRT691, KRT692, KRT693, KRT694, KRT695, KRT696, KRT697, KRT698, KRT699, KRT700, KRT701, KRT702, KRT703, KRT704, KRT705, KRT706, KRT707, KRT708, KRT709, KRT710, KRT711, KRT712, KRT713, KRT714, KRT715, KRT716, KRT717, KRT718, KRT719, KRT720, KRT721, KRT722, KRT723, KRT724, KRT725, KRT726, KRT727, KRT728, KRT729, KRT730, KRT731, KRT732, KRT733, KRT734, KRT735, KRT736, KRT737, KRT738, KRT739, KRT740, KRT741, KRT742, KRT743, KRT744, KRT745, KRT746, KRT747, KRT748, KRT749, KRT750, KRT751, KRT752, KRT753, KRT754, KRT755, KRT756, KRT757, KRT758, KRT759, KRT760, KRT761, KRT762, KRT763, KRT764, KRT765, KRT766, KRT767, KRT768, KRT769, KRT770, KRT771, KRT772, KRT773, KRT774, KRT775, KRT776, KRT777, KRT778, KRT779, KRT780, KRT781, KRT782, KRT783, KRT784, KRT785, KRT786, KRT787, KRT788, KRT789, KRT790, KRT791, KRT792, KRT793, KRT794, KRT795, KRT796, KRT797, KRT798, KRT799, KRT800, KRT801, KRT802, KRT803, KRT804, KRT805, KRT806, KRT807, KRT808, KRT809, KRT810, KRT811, KRT812, KRT813, KRT814, KRT815, KRT816, KRT817, KRT818, KRT819, KRT820, KRT821, KRT822, KRT823, KRT824, KRT825, KRT826, KRT827, KRT828, KRT829, KRT830, KRT831, KRT832, KRT833, KRT834, KRT835, KRT836, KRT837, KRT838, KRT839, KRT840, KRT841, KRT842, KRT843, KRT844, KRT845, KRT846, KRT847, KRT848, KRT849, KRT850, KRT851, KRT852, KRT853, KRT854, KRT855, KRT856, KRT857, KRT858, KRT859, KRT860, KRT861, KRT862, KRT863, KRT864, KRT865, KRT866, KRT867, KRT868, KRT869, KRT870, KRT871, KRT872, KRT873, KRT874, KRT875, KRT876, KRT877, KRT878, KRT879, KRT880, KRT881, KRT882, KRT883, KRT884, KRT885, KRT886, KRT887, KRT888, KRT889, KRT890, KRT891, KRT892, KRT893, KRT894, KRT895, KRT896, KRT897, KRT898, KRT899, KRT900, KRT901, KRT902, KRT903, KRT904, KRT905, KRT906, KRT907, KRT908, KRT909, KRT910, KRT911, KRT912, KRT913, KRT914, KRT915, KRT916, KRT917, KRT918, KRT919, KRT920, KRT921, KRT922, KRT923, KRT924, KRT925, KRT926, KRT927, KRT928, KRT929, KRT930, KRT931, KRT932, KRT933, KRT934, KRT935, KRT936, KRT937, KRT938, KRT939, KRT940, KRT941, KRT942, KRT943, KRT944, KRT945, KRT946, KRT947, KRT948, KRT949, KRT950, KRT951, KRT952, KRT953, KRT954, KRT955, KRT956, KRT957, KRT958, KRT959, KRT960, KRT961, KRT962, KRT963, KRT964, KRT965, KRT966, KRT967, KRT968, KRT969, KRT970, KRT971, KRT972, KRT973, KRT974, KRT975, KRT976, KRT977, KRT978, KRT979, KRT980, KRT981, KRT982, KRT983, KRT984, KRT985, KRT986, KRT987, KRT988, KRT989, KRT990, KRT991, KRT992, KRT993, KRT994, KRT995, KRT996, KRT997, KRT998, KRT999, KRT1000, KRT1001, KRT1002, KRT1003, KRT1004, KRT1005, KRT1006, KRT1007, KRT1008, KRT1009, KRT1010, KRT1011, KRT1012, KRT1013, KRT1014, KRT1015, KRT1016, KRT1017, KRT1018, KRT1019, KRT1020, KRT1021, KRT1022, KRT1023, KRT1024, KRT1025, KRT1026, KRT1027, KRT1028, KRT1029, KRT1030, KRT1031, KRT1032, KRT1033, KRT1034, KRT1035, KRT1036, KRT1037, KRT1038, KRT1039, KRT1040, KRT1041, KRT1042, KRT1043, KRT1044, KRT1045, KRT1046, KRT1047, KRT1048, KRT1049, KRT1050, KRT1051, KRT1052, KRT1053, KRT1054, KRT1055, KRT1056, KRT1057, KRT1058, KRT1059, KRT1060, KRT1061, KRT1062, KRT1063, KRT1064, KRT1065, KRT1066, KRT1067, KRT1068, KRT1069, KRT1070, KRT1071, KRT1072, KRT1073, KRT1074, KRT1075, KRT1076, KRT1077, KRT1078, KRT1079, KRT1080, KRT1081, KRT1082, KRT1083, KRT1084, KRT1085, KRT1086, KRT1087, KRT1088, KRT1089, KRT1090, KRT1091, KRT1092, KRT1093, KRT1094, KRT1095, KRT1096, KRT1097, KRT1098, KRT1099, KRT1100, KRT1101, KRT1102, KRT1103, KRT1104, KRT1105, KRT1106, KRT1107, KRT1108, KRT1109, KRT1110, KRT1111, KRT1112, KRT1113, KRT1114, KRT1115, KRT1116, KRT1117, KRT1118, KRT1119, KRT1120, KRT1121, KRT1122, KRT1123, KRT1124, KRT1125, KRT1126, KRT1127, KRT1128, KRT1129, KRT1130, KRT1131, KRT1132, KRT1133, KRT1134, KRT1135, KRT1136, KRT1137, KRT1138, KRT1139, KRT1140, KRT1141, KRT1142, KRT1143, KRT1144, KRT1145, KRT1146, KRT1147, KRT1148, KRT1149, KRT1150, KRT1151, KRT1152, KRT1153, KRT1154, KRT1155, KRT1156, KRT1157, KRT1158, KRT1159, KRT1160, KRT1161, KRT1162, KRT1163, KRT1164, KRT1165, KRT1166, KRT1167, KRT1168, KRT1169, KRT1170, KRT1171, KRT1172, KRT1173, KRT1174, KRT1175, KRT1176, KRT1177, KRT1178, KRT1179, KRT1180, KRT1181, KRT1182, KRT1183, KRT1184, KRT1185, KRT1186, KRT1187, KRT1188, KRT1189, KRT1190, KRT1191, KRT1192, KRT1193, KRT1194, KRT1195, KRT1196, KRT1197, KRT1198, KRT1199, KRT1200, KRT1201, KRT1202, KRT1203, KRT1204, KRT1205, KRT1206, KRT1207, KRT1208, KRT1209, KRT1210, KRT1211, KRT1212, KRT1213, KRT1214, KRT1215, KRT1216, KRT1217, KRT1218, KRT1219, KRT1220, KRT1221, KRT1222, KRT1223, KRT1224, KRT1225, KRT1226, KRT1227, KRT1228, KRT1229, KRT1230, KRT1231, KRT1232, KRT1233, KRT1234, KRT1235, KRT1236, KRT1237, KRT1238, KRT1239, KRT1240, KRT1241, KRT1242, KRT1243, KRT1244, KRT1245, KRT1246, KRT1247, KRT1248, KRT1249, KRT1250, KRT1251, KRT1252, KRT1253, KRT1254, KRT1255, KRT1256, KRT1257, KRT1258, KRT1259, KRT1260, KRT1261, KRT1262, KRT1263, KRT1264, KRT1265, KRT1266, KRT1267, KRT1268, KRT1269, KRT1270, KRT1271, KRT1272, KRT1273, KRT1274, KRT1275, KRT1276, KRT1277, KRT1278, KRT1279, KRT1280, KRT1281, KRT1282, KRT1283, KRT1284, KRT1285, KRT1286, KRT1287, KRT1288, KRT1289, KRT1290, KRT1291, KRT1292, KRT1293, KRT1294, KRT1295, KRT1296, KRT1297, KRT1298, KRT1299, KRT1300, KRT1301, KRT1302, KRT1303, KRT1304, KRT1305, KRT1306, KRT1307, KRT1308, KRT1309, KRT1310, KRT1311, KRT1312, KRT1313, KRT1314, KRT1315, KRT1316, KRT1317, KRT1318, KRT1319, KRT1320, KRT1321, KRT1322, KRT1323, KRT1324, KRT1325, KRT1326, KRT1327, KRT1328, KRT1329, KRT1330, KRT1331, KRT1332, KRT1333, KRT1334, KRT1335, KRT1336, KRT1337, KRT1338, KRT1339, KRT1340, KRT1341, KRT1342, KRT1343, KRT1344, KRT1345, KRT1346, KRT1347, KRT1348, KRT1349, KRT1350, KRT1351, KRT1352, KRT1353, KRT1354, KRT1355, KRT1356, KRT1357, KRT1358, KRT1359, KRT1360, KRT1361, KRT1362, KRT1363, KRT1364, KRT1365, KRT1366, KRT1367, KRT1368, KRT1369, KRT1370, KRT1371, KRT1372, KRT1373, KRT1374, KRT1375, KRT1376, KRT1377, KRT1378, KRT1379, KRT1380, KRT1381, KRT1382, KRT1383, KRT1384, KRT1385, KRT1386, KRT1387, KRT1388, KRT1389, KRT1390, KRT1391, KRT1392, KRT1393, KRT1394, KRT1395, KRT1396, KRT1397, KRT1398, KRT1399, KRT1400, KRT1401, KRT1402, KRT1403, KRT1404, KRT1405, KRT1406, KRT1407, KRT1408, KRT1409, KRT1410, KRT1411, KRT1412, KRT1413, KRT1414, KRT1415, KRT1416, KRT1417, KRT1418, KRT1419, KRT1420, KRT1421, KRT1422, KRT1423, KRT1424, KRT1425, KRT1426, KRT1427, KRT1428, KRT1429, KRT1430, KRT1431, KRT1432, KRT1433, KRT1434, KRT1435, KRT1436, KRT1437, KRT1438, KRT1439, KRT1440, KRT1441, KRT1442, KRT1443, KRT1444, KRT1445, KRT1446, KRT1447, KRT1448, KRT1449, KRT1450, KRT1451, KRT1452, KRT1453, KRT1454, KRT1455, KRT1456, KRT1457, KRT1458, KRT1459, KRT1460, KRT1461, KRT1462, KRT1463, KRT1464, KRT1465, KRT1466, KRT1467, KRT1468, KRT1469, KRT1470, KRT1471, KRT1472, KRT1473, KRT1474, KRT1475, KRT1476, KRT1477, KRT1478, KRT1479, KRT1480, KRT1481, KRT1482, KRT1483, KRT1484, KRT1485, KRT1486, KRT1487, KRT1488, KRT1489, KRT1490, KRT1491, KRT1492, KRT1493, KRT1494, KRT1495, KRT1496, KRT1497, KRT1498, KRT1499, KRT1500, KRT1501, KRT1502, KRT1503, KRT1504, KRT1505, KRT1506, KRT1507, KRT1508, KRT1509, KRT1510, KRT1511, KRT1512, KRT1513, KRT1514, KRT1515, KRT1516, KRT1517, KRT1518, KRT1519, KRT1520, KRT1521, KRT1522, KRT1523, KRT1524, KRT1525, KRT1526, KRT1527, KRT1528, KRT1529, KRT1530, KRT1531, KRT1532, KRT1533, KRT1534, KRT1535, KRT1536, KRT1537, KRT1538, KRT1539, KRT1540, KRT1541, KRT1542, KRT1543, KRT1544, KRT1545, KRT1546, KRT1547, KRT1548, KRT1549, KRT1550, KRT1551, KRT1552, KRT1553, KRT1554, KRT1555, KRT1556, KRT1557, KRT1558, KRT1559, KRT1560, KRT1561, KRT1562, KRT1563, KRT1564, KRT1565, KRT1566, KRT1567, KRT1568, KRT1569, KRT1570, KRT1571, KRT1572, KRT1573, KRT1574, KRT1575, KRT1576, KRT1577, KRT1578, KRT1579, KRT1580, KRT1581, KRT1582, KRT1583, KRT1584, KRT1585, KRT1586, KRT1587, KRT1588, KRT1589, KRT1590, KRT1591, KRT1592, KRT1593, KRT1594, KRT1595, KRT1596, KRT1597, KRT1598, KRT1599, KRT1600, KRT1601, KRT1602, KRT1603, KRT1604, KRT1605, KRT1606, KRT1607, KRT1608, KRT1609, KRT1610, KRT1611, KRT1612, KRT1613, KRT1614, KRT1615, KRT1616, KRT1617, KRT1618, KRT1619, KRT1620, KRT1621, KRT1622, KRT1623, KRT1624, KRT1625, KRT1626, KRT1627, KRT1628, KRT1629, KRT1630, KRT1631, KRT1632, KRT1633, KRT1634, KRT1635, KRT1636, KRT1637, KRT1638, KRT1639, KRT1640, KRT1641, KRT1642, KRT1643, KRT1644, KRT1645, KRT1646, KRT1647, KRT1648, KRT1649, KRT1650, KRT1651, KRT1652, KRT1653, KRT1654, KRT1655, KRT1656, KRT1657, KRT1658, KRT1659, KRT1660, KRT1661, KRT1662, KRT1663, KRT1664, KRT1665, KRT1666, KRT1667, KRT1668, KRT1669, KRT1670, KRT1671, KRT1672, KRT1673, KRT1674, KRT1675, KRT1676, KRT1677, KRT1678, KRT1679, KRT1680, KRT1681, KRT1682, KRT1683, KRT1684, KRT1685, KRT1686, KRT1687, KRT1688, KRT1689, KRT1690, KRT1691, KRT1692, KRT1693, KRT1694, KRT1695, KRT1696, KRT1697, KRT1698, KRT1699, KRT1700, KRT1701, KRT1702, KRT1703, KRT1704, KRT1705, KRT1706, KRT1707, KRT1708, KRT1709, KRT1710, KRT1711, KRT1712, KRT1713, KRT1714, KRT1715, KRT1716, KRT1717, KRT1718, KRT1719, KRT1720, KRT1721, KRT1722, KRT1723, KRT1724, KRT1725, KRT1726, KRT1727, KRT1728, KRT1729, KRT1730, KRT1731, KRT1732, KRT1733, KRT1734, KRT1735, KRT1736, KRT1737, KRT1738, KRT1739, KRT1740, KRT1741, KRT1742, KRT1743, KRT1744, KRT1745, KRT1746, KRT1747, KRT1748, KRT1749, KRT1750, KRT1751, KRT1752, KRT1753, KRT1754, KRT1755, KRT1756, KRT1757, KRT1758, KRT1759, KRT1760, KRT1761, KRT1762, KRT1763, KRT1764, KRT1765, KRT1766, KRT1767, KRT1768, KRT1769, KRT1770, KRT1771, KRT1772, KRT1773, KRT1774, KRT1775, KRT1776, KRT1777, K

연구 분야

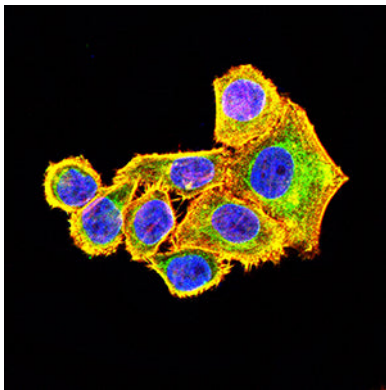
이미지 데이터



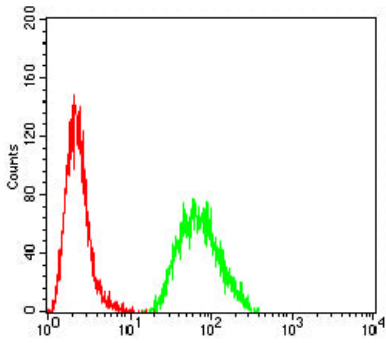
검색선 대항원(100ng); 보색선 항원(10ng); 파색선 항원(50ng); 빨색선 항원(100ng)



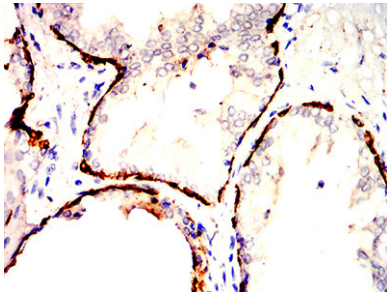
MCF-7(1), HeLa(2), A431(3), SW480(4), T47D(5) 및 Molt-4(6) 세포종에 대한 KRT14 마우스 mAb를 사용하여 Western blot 분석



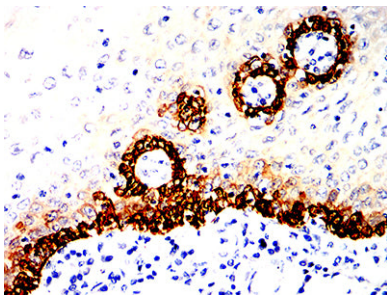
KRT14 마우스 monoclonal antibody를 이용한 HeLa 세포 면역형광 분석. 파색 DRAQ5 형광 DNA 염료 빨색 액틴 단백질은 Alexa Fluor-555 필라민으로 표지했다.



KRT14 마우스 특항체(부위용) 대군 발색을 사용하여 HeLa 세포를 유세포분석기로 분석한 결과



KRT14 마우스 특항체(DAB 염색) 용인 근피막내인 생식관 조직의 면역조직화학 분석



KRT14 마우스 특항체(DAB 염색) 용인 근피막내인 생식관 조직의 면역조직화학 분석