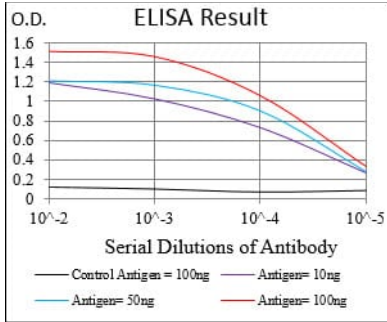
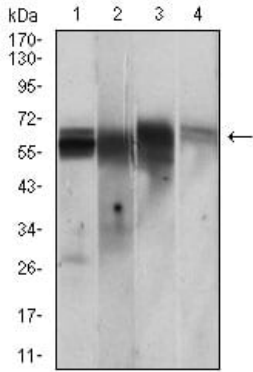


연구 분야

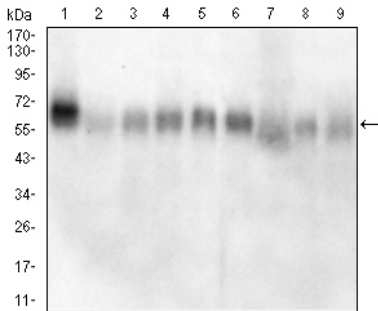
이미지 데이터



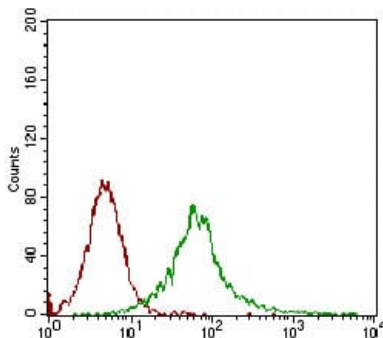
검색선 대항원(100ng); 보색선 항원(10ng); 파색선 항원(50ng); 빨색선 항원(100ng);



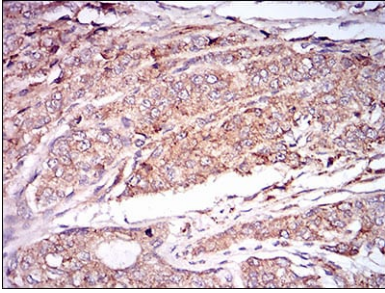
PC-12(1), Jurkat(2), T47D(3), HepG2(4) 세포용질에 대한 CAMK2G 마우스 mAb 를 사용하여 Western blot 분석



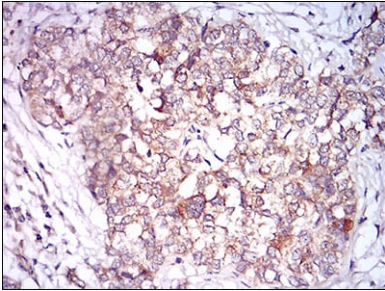
PC-12(1)Raw264.7(2)NIH/3T3(3) NRK(4) C2C12(5)C6(6)F9(7)COS-7(8)CHO3D10(9) 세포용질에 대한 CAMK2G 마우스 mAb 를 사용하여 Western blot 분석



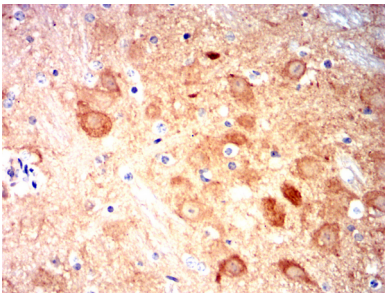
CAMK2G 마우스 단클론항(녹색)와 음성 대조군(빨색)을 사용하여 Jurkat 세포를 유세포분석법으로 분석한 결과



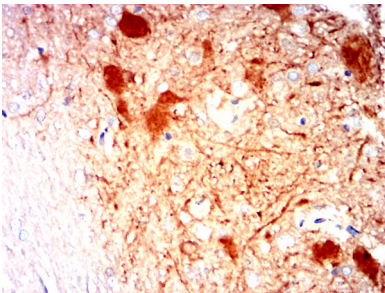
파면이포된인간척추염좌에대한CAMK2G 마우스를형체DAB 염색이용한면역조직화분석



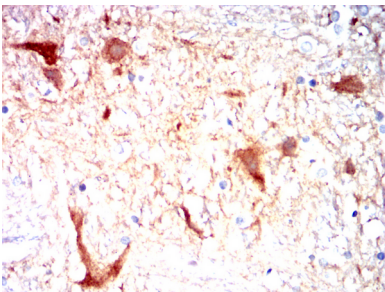
파면이포된인간척추염좌에대한CAMK2G 마우스를형체DAB 염색이용한면역조직화분석



파면이포된마우스에대한면역조직화분석CAMK2G 마우스를형체DAB 염색이용



파면이포된주스에대한면역조직화분석CAMK2G 마우스를형체DAB 염색이용



파면이포된로키척추염좌에CAMK2G 마우스를형체DAB 염색이용한면역조직화분석을실하였다