

제품명: EPHB4 마우스 단클론 항체

카탈로그 번호: AMM80729

연구용 전용

요약

설명	마우스 단클론 항체
숙주	생쥐
적용	ICC, ELISA
반응성	인간
결합	비결합
변형	수정치 없음
아이소타입	Mouse IgG1
클론성	단클론
형태	액체
농도	1mg/ml
Storage	Aliquot 하여 -20°C 에 보관(12개월 유효). 냉동/해동 반복을 피하십시오.
Shipping	Ice bags
버퍼	0.05% 아지드 부동액 함유된 PBS 용해정된 항체
정제	천상정제

적용

희석 비율	ICC 1:200-1:1000, ELISA 1:5000-1:20000
분자량	108kDa

항원 정보

유전자명	EPHB4
다른 이름	HTK; MYK1; TYRO11
유전자 ID	2050.0
SwissProt ID	P54760
면역원	정제된 재조합인 EPHB4 세포외도메인 IgGFc 태그를 용해하여 HEK293 세포에서 발효했습니다.

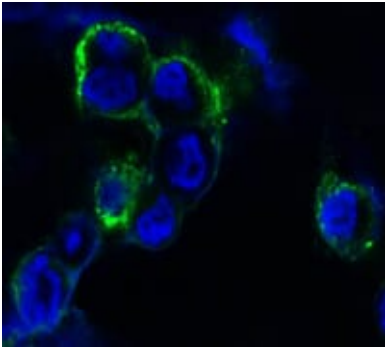
배경

EphB4: Eph 수용체 B4는 Htk, Myk1, Tyro11로 알려져 있습니다. Entrez 데이터베이스 NP_004435. 이 단백질은 EPHB4 유전자에서 발현되며, 다른 근 및 열관계를 따라 리글리안과 유사한 구조를 가진 EPHB2, EPHB3, EPHB4, EPHB5, EPHB6, EPHB7, EPHB8, EPHB9, EPHB10, EPHB11, EPHB12, EPHB13, EPHB14, EPHB15, EPHB16, EPHB17, EPHB18, EPHB19, EPHB20, EPHB21, EPHB22, EPHB23, EPHB24, EPHB25, EPHB26, EPHB27, EPHB28, EPHB29, EPHB30, EPHB31, EPHB32, EPHB33, EPHB34, EPHB35, EPHB36, EPHB37, EPHB38, EPHB39, EPHB40, EPHB41, EPHB42, EPHB43, EPHB44, EPHB45, EPHB46, EPHB47, EPHB48, EPHB49, EPHB50, EPHB51, EPHB52, EPHB53, EPHB54, EPHB55, EPHB56, EPHB57, EPHB58, EPHB59, EPHB60, EPHB61, EPHB62, EPHB63, EPHB64, EPHB65, EPHB66, EPHB67, EPHB68, EPHB69, EPHB70, EPHB71, EPHB72, EPHB73, EPHB74, EPHB75, EPHB76, EPHB77, EPHB78, EPHB79, EPHB80, EPHB81, EPHB82, EPHB83, EPHB84, EPHB85, EPHB86, EPHB87, EPHB88, EPHB89, EPHB90, EPHB91, EPHB92, EPHB93, EPHB94, EPHB95, EPHB96, EPHB97, EPHB98, EPHB99, EPHB100, EPHB101, EPHB102, EPHB103, EPHB104, EPHB105, EPHB106, EPHB107, EPHB108, EPHB109, EPHB110, EPHB111, EPHB112, EPHB113, EPHB114, EPHB115, EPHB116, EPHB117, EPHB118, EPHB119, EPHB120, EPHB121, EPHB122, EPHB123, EPHB124, EPHB125, EPHB126, EPHB127, EPHB128, EPHB129, EPHB130, EPHB131, EPHB132, EPHB133, EPHB134, EPHB135, EPHB136, EPHB137, EPHB138, EPHB139, EPHB140, EPHB141, EPHB142, EPHB143, EPHB144, EPHB145, EPHB146, EPHB147, EPHB148, EPHB149, EPHB150, EPHB151, EPHB152, EPHB153, EPHB154, EPHB155, EPHB156, EPHB157, EPHB158, EPHB159, EPHB160, EPHB161, EPHB162, EPHB163, EPHB164, EPHB165, EPHB166, EPHB167, EPHB168, EPHB169, EPHB170, EPHB171, EPHB172, EPHB173, EPHB174, EPHB175, EPHB176, EPHB177, EPHB178, EPHB179, EPHB180, EPHB181, EPHB182, EPHB183, EPHB184, EPHB185, EPHB186, EPHB187, EPHB188, EPHB189, EPHB190, EPHB191, EPHB192, EPHB193, EPHB194, EPHB195, EPHB196, EPHB197, EPHB198, EPHB199, EPHB200, EPHB201, EPHB202, EPHB203, EPHB204, EPHB205, EPHB206, EPHB207, EPHB208, EPHB209, EPHB210, EPHB211, EPHB212, EPHB213, EPHB214, EPHB215, EPHB216, EPHB217, EPHB218, EPHB219, EPHB220, EPHB221, EPHB222, EPHB223, EPHB224, EPHB225, EPHB226, EPHB227, EPHB228, EPHB229, EPHB230, EPHB231, EPHB232, EPHB233, EPHB234, EPHB235, EPHB236, EPHB237, EPHB238, EPHB239, EPHB240, EPHB241, EPHB242, EPHB243, EPHB244, EPHB245, EPHB246, EPHB247, EPHB248, EPHB249, EPHB250, EPHB251, EPHB252, EPHB253, EPHB254, EPHB255, EPHB256, EPHB257, EPHB258, EPHB259, EPHB260, EPHB261, EPHB262, EPHB263, EPHB264, EPHB265, EPHB266, EPHB267, EPHB268, EPHB269, EPHB270, EPHB271, EPHB272, EPHB273, EPHB274, EPHB275, EPHB276, EPHB277, EPHB278, EPHB279, EPHB280, EPHB281, EPHB282, EPHB283, EPHB284, EPHB285, EPHB286, EPHB287, EPHB288, EPHB289, EPHB290, EPHB291, EPHB292, EPHB293, EPHB294, EPHB295, EPHB296, EPHB297, EPHB298, EPHB299, EPHB300, EPHB301, EPHB302, EPHB303, EPHB304, EPHB305, EPHB306, EPHB307, EPHB308, EPHB309, EPHB310, EPHB311, EPHB312, EPHB313, EPHB314, EPHB315, EPHB316, EPHB317, EPHB318, EPHB319, EPHB320, EPHB321, EPHB322, EPHB323, EPHB324, EPHB325, EPHB326, EPHB327, EPHB328, EPHB329, EPHB330, EPHB331, EPHB332, EPHB333, EPHB334, EPHB335, EPHB336, EPHB337, EPHB338, EPHB339, EPHB340, EPHB341, EPHB342, EPHB343, EPHB344, EPHB345, EPHB346, EPHB347, EPHB348, EPHB349, EPHB350, EPHB351, EPHB352, EPHB353, EPHB354, EPHB355, EPHB356, EPHB357, EPHB358, EPHB359, EPHB360, EPHB361, EPHB362, EPHB363, EPHB364, EPHB365, EPHB366, EPHB367, EPHB368, EPHB369, EPHB370, EPHB371, EPHB372, EPHB373, EPHB374, EPHB375, EPHB376, EPHB377, EPHB378, EPHB379, EPHB380, EPHB381, EPHB382, EPHB383, EPHB384, EPHB385, EPHB386, EPHB387, EPHB388, EPHB389, EPHB390, EPHB391, EPHB392, EPHB393, EPHB394, EPHB395, EPHB396, EPHB397, EPHB398, EPHB399, EPHB400, EPHB401, EPHB402, EPHB403, EPHB404, EPHB405, EPHB406, EPHB407, EPHB408, EPHB409, EPHB410, EPHB411, EPHB412, EPHB413, EPHB414, EPHB415, EPHB416, EPHB417, EPHB418, EPHB419, EPHB420, EPHB421, EPHB422, EPHB423, EPHB424, EPHB425, EPHB426, EPHB427, EPHB428, EPHB429, EPHB430, EPHB431, EPHB432, EPHB433, EPHB434, EPHB435, EPHB436, EPHB437, EPHB438, EPHB439, EPHB440, EPHB441, EPHB442, EPHB443, EPHB444, EPHB445, EPHB446, EPHB447, EPHB448, EPHB449, EPHB450, EPHB451, EPHB452, EPHB453, EPHB454, EPHB455, EPHB456, EPHB457, EPHB458, EPHB459, EPHB460, EPHB461, EPHB462, EPHB463, EPHB464, EPHB465, EPHB466, EPHB467, EPHB468, EPHB469, EPHB470, EPHB471, EPHB472, EPHB473, EPHB474, EPHB475, EPHB476, EPHB477, EPHB478, EPHB479, EPHB480, EPHB481, EPHB482, EPHB483, EPHB484, EPHB485, EPHB486, EPHB487, EPHB488, EPHB489, EPHB490, EPHB491, EPHB492, EPHB493, EPHB494, EPHB495, EPHB496, EPHB497, EPHB498, EPHB499, EPHB500, EPHB501, EPHB502, EPHB503, EPHB504, EPHB505, EPHB506, EPHB507, EPHB508, EPHB509, EPHB510, EPHB511, EPHB512, EPHB513, EPHB514, EPHB515, EPHB516, EPHB517, EPHB518, EPHB519, EPHB520, EPHB521, EPHB522, EPHB523, EPHB524, EPHB525, EPHB526, EPHB527, EPHB528, EPHB529, EPHB530, EPHB531, EPHB532, EPHB533, EPHB534, EPHB535, EPHB536, EPHB537, EPHB538, EPHB539, EPHB540, EPHB541, EPHB542, EPHB543, EPHB544, EPHB545, EPHB546, EPHB547, EPHB548, EPHB549, EPHB550, EPHB551, EPHB552, EPHB553, EPHB554, EPHB555, EPHB556, EPHB557, EPHB558, EPHB559, EPHB560, EPHB561, EPHB562, EPHB563, EPHB564, EPHB565, EPHB566, EPHB567, EPHB568, EPHB569, EPHB570, EPHB571, EPHB572, EPHB573, EPHB574, EPHB575, EPHB576, EPHB577, EPHB578, EPHB579, EPHB580, EPHB581, EPHB582, EPHB583, EPHB584, EPHB585, EPHB586, EPHB587, EPHB588, EPHB589, EPHB590, EPHB591, EPHB592, EPHB593, EPHB594, EPHB595, EPHB596, EPHB597, EPHB598, EPHB599, EPHB600, EPHB601, EPHB602, EPHB603, EPHB604, EPHB605, EPHB606, EPHB607, EPHB608, EPHB609, EPHB610, EPHB611, EPHB612, EPHB613, EPHB614, EPHB615, EPHB616, EPHB617, EPHB618, EPHB619, EPHB620, EPHB621, EPHB622, EPHB623, EPHB624, EPHB625, EPHB626, EPHB627, EPHB628, EPHB629, EPHB630, EPHB631, EPHB632, EPHB633, EPHB634, EPHB635, EPHB636, EPHB637, EPHB638, EPHB639, EPHB640, EPHB641, EPHB642, EPHB643, EPHB644, EPHB645, EPHB646, EPHB647, EPHB648, EPHB649, EPHB650, EPHB651, EPHB652, EPHB653, EPHB654, EPHB655, EPHB656, EPHB657, EPHB658, EPHB659, EPHB660, EPHB661, EPHB662, EPHB663, EPHB664, EPHB665, EPHB666, EPHB667, EPHB668, EPHB669, EPHB670, EPHB671, EPHB672, EPHB673, EPHB674, EPHB675, EPHB676, EPHB677, EPHB678, EPHB679, EPHB680, EPHB681, EPHB682, EPHB683, EPHB684, EPHB685, EPHB686, EPHB687, EPHB688, EPHB689, EPHB690, EPHB691, EPHB692, EPHB693, EPHB694, EPHB695, EPHB696, EPHB697, EPHB698, EPHB699, EPHB700, EPHB701, EPHB702, EPHB703, EPHB704, EPHB705, EPHB706, EPHB707, EPHB708, EPHB709, EPHB710, EPHB711, EPHB712, EPHB713, EPHB714, EPHB715, EPHB716, EPHB717, EPHB718, EPHB719, EPHB720, EPHB721, EPHB722, EPHB723, EPHB724, EPHB725, EPHB726, EPHB727, EPHB728, EPHB729, EPHB730, EPHB731, EPHB732, EPHB733, EPHB734, EPHB735, EPHB736, EPHB737, EPHB738, EPHB739, EPHB740, EPHB741, EPHB742, EPHB743, EPHB744, EPHB745, EPHB746, EPHB747, EPHB748, EPHB749, EPHB750, EPHB751, EPHB752, EPHB753, EPHB754, EPHB755, EPHB756, EPHB757, EPHB758, EPHB759, EPHB760, EPHB761, EPHB762, EPHB763, EPHB764, EPHB765, EPHB766, EPHB767, EPHB768, EPHB769, EPHB770, EPHB771, EPHB772, EPHB773, EPHB774, EPHB775, EPHB776, EPHB777, EPHB778, EPHB779, EPHB780, EPHB781, EPHB782, EPHB783, EPHB784, EPHB785, EPHB786, EPHB787, EPHB788, EPHB789, EPHB790, EPHB791, EPHB792, EPHB793, EPHB794, EPHB795, EPHB796, EPHB797, EPHB798, EPHB799, EPHB800, EPHB801, EPHB802, EPHB803, EPHB804, EPHB805, EPHB806, EPHB807, EPHB808, EPHB809, EPHB810, EPHB811, EPHB812, EPHB813, EPHB814, EPHB815, EPHB816, EPHB817, EPHB818, EPHB819, EPHB820, EPHB821, EPHB822, EPHB823, EPHB824, EPHB825, EPHB826, EPHB827, EPHB828, EPHB829, EPHB830, EPHB831, EPHB832, EPHB833, EPHB834, EPHB835, EPHB836, EPHB837, EPHB838, EPHB839, EPHB840, EPHB841, EPHB842, EPHB843, EPHB844, EPHB845, EPHB846, EPHB847, EPHB848, EPHB849, EPHB850, EPHB851, EPHB852, EPHB853, EPHB854, EPHB855, EPHB856, EPHB857, EPHB858, EPHB859, EPHB860, EPHB861, EPHB862, EPHB863, EPHB864, EPHB865, EPHB866, EPHB867, EPHB868, EPHB869, EPHB870, EPHB871, EPHB872, EPHB873, EPHB874, EPHB875, EPHB876, EPHB877, EPHB878, EPHB879, EPHB880, EPHB881, EPHB882, EPHB883, EPHB884, EPHB885, EPHB886, EPHB887, EPHB888, EPHB889, EPHB890, EPHB891, EPHB892, EPHB893, EPHB894, EPHB895, EPHB896, EPHB897, EPHB898, EPHB899, EPHB900, EPHB901, EPHB902, EPHB903, EPHB904, EPHB905, EPHB906, EPHB907, EPHB908, EPHB909, EPHB910, EPHB911, EPHB912, EPHB913, EPHB914, EPHB915, EPHB916, EPHB917, EPHB918, EPHB919, EPHB920, EPHB921, EPHB922, EPHB923, EPHB924, EPHB925, EPHB926, EPHB927, EPHB928, EPHB929, EPHB930, EPHB931, EPHB932, EPHB933, EPHB934, EPHB935, EPHB936, EPHB937, EPHB938, EPHB939, EPHB940, EPHB941, EPHB942, EPHB943, EPHB944, EPHB945, EPHB946, EPHB947, EPHB948, EPHB949, EPHB950, EPHB951, EPHB952, EPHB953, EPHB954, EPHB955, EPHB956, EPHB957, EPHB958, EPHB959, EPHB960, EPHB961, EPHB962, EPHB963, EPHB964, EPHB965, EPHB966, EPHB967, EPHB968, EPHB969, EPHB970, EPHB971, EPHB972, EPHB973, EPHB974, EPHB975, EPHB976, EPHB977, EPHB978, EPHB979, EPHB980, EPHB981, EPHB982, EPHB983, EPHB984, EPHB985, EPHB986, EPHB987, EPHB988, EPHB989, EPHB990, EPHB991, EPHB992, EPHB993, EPHB994, EPHB995, EPHB996, EPHB997, EPHB998, EPHB999, EPHB1000, EPHB1001, EPHB1002, EPHB1003, EPHB1004, EPHB1005, EPHB1006, EPHB1007, EPHB1008, EPHB1009, EPHB1010, EPHB1011, EPHB1012, EPHB1013, EPHB1014, EPHB1015, EPHB1016, EPHB1017, EPHB1018, EPHB1019, EPHB1020, EPHB1021, EPHB1022, EPHB1023, EPHB1024, EPHB1025, EPHB1026, EPHB1027, EPHB1028, EPHB1029, EPHB1030, EPHB1031, EPHB1032, EPHB1033, EPHB1034, EPHB1035, EPHB1036, EPHB1037, EPHB1038, EPHB1039, EPHB1040, EPHB1041, EPHB1042, EPHB1043, EPHB1044, EPHB1045, EPHB1046, EPHB1047, EPHB1048, EPHB1049, EPHB1050, EPHB1051, EPHB1052, EPHB1053, EPHB1054, EPHB1055, EPHB1056, EPHB1057, EPHB1058, EPHB1059, EPHB1060, EPHB1061, EPHB1062, EPHB1063, EPHB1064, EPHB1065, EPHB1066, EPHB1067, EPHB1068, EPHB1069, EPHB1070, EPHB1071, EPHB1072, EPHB1073, EPHB1074, EPHB1075, EPHB1076, EPHB1077, EPHB1078, EPHB1079, EPHB1080, EPHB1081, EPHB1082, EPHB1083, EPHB1084, EPHB1085, EPHB1086, EPHB1087, EPHB1088, EPHB1089, EPHB1090, EPHB1091, EPHB1092, EPHB1093, EPHB1094, EPHB1095, EPHB1096, EPHB1097, EPHB1098, EPHB1099, EPHB1100, EPHB1101, EPHB1102, EPHB1103, EPHB1104, EPHB1105, EPHB1106, EPHB1107, EPHB1108, EPHB1109, EPHB1110, EPHB1111, EPHB1112, EPHB1113, EPHB1114, EPHB1115, EPHB1116, EPHB1117, EPHB1118, EPHB1119, EPHB1120, EPHB1121, EPHB1122, EPHB1123, EPHB1124, EPHB1125, EPHB1126, EPHB1127, EPHB1128, EPHB1129, EPHB1130, EPHB1131, EPHB1132, EPHB1133, EPHB1134, EPHB1135, EPHB1136, EPHB1137, EPHB1138, EPHB1139, EPHB1140, EPHB1141, EPHB1142, EPHB1143, EPHB1144, EPHB1145, EPHB1146, EPHB1147, EPHB1148, EPHB1149, EPHB1150, EPHB1151, EPHB1152, EPHB1153, EPHB1154, EPHB1155, EPHB1156, EPHB1157, EPHB1158, EPHB1159, EPHB1160, EPHB1161, EPHB1162, EPHB1163, EPHB1164, EPHB1165, EPHB1166, EPHB1167, EPHB1168, EPHB1169, EPHB1170, EPHB1171, EPHB1172, EPHB1173, EPHB1174, EPHB1175, EPHB1176, EPHB1177, EPHB1178, EPHB1179, EPHB1180, EPHB1181, EPHB1182, EPHB1183, EPHB1184, EPHB1185, EPHB1186, EPHB1187, EPHB1188, EPHB1189, EPHB1190, EPHB1191, EPHB1192, EPHB1193, EPHB1194, EPHB1195, EPHB1196, EPHB1197, EPHB1198, EPHB1199, EPHB1200, EPHB1201, EPHB1202, EPHB1203, EPHB1204, EPHB1205, EPHB1206, EPHB1207, EPHB1208, EPHB1209, EPHB1210, EPHB1211, EPHB1212, EPHB1213, EPHB1214, EPHB1215, EPHB1216, EPHB1217, EPHB1218, EPHB1219, EPHB1220, EPHB1221, EPHB1222, EPHB1223, EPHB1224, EPHB1225, EPHB1226, EPHB1227, EPHB1228, EPHB1229, EPHB1230, EPHB1231, EPHB1232, EPHB1233, EPHB1234, EPHB1235, EPHB1236, EPHB1237, EPHB1238, EPHB1239, EPHB1240, EPHB1241, EPHB1242, EPHB1243, EPHB1244, EPHB1245, EPHB1246, EPHB1247, EPHB1248, EPHB1249, EPHB1250, EPHB1251, EPHB1252, EPHB1253, EPHB1254, EPHB1255, EPHB1256, EPHB1257, EPHB1258, EPHB1259, EPHB1260, EPHB1261, EPHB1262, EPHB1263, EPHB1264, EPHB1265, EPHB1266, EPHB1267, EPHB1268, EPHB1269, EPHB1270, EPHB1271, EPHB1272, EPHB1273, EPHB1274, EPHB1275, EPHB1276, EPHB1277, EPHB1278, EPHB1279, EPHB1280, EPHB1281, EPHB1282, EPHB1283, EPHB1284, EPHB1285, EPHB1286, EPHB1287, EPHB1288, EPHB1289, EPHB1290, EPHB1291, EPHB1292, EPHB1293, EPHB1294, EPHB1295, EPHB1296, EPHB1297, EPHB1298, EPHB1299, EPHB1300, EPHB1301, EPHB1302, EPHB1303, EPHB1304, EPHB1305, EPHB1306, EPHB1307, EPHB1308, EPHB1309, EPHB1310, EPHB1311, EPHB1312, EPHB1313, EPHB1314, EPHB1315, EPHB1316, EPHB1317, EPHB1318, EPHB1319, EPHB1320, EPHB1321, EPHB1322, EPHB1323, EPHB1324, EPHB1325, EPHB1326, EPHB1327, EPHB1328, EPHB1329, EPHB1330, EPHB1331, EPHB1332, EPHB1333, EPHB1334, EPHB1335, EPHB1336, EPHB1337, EPHB1338, EPHB1339, EPHB1340, EPHB1341, EPHB1342, EPHB1343, EPHB1344, EPHB1345, EPHB1346, EPHB1347, EPHB1348, EPHB1349, EPHB1350, EPHB1351, EPHB1352, EPHB1353, EPHB1354, EPHB1355, EPHB1356, EPHB1357, EPHB1358, EPHB1359, EPHB1360, EPHB1361, EPHB1362, EPHB1363, EPHB1364, EPHB1365, EPHB1366, EPHB1367, EPHB1368, EPHB1369, EPHB1370, EPHB1371, EPHB1372, EPHB1373, EPHB1374, EPHB1375, EPHB1376, EPHB1377, EPHB1378, EPHB1379, EPHB1380, EPHB1381, EPHB1382, EPHB1383, EPHB1384, EPHB1385, EPHB1386, EPHB1387, EPHB1388, EPHB1389, EPHB1390, EPHB1391, EPHB1392, EPHB1393, EPHB1394, EPHB1395, EPHB1396, EPHB1397, EPHB1398, EPHB1399, EPHB1400, EPHB1401, EPHB1402, EPHB1403, EPHB1404, EPHB1405, EPHB1406, EPHB1407, EPHB1408, EPHB1409, EPHB1410, EPHB1411, EPHB1412, EPHB1413, EPHB1414, EPHB1415, EPHB1416, EPHB1417, EPHB1418, EPHB1419, EPHB1420, EPHB1421, EPHB1422, EPHB1423, EPHB1424, EPHB1425, EPHB1426, EPHB1427, EPHB1428, EPHB1429, EPHB1430, EPHB1431, EPHB1432, EPHB1433, EPHB1434, EPHB1435, EPHB1436, EPHB1437, EPHB1438, EPHB1439, EPHB1440, EPHB1441, EPHB1442, EPHB1443, EPHB1444, EPHB1445, EPHB1446, EPHB1447, EPHB1448, EPHB1449, EPHB1450, EPHB1451, EPHB1452, EPHB1453, EPHB1454, EPHB1455, EPHB1456, EPHB1457, EPHB1458, EPHB1459, EPHB1460, EPHB1461, EPHB1462, EPHB1463, EPHB1464, EPHB1465, EPHB1466, EPHB1467, EPHB1468, EPHB1469, EPHB1470, EPHB1471, EPHB1472, EPHB1473, EPHB1474, EPHB1475, EPHB1476, EPHB1477, EPHB1478, EPHB1479, EPHB1480, EPHB1481, EPHB1482, EPHB1483, EPHB1484, EPHB1485, EPHB1486, EPHB1487, EPHB1488, EPHB1489, EPHB1490, EPHB1491, EPHB1492, EPHB1493, EPHB1494, EPHB1495, EPHB1496, EPHB1497, EPHB1498, EPHB1499, EPHB1500, EPHB1501, EPHB1502, EPHB1503, EPHB1504, EPHB1505, EPHB1506, EPHB1507, EPHB1508, EPHB1509, EPHB1510, EPHB1511, EPHB1512, EPHB1513, EPHB1514, EPHB1515, EPHB1516, EPHB1517, EPHB1518, EPHB1519, EPHB1520, EPHB1521, EPHB1522, EPHB1523, EPHB1524, EPHB1525, EPHB1526, EPHB1527, EPHB1528, EPHB1529, EPHB1530, EPHB1531, EPHB1532, EPHB1533, EPHB1534, EPHB1535, EPHB1536, EPHB1537, EPHB1538, EPHB1539, EPHB1540, EPHB1541, EPHB1542, EPHB1543, EPHB1544, EPHB1545, EPHB1546, EPHB1547, EPHB1548, EPHB1549, EPHB1550, EPHB1551, EPHB1552, EPHB155

연구 분야

-

이미지 데이터



메들로 생성 HEK293 세포에 EphB4-hlgGf 를 발현시킨 후 EphB4 마우스 특이 항체를 사용하여 공집면 항체를 수형한 결과 세포에 국소화 된 것을 확인할 수 있다. 표본은 DRAQ5 형광 DNA 염색이다.