
Product Name: KD-Validated RBBP4 Recombinant Rabbit Monoclonal Antibody**Catalog #: KOVAb00936**

For research use only.

Summary

Description	KD-Validated antibody
Host	Rabbit
Application	WB,FCM,ICC,IHC-P
Reactivity	Human,Mouse,Rat
Conjugation	Unconjugated
Modification	Unmodified
Isotype	Rabbit IgG
Clonality	Rabbit mAb
Form	Liquid
Storage	Aliquot and store at -20°C (valid for 12 months). Avoid freeze/thaw cycles.
Shipping	Ice bags
Buffer	Supplied in PBS (pH 7.4) containing 50% glycerol, and 0.02% sodium azide.
Purification	Affinity purification

Application

Dilution Ratio	WB 1:1,000-1:5,000; FC 1:200-1:2,000; ICC 1:100-1:1,000; IHC-P 1:100-1:200
Molecular Weight	Calculated MW: 47.7kDa

Antigen Information

Gene Name	RBBP4
Alternative Names	RB Binding Protein 4, Chromatin Remodeling Factor; Retinoblastoma-Binding Protein 4; RbAp48; NURF55; Lin-53; Nucleosome-Remodeling Factor Subunit RBAP48; Chromatin Assembly Factor I P48 Subunit; Chromatin Assembly Factor 1 Subunit C; Retinoblastoma-Binding Protein P48; Histone-Binding Protein RBBP4; CAF-I 48 KDa Subunit; CAF-1 Subunit C; CAF-I P48; RBBP-4; Chromatin Assembly Factor/CAF-1 P48 Subunit; Retinoblastoma Binding Protein 4; MSI1 Protein Homolog; RBAP48
Gene ID	5928.0
SwissProt ID	Q09028
Immunogen	A synthesized peptide derived from human RbAp48

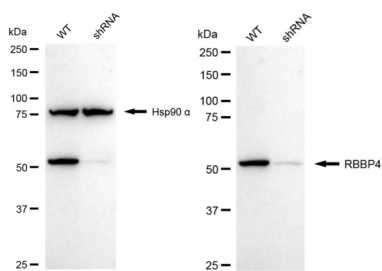
Background

This gene encodes a ubiquitously expressed nuclear protein which belongs to a highly conserved subfamily of WD-repeat proteins. It is present in protein complexes involved in histone acetylation and chromatin assembly. It is part of the Mi-2 complex which has been implicated in chromatin remodeling and transcriptional repression associated with histone deacetylation. This encoded protein is also part of co-repressor complexes, which is an integral component of transcriptional silencing. It is found among several cellular proteins that bind directly to retinoblastoma protein to regulate cell proliferation. This protein also seems to be involved in transcriptional repression of E2F-responsive genes. Three transcript variants encoding different isoforms have been found for this gene. [provided by RefSeq, Sep 2008]

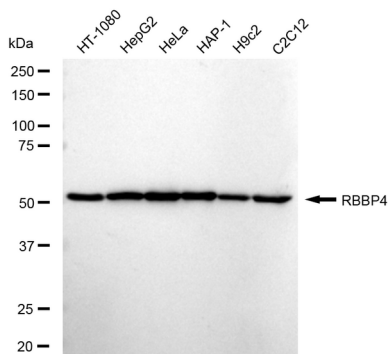
Research Area

Epigenetics and Nuclear Signaling, Cancer

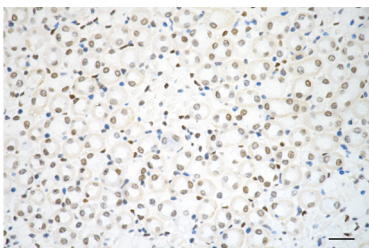
Image Data



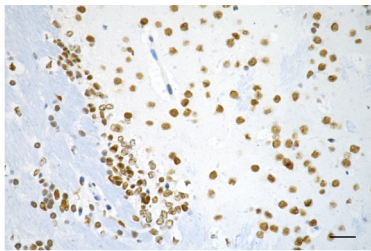
Western blotting analysis using RBBP4 antibody (KOVAb00936). RBBP4 expression in wild type (WT) and RBBP4 shRNA knockdown (KD) HeLa cells with 20 μ g of total cell lysates. Hsp90 α serves as a loading control. The blot was incubated with RBBP4 antibody (KOVAb00936, 1:5,000) and HRP-conjugated goat anti-rabbit secondary antibody (APS0635, 1:10,000) respectively.



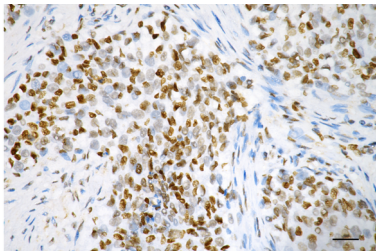
Western blotting analysis using RBBP4 antibody (KOVAb00936). Total cell lysates (30 μ g) from various cell lines were loaded and separated by SDS-PAGE. The blot was incubated with RBBP4 antibody (KOVAb00936, 1:5,000) and HRP-conjugated goat anti-rabbit secondary antibody (APS0635, 1:10,000) respectively.



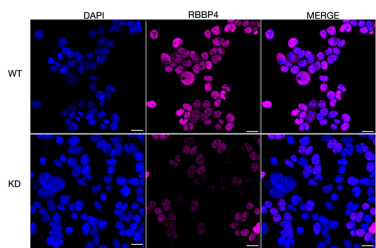
Immunohistochemistry was performed on paraffin-embedded mouse kidney using RBBP4 antibody (KOVAb00936, 1:200). Antigen retrieval was done in sodium citrate buffer (pH 6.0). DAB was used for detection, with hematoxylin counterstaining. Images were acquired using a Nikon Ci-L Plus microscope (40 \times objective). Scale bar: 25 μ m.



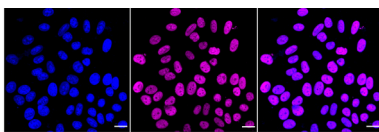
Immunohistochemistry was performed on paraffin-embedded mouse brain using RBBP4 antibody (KOVA00936, 1:200). Antigen retrieval was done in sodium citrate buffer (pH 6.0). DAB was used for detection, with hematoxylin counterstaining. Images were acquired using a Nikon Ci-L Plus microscope (40× objective). Scale bar: 25 μm.



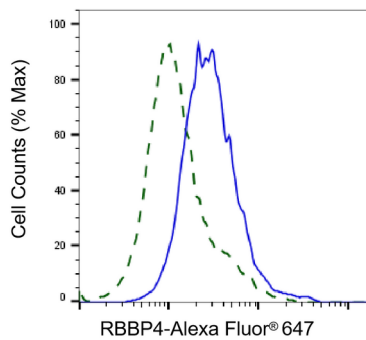
Immunohistochemistry was performed on paraffin-embedded mouse liver using RBBP4 antibody (KOVA00936, 1:200). Antigen retrieval was done in sodium citrate buffer (pH 6.0). DAB was used for detection, with hematoxylin counterstaining. Images were acquired using a Nikon Ci-L Plus microscope (40× objective). Scale bar: 25 μm.



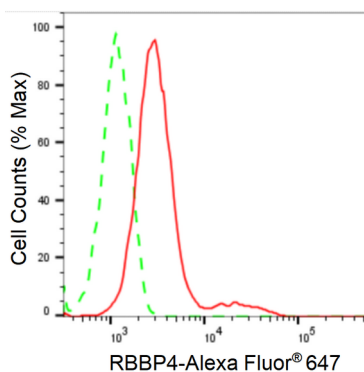
Immunocytochemical staining of HeLa cells using RBBP4 antibody (KOVA00936, 1:1,000), Top panel: wild-type (WT); Bottom panel: RBBP4 shRNA knockdown (KD). Nuclei were stained blue with DAPI; RBBP4 was stained magenta with Alexa Fluor® 647. Scale bar, 20 μm. Permeabilization: Triton.



Immunocytochemical staining of HepG2 cells with RBBP4 antibody (KOVA00936, 1:1,000). Nuclei were stained blue with DAPI; RBBP4 was stained magenta with Alexa Fluor® 647. Images were taken using Leica stellaris 5. Protein abundance based on laser Intensity and smart gain: Medium. Scale bar: 20 μm.



Validation of RBBP4 knockdown using flow cytometry. Wild-type(WT, Blue) and knockdown(KD, Green) HeLa cells were stained with RBBP4 antibody (KOVA00936, 1:2,000) and analyzed using BD flow cytometer.



Flow cytometric analysis of RBBP4 expression in HepG2 cells using RBBP4 antibody (KOVA00936, 1:2,000). Green, isotype control; red, RBBP4.