
Product Name: KD-Validated Galectin 1 Rabbit Polyclonal Antibody**Catalog #: KOVAb00472**

For research use only.

Summary

Description	KD-Validated antibody
Host	Rabbit
Application	WB
Reactivity	Human,Mouse,Rat
Conjugation	Unconjugated
Modification	Unmodified
Isotype	Rabbit IgG
Clonality	Rabbit pAb
Form	Liquid
Storage	Aliquot and store at -20°C (valid for 12 months). Avoid freeze/thaw cycles.
Shipping	Ice bags
Buffer	Supplied in PBS (pH 7.4) containing 50% glycerol, and 0.02% sodium azide.
Purification	Affinity purification

Application

Dilution Ratio	WB 1:500-1:2,500
Molecular Weight	Calculated MW: 14.7kDa

Antigen Information

Gene Name	LGALS1 LGALS1; Galectin 1; GBP; Lectin, Galactoside-Binding, Soluble, 1; Beta-Galactoside-Binding Lectin L-14-I; Putative MAPK-Activating Protein PM12; 14 KDa Laminin-Binding Protein;
Alternative Names	Lactose-Binding Lectin 1; S-Lac Lectin 1; 14 KDa Lectin; Galectin-1; Galaptin; HLBP14; Gal-1; HBL; HPL; Epididymis Secretory Sperm Binding Protein; Beta-Galactoside-Binding Protein 14kDa; Lectin Galactoside-Binding Soluble 1; GAL1
Gene ID	3956.0
SwissProt ID	P09382
Immunogen	A synthesized peptide derived from human Galectin 1

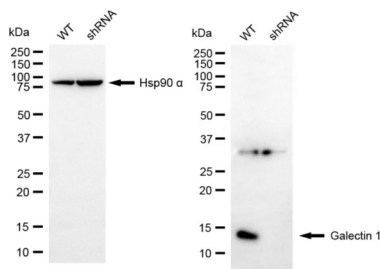
Background

The galectins are a family of beta-galactoside-binding proteins implicated in modulating cell-cell and cell-matrix interactions. This gene product may act as an autocrine negative growth factor that regulates cell proliferation. [provided by RefSeq, Jul 2008]

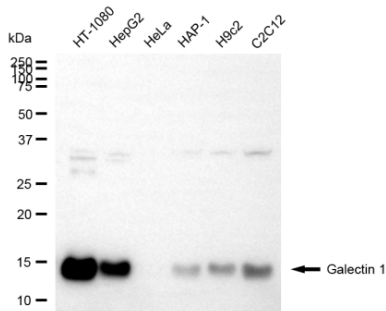
Research Area

Cell Biology,Cancer

Image Data



Western blotting analysis using galectin 1 antibody (KOVA00472). Galectin 1 expression in wild-type (WT) and galectin 1 (LGALS1) shRNA knockdown (KD) HeLa cells with 20 μ g of total cell lysates. Hsp90 α serves as a loading control. The blot was incubated with galectin 1 antibody (KOVA00472, 1:2,500) and HRP-conjugated goat anti-rabbit secondary antibody (APS0635, 1:10,000) respectively.



Western blotting analysis using galectin 1 antibody (KOVA00472). Total cell lysates (30 μ g) from various cell lines were loaded and separated by SDS-PAGE. The blot was incubated with galectin 1 antibody (KOVA00472, 1:2,500) and HRP-conjugated goat anti-rabbit secondary antibody (APS0635, 1:10,000) respectively.