
Product Name: KD-Validated SCAMP2 Mouse Monoclonal Antibody**Catalog #: KOVAb00048**

For research use only.

Summary

Description	KD-Validated antibody
Host	Mouse
Application	WB,FCM,ICC
Reactivity	Human
Conjugation	Unconjugated
Modification	Unmodified
Isotype	Mouse IgG2b
Clonality	Mouse mAb
Form	Liquid
Storage	Aliquot and store at -20°C (valid for 12 months). Avoid freeze/thaw cycles.
Shipping	Ice bags
Buffer	Supplied in PBS (pH 7.4) containing 50% glycerol, and 0.02% sodium azide.
Purification	Affinity purification

Application

Dilution Ratio	WB 1:400-1:5,000; FC 1:200-1:2,000; ICC 1:100-1:1,000
Molecular Weight	Calculated MW: 36.6kDa

Antigen Information

Gene Name	SCAMP2
Alternative Names	SCAMP2; Secretory Carrier Membrane Protein 2; Secretory Carrier-Associated Membrane Protein 2; Testis Secretory Sperm-Binding Protein Li 219p
Gene ID	10066.0
SwissProt ID	O15127
Immunogen	Recombinant protein of human SCAMP2

Background

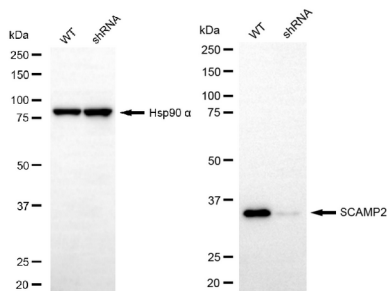
This gene product belongs to the SCAMP family of proteins which are secretory carrier membrane proteins. They function as carriers to the cell surface in post-golgi recycling pathways. Different family members are highly related products of distinct genes, and are usually expressed together. These findings suggest that the SCAMPs may function at the same site during

vesicular transport rather than in separate pathways. Alternate splicing results in multiple transcript variants. [provided by RefSeq, Mar 2016]

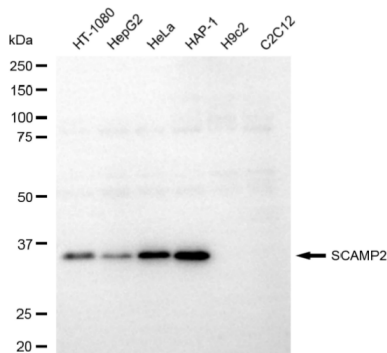
Research Area

Neuroscience, Signal Transduction

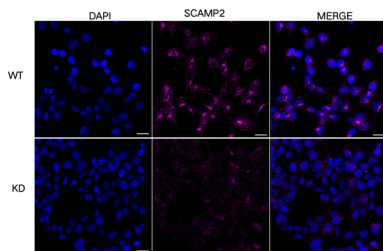
Image Data



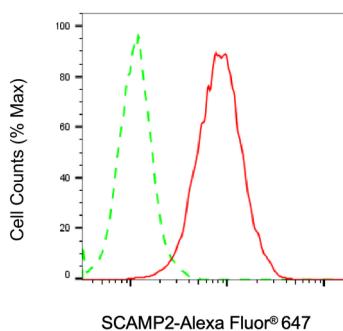
Western blotting analysis using SCAMP2 antibody (KOVAb00048). SCAMP2 expression in wild-type (WT) and SCAMP2 shRNA knockdown (KD) HeLa cells with 20 µg of total cell lysates. Hsp90 α serves as a loading control. The blot was incubated with SCAMP2 antibody (KOVAb00048, 1:5,000) and HRP-conjugated goat anti-mouse secondary antibody (APS0631, 1:10,000) respectively.



Western blotting analysis using SCAMP2 antibody (KOVAb00048). Total cell lysates (30 µg) from various cell lines were loaded and separated by SDS-PAGE. The blot was incubated with SCAMP2 antibody (KOVAb00048, 1:5,000) and HRP-conjugated goat anti-mouse secondary antibody (APS0631, 1:10,000) respectively.



Immunocytochemical staining of HeLa cells using SCAMP2 antibody (KOVAb00048, 1:1,000), Top panel: wild-type (WT); Bottom panel: SCAMP2 shRNA knockdown (KD). Nuclei were stained blue with DAPI; SCAMP2 was stained magenta with Alexa Fluor® 647. Scale bar: 20 µm.



Flow cytometric analysis of SCAMP2 expression in HAP-1 cells using SCAMP2 antibody (KOVAb00048, 1:2,000). Green, isotype control; red, SCAMP2.