

---

**Product Name: KD-Validated Vinculin Mouse Monoclonal Antibody****Catalog #: KVA01928**

For research use only.

**Summary**

<b>Description</b>	KO&KD-Validated antibody
<b>Host</b>	Mouse
<b>Application</b>	WB
<b>Reactivity</b>	Human,Mouse,Rat
<b>Conjugation</b>	Unconjugated
<b>Modification</b>	Unmodified
<b>Isotype</b>	Mouse IgG1
<b>Clonality</b>	Mouse mAb
<b>Form</b>	Liquid
<b>Storage</b>	Aliquot and store at -20°C (valid for 12 months). Avoid freeze/thaw cycles.
<b>Shipping</b>	Ice bags
<b>Buffer</b>	Supplied in PBS (pH 7.4) containing 50% glycerol, and 0.02% sodium azide.
<b>Purification</b>	Affinity purification

**Application**

<b>Dilution Ratio</b>	WB 1:400-1:2,000
<b>Molecular Weight</b>	Calculated MW: 123.8kDa

**Antigen Information**

<b>Gene Name</b>	VCL
<b>Alternative Names</b>	VCL; Vinculin; Metavinculin; VINC; MV; Epididymis Secretory Sperm Binding Protein; Epididymis Luminal Protein 114; Meta-Vinculin; HEL114; CMD1W; CMH15; MVCL
<b>Gene ID</b>	7414.0
<b>SwissProt ID</b>	P18206
<b>Immunogen</b>	Recombinant protein of human VCL

**Background**

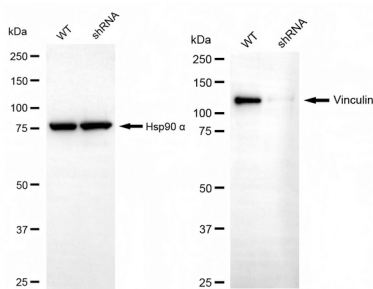
Vinculin is a cytoskeletal protein associated with cell-cell and cell-matrix junctions, where it is thought to function as one of several interacting proteins involved in anchoring F-actin to the membrane. Defects in VCL are the cause of cardiomyopathy dilated type 1W. Dilated cardiomyopathy is a disorder characterized by ventricular dilation and impaired systolic function,

resulting in congestive heart failure and arrhythmia. Multiple alternatively spliced transcript variants have been found for this gene, but the biological validity of some variants has not been determined. [provided by RefSeq, Jul 2008]

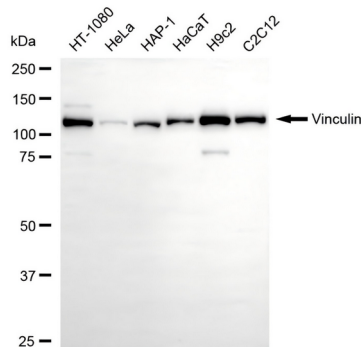
## Research Area

Signal Transduction, Cardiovascular, Isotype/Loading Controls

## Image Data



Western blotting analysis using vinculin antibody (KVA01928). Vinculin expression in wild-type (WT) and vinculin (VCL) shRNA knockdown (KD) HeLa cells with 30  $\mu$ g of total cell lysates. Hsp90  $\alpha$  serves as a loading control. The blot was incubated with vinculin antibody (KVA01928, 1:2,000) and HRP-conjugated goat anti-mouse secondary antibody (APS0631, 1:10,000) respectively.



Western blotting analysis using vinculin antibody (KVA01928). Total cell lysates (30  $\mu$ g) from various cell lines were loaded and separated by SDS-PAGE. The blot was incubated with vinculin antibody (KVA01928, 1:2,000) and HRP-conjugated goat anti-mouse secondary antibody (APS0631, 1:10,000) respectively.