
Product Name: KD-Validated Mannose Phosphate Isomerase Mouse Monoclonal Antibody
Catalog #: KVA01233

For research use only.

Summary

Description	KO&KD-Validated antibody
Host	Mouse
Application	WB,FCM
Reactivity	Human,Mouse,Rat
Conjugation	Unconjugated
Modification	Unmodified
Isotype	Mouse IgG1
Clonality	Mouse mAb
Form	Liquid
Storage	Aliquot and store at -20°C (valid for 12 months). Avoid freeze/thaw cycles.
Shipping	Ice bags
Buffer	Supplied in PBS (pH 7.4) containing 50% glycerol, and 0.02% sodium azide.
Purification	Affinity purification

Application

Dilution Ratio	WB 1:500-1:2,500; FC 1:200-1:2,000
Molecular Weight	Calculated MW: 46.7kDa

Antigen Information

Gene Name	MPI
Alternative Names	MPI; Mannose Phosphate Isomerase; Mannose-6-Phosphate Isomerase; Phosphohexomutase; EC 5.3.1.8; PMI1; PMI; Phosphomannose Isomerase 1; Phosphomannose Isomerase; EC 5.3.1; CDG1B
Gene ID	4351.0
SwissProt ID	P34949
Immunogen	Recombinant protein of human MPI

Background

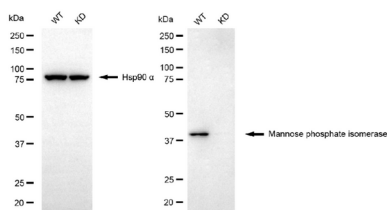
Phosphomannose isomerase catalyzes the interconversion of fructose-6-phosphate and mannose-6-phosphate and plays a critical role in maintaining the supply of D-mannose derivatives, which are required for most glycosylation reactions. Mutations

in the MPI gene were found in patients with carbohydrate-deficient glycoprotein syndrome, type Ib. Alternative splicing results in multiple transcript variants. [provided by RefSeq, Jan 2014]

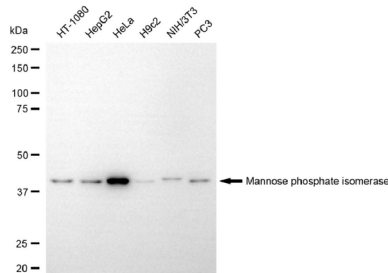
Research Area

Immunology, Cell Biology, Cardiovascular

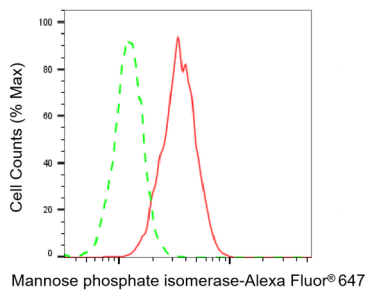
Image Data



Western blotting analysis using mannose phosphate isomerase antibody (KVA01233). Mannose phosphate isomerase expression in wild-type (WT) and mannose phosphate isomerase (MPI) knockdown (KD) HSHC cells with 30 μ g of total cell lysates. Hsp90 α serves as a loading control. The blot was incubated with mannose phosphate isomerase antibody (KVA01233, 1:2,500) and HRP-conjugated goat anti-mouse secondary antibody (APS0631, 1:10,000) respectively.



Western blotting analysis using mannose phosphate isomerase antibody (KVA01233). Total cell lysates (30 μ g) from various cell lines were loaded and separated by SDS-PAGE. The blot was incubated with mannose phosphate isomerase antibody (KVA01233, 1:2,500) and HRP-conjugated goat anti-mouse secondary antibody (APS0631, 1:10,000) respectively.



Flow cytometric analysis of Mannose phosphate isomerase expression in HeLa cells using Mannose phosphate isomerase antibody (KVA01233, 1:2,000). Green, isotype control; red, Mannose phosphate isomerase.