

---

**Product Name: KD-Validated CSE1L Rabbit Polyclonal Antibody****Catalog #: KVA01139**

For research use only.

**Summary**

<b>Description</b>	KO&KD-Validated antibody
<b>Host</b>	Rabbit
<b>Application</b>	WB,IHC-P
<b>Reactivity</b>	Human,Mouse,Rat
<b>Conjugation</b>	Unconjugated
<b>Modification</b>	Unmodified
<b>Isotype</b>	Rabbit IgG
<b>Clonality</b>	Rabbit pAb
<b>Form</b>	Liquid
<b>Storage</b>	Aliquot and store at -20°C (valid for 12 months). Avoid freeze/thaw cycles.
<b>Shipping</b>	Ice bags
<b>Buffer</b>	Supplied in PBS (pH 7.4) containing 50% glycerol, and 0.02% sodium azide.
<b>Purification</b>	Affinity purification

**Application**

<b>Dilution Ratio</b>	WB 1:400-1:2,000; IHC-P 1:100-1:200
<b>Molecular Weight</b>	Calculated MW: 110.4kDa

**Antigen Information**

<b>Gene Name</b>	CSE1L CSE1L; Chromosome Segregation 1 Like; XPO2; CAS; CSE1; Cellular Apoptosis Susceptibility Protein; Chromosome Segregation 1-Like Protein; Importin-Alpha Re-Exporter; Exportin-2;
<b>Alternative Names</b>	Exp2; Chromosome Segregation 1 (Yeast Homolog)-Like; CSE1 Chromosome Segregation 1-Like (Yeast); Epididymis Secretory Sperm Binding Protein; CSE1 Chromosome Segregation 1 Like; CSE1 Chromosome Segregation 1-Like; Cellular Apoptosis Susceptibility
<b>Gene ID</b>	1434.0
<b>SwissProt ID</b>	P55060
<b>Immunogen</b>	A synthesized peptide derived from human XPO2

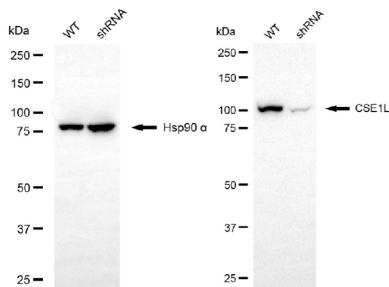
**Background**

Proteins that carry a nuclear localization signal (NLS) are transported into the nucleus by the importin-alpha/beta heterodimer. Importin-alpha binds the NLS, while importin-beta mediates translocation through the nuclear pore complex. After translocation, RanGTP binds importin-beta and displaces importin-alpha. Importin-alpha must then be returned to the cytoplasm, leaving the NLS protein behind. The protein encoded by this gene binds strongly to NLS-free importin-alpha, and this binding is released in the cytoplasm by the combined action of RANBP1 and RANGAP1. In addition, the encoded protein may play a role both in apoptosis and in cell proliferation. Alternatively spliced transcript variants have been found for this gene. [provided by RefSeq, Jan 2012]

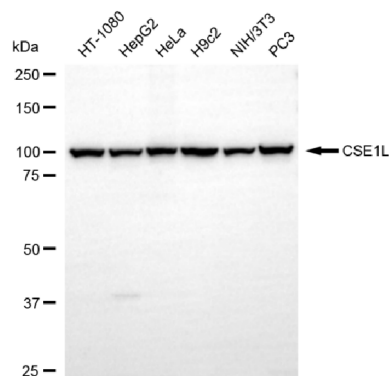
## Research Area

Cell Biology, Signal Transduction, Cancer

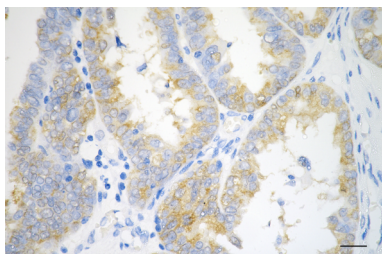
## Image Data



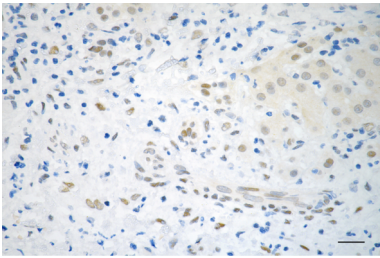
Western blotting analysis using CSE1L antibody (KVA01139). CSE1L expression in wild-type (WT) and CSE1L shRNA knockdown (KD) HeLa cells with 20  $\mu$ g of total cell lysates. Hsp90  $\alpha$  serves as a loading control. The blot was incubated with CSE1L antibody (KVA01139, 1:2,500) and HRP-conjugated goat anti-rabbit secondary antibody (APS0635, 1:10,000) respectively.



Western blotting analysis using CSE1L antibody (KVA01139). Total cell lysates (30  $\mu$ g) from various cell lines were loaded and separated by SDS-PAGE. The blot was incubated with CSE1L antibody (KVA01139, 1:2,000) and HRP-conjugated goat anti-rabbit secondary antibody (APS0635, 1:10,000) respectively.



Immunohistochemistry was performed on paraffin-embedded human ovarian carcinoma using CSE1L antibody (KVA01139, 1:200). Antigen retrieval was done in sodium citrate buffer (pH 6.0). DAB was used for detection, with hematoxylin counterstaining. Images were acquired using a Nikon Ci-L Plus microscope (40 $\times$  objective). Scale bar: 25  $\mu$ m.



Immunohistochemistry was performed on paraffin-embedded human hepatocarcinoma using CSE1L antibody (KVA01139, 1:200). Antigen retrieval was done in sodium citrate buffer (pH 6.0). DAB was used for detection, with hematoxylin counterstaining. Images were acquired using a Nikon Ci-L Plus microscope (40× objective). Scale bar: 25  $\mu$ m.