

---

**Product Name: KD-Validated Adrenoceptor Alpha 1A Recombinant Rabbit Monoclonal Antibody****Catalog #: KVAAb01122**

For research use only.

**Summary**

<b>Description</b>	KO&KD-Validated antibody
<b>Host</b>	Rabbit
<b>Application</b>	WB,FCM,ICC,IHC-P
<b>Reactivity</b>	Human,Mouse,Rat
<b>Conjugation</b>	Unconjugated
<b>Modification</b>	Unmodified
<b>Isotype</b>	Rabbit IgG
<b>Clonality</b>	Rabbit mAb
<b>Form</b>	Liquid
<b>Storage</b>	Aliquot and store at -20°C (valid for 12 months). Avoid freeze/thaw cycles.
<b>Shipping</b>	Ice bags
<b>Buffer</b>	Supplied in PBS (pH 7.4) containing 50% glycerol, and 0.02% sodium azide.
<b>Purification</b>	Affinity purification

**Application**

<b>Dilution Ratio</b>	WB 1:1,000-1:5,000; FC 1:200-1:2,000; ICC 1:100-1:1,000; IHC-P 1:100-1:200
<b>Molecular Weight</b>	Calculated MW: 51.5kDa

**Antigen Information**

<b>Gene Name</b>	ADRA1A
<b>Alternative Names</b>	ADRA1A; Adrenoceptor Alpha 1A; ADRA1L1; ADRA1C; Alpha-1A Adrenergic Receptor; Alpha-1C Adrenergic Receptor; Alpha-1A Adrenoreceptor; Alpha-1A Adrenoceptor; Adrenergic, Alpha-1A-, Receptor; Alpha-Adrenergic Receptor 1c; G Protein Coupled Receptor; ALPHA1AAR
<b>Gene ID</b>	148.0
<b>SwissProt ID</b>	P35348
<b>Immunogen</b>	A synthesized peptide derived from human ADRA1A

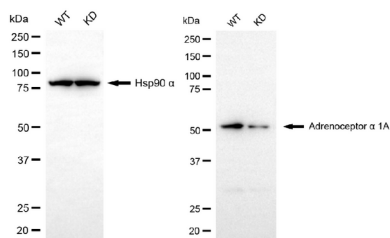
**Background**

Alpha-1-adrenergic receptors (alpha-1-ARs) are members of the G protein-coupled receptor superfamily. They activate mitogenic responses and regulate growth and proliferation of many cells. There are 3 alpha-1-AR subtypes: alpha-1A, -1B and -1D, all of which signal through the Gq/11 family of G-proteins and different subtypes show different patterns of activation. This gene encodes alpha-1A-adrenergic receptor. Alternative splicing of this gene generates four transcript variants, which encode four different isoforms with distinct C-termini but having similar ligand binding properties. [provided by RefSeq, Jul 2008]

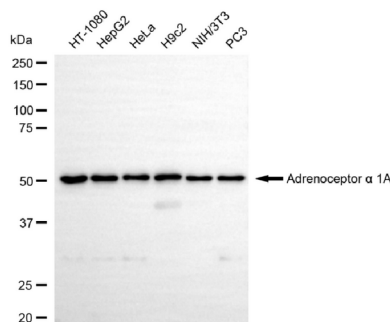
## Research Area

Neuroscience, Signal Transduction, Cardiovascular, Neuroscience

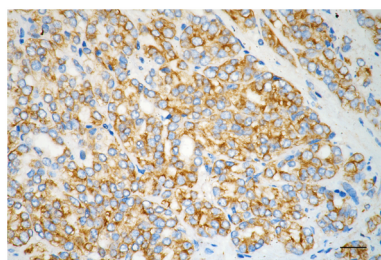
## Image Data



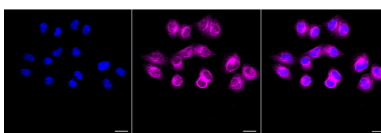
Western blotting analysis using adrenoceptor alpha 1A antibody (KVA01122). Adrenoceptor alpha 1A expression in wild-type (WT) and adrenoceptor alpha 1A (ADRA1A) knockdown (KD) 293T cells with 20 µg of total cell lysates. Hsp90 α serves as a loading control. The blot was incubated with adrenoceptor alpha 1A antibody (KVA01122, 1:5,000) and HRP-conjugated goat anti-rabbit secondary antibody (APS0635, 1:10,000) respectively.



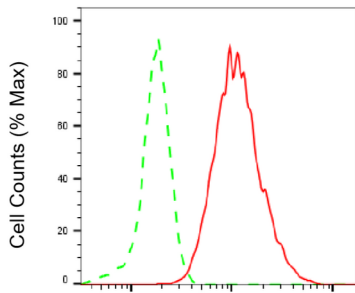
Western blotting analysis using adrenoceptor alpha 1A antibody (KVA01122). Total cell lysates (30 µg) from various cell lines were loaded and separated by SDS-PAGE. The blot was incubated with adrenoceptor alpha 1A antibody (KVA01122, 1:5,000) and HRP-conjugated goat anti-rabbit secondary antibody (APS0635, 1:10,000) respectively.



Immunohistochemistry was performed on paraffin-embedded human prostatic adenocarcinoma using adrenoceptor alpha 1A antibody (KVA01122, 1:200). Antigen retrieval was done in sodium citrate buffer (pH 6.0). DAB was used for detection, with hematoxylin counterstaining. Images were acquired using a Nikon Ci-L Plus microscope (40× objective). Scale bar: 25 µm.



Immunocytochemical staining of HepG2 cells with Adrenoceptor alpha 1A antibody (KVA01122, 1:1,000). Nuclei were stained blue with DAPI; Adrenoceptor alpha 1A was stained magenta with Alexa Fluor® 647. Images were taken using Leica stellaris 5. Protein abundance based on laser Intensity and smart gain: High. Scale bar, 20 µm.



Adrenoceptor alpha 1A-Alexa Fluor® 647

Flow cytometric analysis of Adrenoceptor alpha 1A expression in HepG2 cells using Adrenoceptor alpha 1A antibody (KVA01122, 1:2,000). Green, isotype control; red, Adrenoceptor alpha 1A.