
Product Name: KD-Validated ETFA Mouse Monoclonal Antibody**Catalog #: KVA00647**

For research use only.

Summary

Description	KO&KD-Validated antibody
Host	Mouse
Application	WB,FCM,ICC
Reactivity	Human,M
Conjugation	Unconjugated
Modification	Unmodified
Isotype	Mouse IgG1
Clonality	Mouse mAb
Form	Liquid
Storage	Aliquot and store at -20°C (valid for 12 months). Avoid freeze/thaw cycles.
Shipping	Ice bags
Buffer	Supplied in PBS (pH 7.4) containing 50% glycerol, and 0.02% sodium azide.
Purification	Affinity purification

Application

Dilution Ratio	WB 1:1,000-1:5,000; FC 1:200-1:2,000; ICC 1:100-1:1,000
Molecular Weight	Calculated MW: 35.1kDa

Antigen Information

Gene Name	ETFA ETFA; Electron Transfer Flavoprotein Subunit Alpha; MADD; GA2; EMA; Electron Transfer Flavoprotein Subunit Alpha, Mitochondrial; Multiple Acyl-CoA Dehydrogenase Deficiency;
Alternative Names	Glutaric Aciduria II; Alpha-ETF; Electron-Transfer-Flavoprotein, Alpha Polypeptide; Electron Transfer Flavoprotein, Alpha Polypeptide; Electron Transfer Flavoprotein Alpha Subunit; Epididymis Secretory Sperm Binding Protein
Gene ID	2108.0
SwissProt ID	P13804
Immunogen	Recombinant protein of human ETFA

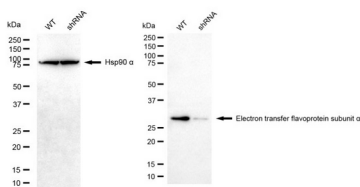
Background

ETFA participates in catalyzing the initial step of the mitochondrial fatty acid beta-oxidation. It shuttles electrons between primary flavoprotein dehydrogenases and the membrane-bound electron transfer flavoprotein ubiquinone oxidoreductase. Defects in electron-transfer-flavoprotein have been implicated in type II glutaricaciduria in which multiple acyl-CoA dehydrogenase deficiencies result in large excretion of glutaric, lactic, ethylmalonic, butyric, isobutyric, 2-methyl-butyrac, and isovaleric acids. Two transcript variants encoding different isoforms have been found for this gene. [provided by RefSeq, Jul 2008]

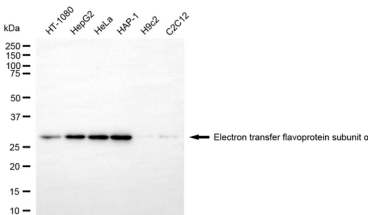
Research Area

Signal Transduction,Cancer,Metabolism

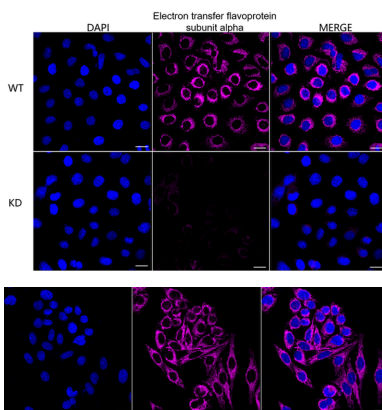
Image Data



Western blotting analysis using electron transfer flavoprotein subunit alpha antibody (KVA00647). Electron transfer flavoprotein subunit alpha expression in wild type (WT) and electron transfer flavoprotein subunit alpha (ETFA) shRNA knockdown (KD) HeLa cells with 20 μ g of total cell lysates. Hsp90 α serves as a loading control. The blot was incubated with electron transfer flavoprotein subunit alpha antibody (KVA00647, 1:5,000) and HRP-conjugated goat anti-mouse secondary antibody (APS0631, 1:10,000) respectively.

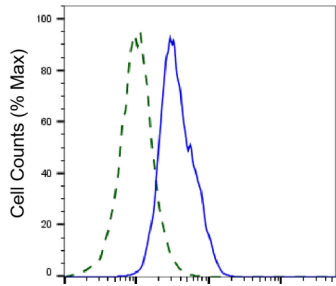


Western blotting analysis using electron transfer flavoprotein subunit alpha antibody (KVA00647). Total cell lysates (30 μ g) from various cell lines were loaded and separated by SDS-PAGE. The blot was incubated with electron transfer flavoprotein subunit alpha antibody (KVA00647, 1:5,000) and HRP-conjugated goat anti-mouse secondary antibody (APS0631, 1:10,000) respectively.



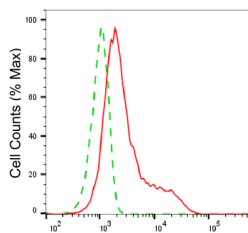
Immunocytochemical staining of HeLa cells using Electron transfer flavoprotein subunit alpha antibody (KVA00647, 1:1,000), Top panel: wild-type (WT); Bottom panel: Adiponectin receptor 1 shRNA knockdown (KD). Nuclei were stained blue with DAPI; Electron transfer flavoprotein subunit alpha was stained magenta with Alexa Fluor® 647. Scale bar, 20 μ m. Permeabilization: Triton.

Immunocytochemical staining of HepG2 cells with Electron transfer flavoprotein subunit alpha antibody (KVA00647, 1:1,000) . Nuclei were stained blue with DAPI; Electron transfer flavoprotein subunit alpha was stained magenta with Alexa Fluor® 647. Images were taken using Leica stellaris 5. Protein abundance based on laser Intensity and Smart Gain: High. Scale bar, 20 μ m.



Electron transfer flavoprotein subunit alpha-Alexa Fluor® 647

Validation of Electron transfer flavoprotein subunit alpha knockdown using flow cytometry. Wild-type(WT, Blue) and knockdown(KD, Green) HeLa cells were stained with Electron transfer flavoprotein subunit alpha antibody (KVA00647, 1:2,000) and analyzed using BD flow cytometer.



Electron transfer flavoprotein subunit alpha-Alexa Fluor® 647

Flow cytometric analysis of Electron transfer flavoprotein subunit alpha expression in HepG2 cells using Electron transfer flavoprotein subunit alpha antibody (KVA00647, 1:2,000). Green, isotype control; red, Electron transfer flavoprotein subunit alpha.