

---

**Product Name: KD-Validated YY1 Mouse Monoclonal Antibody****Catalog #: KVA00611**

For research use only.

**Summary**

<b>Description</b>	KO&KD-Validated antibody
<b>Host</b>	Mouse
<b>Application</b>	WB,FCM
<b>Reactivity</b>	Human,Mouse,Rat
<b>Conjugation</b>	Unconjugated
<b>Modification</b>	Unmodified
<b>Isotype</b>	Mouse IgG2a
<b>Clonality</b>	Mouse mAb
<b>Form</b>	Liquid
<b>Storage</b>	Aliquot and store at -20°C (valid for 12 months). Avoid freeze/thaw cycles.
<b>Shipping</b>	Ice bags
<b>Buffer</b>	Supplied in PBS (pH 7.4) containing 50% glycerol, and 0.02% sodium azide.
<b>Purification</b>	Affinity purification

**Application**

<b>Dilution Ratio</b>	WB 1:1,000-1:5,000; FC 1:200-1:2,000
<b>Molecular Weight</b>	Calculated MW: 44.7kDa

**Antigen Information**

<b>Gene Name</b>	YY1 YY1; YY1 Transcription Factor; INO80S; NF-E1; INO80 Complex Subunit S; YIN-YANG-1;
<b>Alternative Names</b>	DELTA; UCRBP; Transcriptional Repressor Protein YY1; Delta Transcription Factor; Yin And Yang 1 Protein; YY-1; Yin And Yang 1; GADEV5
<b>Gene ID</b>	7528.0
<b>SwissProt ID</b>	P25490
<b>Immunogen</b>	Recombinant protein of human YY1

**Background**

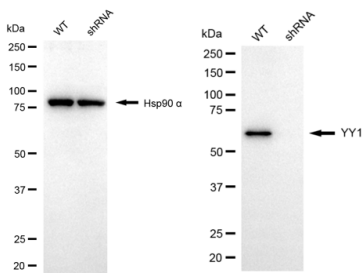
YY1 is a ubiquitously distributed transcription factor belonging to the GLI-Kruppel class of zinc finger proteins. The protein is involved in repressing and activating a diverse number of promoters. YY1 may direct histone deacetylases and histone

acetyltransferases to a promoter in order to activate or repress the promoter, thus implicating histone modification in the function of YY1. [provided by RefSeq, Jul 2008]

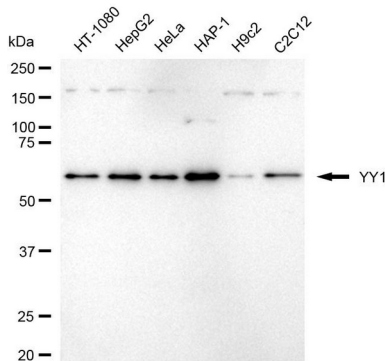
## Research Area

Epigenetics and Nuclear Signaling, Neuroscience, Isotype/Loading Controls

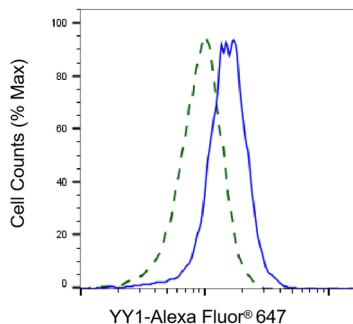
## Image Data



Western blotting analysis using YY1 antibody (KVA00611). YY1 expression in wild-type (WT) and YY1 shRNA knockdown (KD) HeLa cells with 20  $\mu$ g of total cell lysates. Hsp90  $\alpha$  serves as a loading control. The blot was incubated with YY1 antibody (KVA00611, 1:5,000) and HRP-conjugated goat anti-mouse secondary antibody (APS0631, 1:10,000) respectively.



Western blotting analysis using YY1 antibody (KVA00611). Total cell lysates (30  $\mu$ g) from various cell lines were loaded and separated by SDS-PAGE. The blot was incubated with YY1 antibody (KVA00611, 1:5,000) and HRP-conjugated goat anti-mouse secondary antibody (APS0631, 1:10,000) respectively.



Validation of YY1 knockdown using flow cytometry. Wild-type (WT, Blue) and knockdown (KD, Green) HeLa cells were stained with YY1 antibody (KVA00611, 1:2,000) and analyzed using BD flow cytometer.