
Product Name: KO-Validated SMAC Recombinant Rabbit Monoclonal Antibody**Catalog #: KVA00139**

For research use only.

Summary

Description	KO&KD-Validated antibody
Host	Rabbit
Application	WB,FCM,ICC
Reactivity	Human,Mouse,Rat
Conjugation	Unconjugated
Modification	Unmodified
Isotype	Rabbit IgG
Clonality	Rabbit mAb
Form	Liquid
Storage	Aliquot and store at -20°C (valid for 12 months). Avoid freeze/thaw cycles.
Shipping	Ice bags
Buffer	Supplied in PBS (pH 7.4) containing 50% glycerol, and 0.02% sodium azide.
Purification	Affinity purification

Application

Dilution Ratio	WB 1:1,000-1:5,000; FC 1:200-1:2,000; ICC 1:100-1:1,000
Molecular Weight	Calculated MW: 27.1kDa

Antigen Information

Gene Name	DIABLO Diablo; IAP-Binding Mitochondrial Protein; DFNA64; Second Mitochondria-Derived
Alternative Names	Activator Of Caspase; Diablo Homolog; Mitochondrial; SMAC; Smac; Direct IAP-Binding Protein With Low PI
Gene ID	56616.0
SwissProt ID	Q9NR28
Immunogen	A synthesized peptide derived from human Smac/Diablo

Background

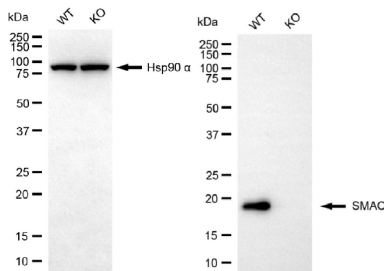
This gene encodes an inhibitor of apoptosis protein (IAP)-binding protein. The encoded mitochondrial protein enters the cytosol when cells undergo apoptosis, and allows activation of caspases by binding to inhibitor of apoptosis proteins.

Overexpression of the encoded protein sensitizes tumor cells to apoptosis. A mutation in this gene is associated with young-adult onset of nonsyndromic deafness-64. Alternative splicing results in multiple transcript variants encoding different isoforms. [provided by RefSeq, May 2013]

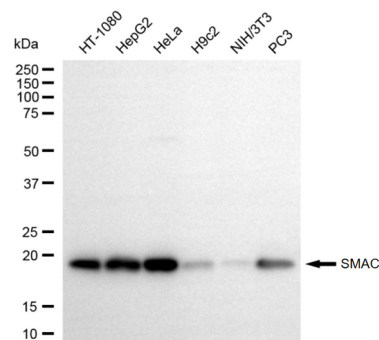
Research Area

Cell Biology,Cancer,Metabolism

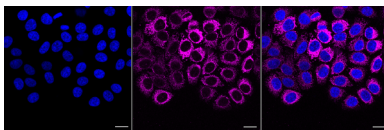
Image Data



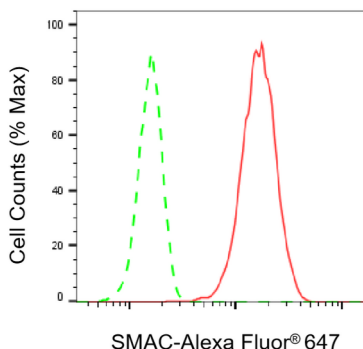
Western blotting analysis using SMAC antibody (KVA00139). SMAC expression in wild-type (WT) and DIABLO knockout (KO) 293T cells with 20 µg of total cell lysates. Hsp90 α serves as a loading control. The blot was incubated with SMAC antibody (KVA00139, 1:5,000) and HRP-conjugated goat anti-rabbit secondary antibody (APS0635, 1:10,000) respectively.



Western blotting analysis using SMAC antibody (KVA00139). Total cell lysates (30 µg) from various cell lines were loaded and separated by SDS-PAGE. The blot was incubated with SMAC antibody (KVA00139, 1:5,000) and HRP-conjugated goat anti-rabbit secondary antibody (APS0635, 1:10,000) respectively.



Immunocytochemical staining of HepG2 cells with SMAC antibody (KVA00139, 1:1,000). Nuclei were stained blue with DAPI; SMAC was stained magenta with Alexa Fluor® 647. Images were taken using Leica stellaris 5. Protein abundance based on laser Intensity and smart gain: High. Scale bar, 20 µm.



Flow cytometric analysis of SMAC expression in HepG2 cells using SMAC antibody (KVA00139, 1:2,000). Green, isotype control; red, SMAC.