

---

**Product Name: KO-Validated Cystathionine gamma-lyase Recombinant Rabbit Monoclonal Antibody****Catalog #: KVAAb00129**

For research use only.

**Summary**

<b>Description</b>	KO&KD-Validated antibody
<b>Host</b>	Rabbit
<b>Application</b>	WB,FCM,ICC
<b>Reactivity</b>	Human
<b>Conjugation</b>	Unconjugated
<b>Modification</b>	Unmodified
<b>Isotype</b>	Rabbit IgG
<b>Clonality</b>	Rabbit mAb
<b>Form</b>	Liquid
<b>Storage</b>	Aliquot and store at -20°C (valid for 12 months). Avoid freeze/thaw cycles.
<b>Shipping</b>	Ice bags
<b>Buffer</b>	Supplied in PBS (pH 7.4) containing 50% glycerol, and 0.02% sodium azide.
<b>Purification</b>	Affinity purification

**Application**

<b>Dilution Ratio</b>	WB 1:1,000-1:5,000; FC 1:200-1:2,000; ICC 1:100-1:1,000
<b>Molecular Weight</b>	Calculated MW: 44.5kDa

**Antigen Information**

<b>Gene Name</b>	CTH
<b>Alternative Names</b>	CTH; Cystathionine Gamma-Lyase; CSE; Cystathionase (Cystathionine Gamma-Lyase); Cysteine-Protein Sulfhydrase; Homocysteine Desulfhydrase; Cysteine Desulfhydrase; Gamma-Cystathionase; EC 4.4.1.1; CGL; Homoserine Dehydratase; Homoserine Deaminase; EC 4.4.1.2; EC 4.4.1
<b>Gene ID</b>	1491.0
<b>SwissProt ID</b>	P32929
<b>Immunogen</b>	A synthesized peptide derived from human Cystathionase

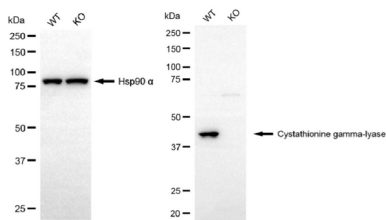
**Background**

This gene encodes a cytoplasmic enzyme in the trans-sulfuration pathway that converts cystathione derived from methionine into cysteine. Glutathione synthesis in the liver is dependent upon the availability of cysteine. Mutations in this gene cause cystathioninuria. Alternative splicing of this gene results in three transcript variants encoding different isoforms. [provided by RefSeq, Jun 2010]

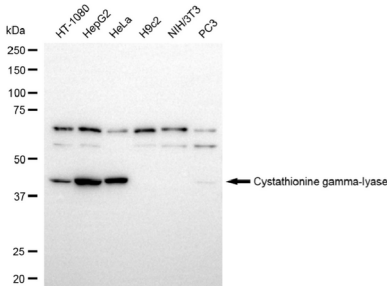
## Research Area

Signal Transduction, Metabolism

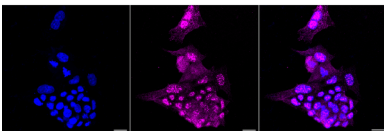
## Image Data



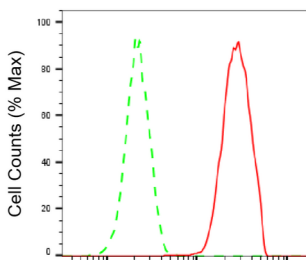
Western blotting analysis using cystathionine gamma-lyase antibody (KVA00129). Cystathionine gamma-lyase expression in wild-type (WT) and cystathionine gamma-lyase (CTH) knockout (KO) 293T cells with 20 µg of total cell lysates. Hsp90 α serves as a loading control. The blot was incubated with cystathionine gamma-lyase antibody (KVA00129, 1:5,000) and HRP-conjugated goat anti-rabbit secondary antibody (APS0635, 1:10,000) respectively.



Western blotting analysis using cystathionine gamma-lyase antibody (KVA00129). Total cell lysates (30 µg) from various cell lines were loaded and separated by SDS-PAGE. The blot was incubated with cystathionine gamma-lyase antibody (KVA00129, 1:5,000) and HRP-conjugated goat anti-rabbit secondary antibody (APS0635, 1:10,000) respectively.



Immunocytochemical staining of HAP-1 cells with Cystathionine gamma-lyase antibody (KVA00129, 1:1,000). Nuclei were stained blue with DAPI; Cystathionine gamma-lyase was stained magenta with Alexa Fluor® 647. Images were taken using Leica stellaris 5. Protein abundance based on laser Intensity and smart gain: Medium. Scale bar, 20 µm.



Cystathionine gamma-lyase-Alexa Fluor® 647

Flow cytometric analysis of Cystathionine gamma-lyase expression in HAP-1 cells using Cystathionine gamma-lyase antibody (KVA00129, 1:2,000). Green, isotype control; red, Cystathionine gamma-lyase.