

---

**Product Name: KO-Validated Tripartite Motif Containing 28 Recombinant Rabbit Monoclonal Antibody****Catalog #: KVAAb00127**

For research use only.

**Summary**

<b>Description</b>	KO&KD-Validated antibody
<b>Host</b>	Rabbit
<b>Application</b>	WB,FCM,IHC-P
<b>Reactivity</b>	Human,Mouse,Rat
<b>Conjugation</b>	Unconjugated
<b>Modification</b>	Unmodified
<b>Isotype</b>	Rabbit IgG
<b>Clonality</b>	Rabbit mAb
<b>Form</b>	Liquid
<b>Storage</b>	Aliquot and store at -20°C (valid for 12 months). Avoid freeze/thaw cycles.
<b>Shipping</b>	Ice bags
<b>Buffer</b>	Supplied in PBS (pH 7.4) containing 50% glycerol, and 0.02% sodium azide.
<b>Purification</b>	Affinity purification

**Application**

<b>Dilution Ratio</b>	WB 1:4,000-1:20,000; FC 1:200-1:2,000; IHC-P 1:100-1:200
<b>Molecular Weight</b>	Calculated MW: 88.6kDa

**Antigen Information**

<b>Gene Name</b>	TRIM28 TRIM28; Tripartite Motif Containing 28; TIF1B; RNF96; KAP-1; KAP1; Transcription Intermediary Factor 1-Beta; RING Finger Protein 96; TIF1-Beta; PPP1R157; TF1B; Protein Phosphatase 1, Regulatory Subunit 157; RING-Type E3 Ubiquitin Transferase TIF1-Beta; E3
<b>Alternative Names</b>	SUMO-Protein Ligase TRIM28; KRAB-Interacting Protein 1; KRAB-Associated Protein 1; Nuclear Corepressor KAP-1; TIF1beta ; KRIP-1; KRAB [Kruppel-Associated Box Domain]-Associated Protein 1; Transcriptional Intermediary Factor 1-Beta; Tripartite Motif-Containing Protein 28; Tripartite Motif-Containing 28; EC 2.3.2.27; TIF1-BETA; TIF1BETA
<b>Gene ID</b>	10155.0
<b>SwissProt ID</b>	Q13263

## Immunogen

A synthesized peptide derived from human KAP1

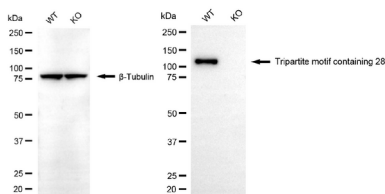
## Background

The protein encoded by this gene mediates transcriptional control by interaction with the Kruppel-associated box repression domain found in many transcription factors. The protein localizes to the nucleus and is thought to associate with specific chromatin regions. The protein is a member of the tripartite motif family. This tripartite motif includes three zinc-binding domains, a RING, a B-box type 1 and a B-box type 2, and a coiled-coil region. [provided by RefSeq, Jul 2008]

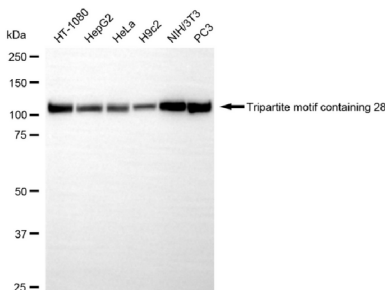
## Research Area

Epigenetics and Nuclear Signaling, Cell Biology, Cancer

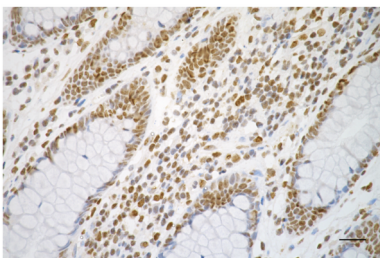
## Image Data



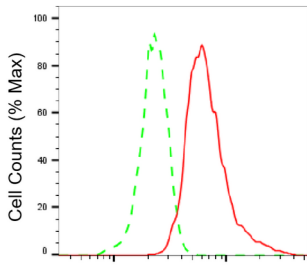
Western blotting analysis using tripartite motif containing 28 antibody (KVA00127). Tripartite motif containing 28 expression in wild type (WT) and tripartite motif containing 28 (TRIM28) knockout (KO) HSHC cells with 20  $\mu$ g of total cell lysates.  $\beta$ -Tubulin serves as a loading control. The blot was incubated with tripartite motif containing 28 antibody (KVA00127, 1:20,000) and HRP-conjugated goat anti-rabbit secondary antibody (APS0635, 1:10,000) respectively.



Western blotting analysis using tripartite motif containing 28 antibody (KVA00127). Total cell lysates (30  $\mu$ g) from various cell lines were loaded and separated by SDS-PAGE. The blot was incubated with tripartite motif containing 28 antibody (KVA00127, 1:20,000) and HRP-conjugated goat anti-rabbit secondary antibody (APS0635, 1:10,000) respectively.



Immunohistochemistry was performed on paraffin-embedded human sigmoid colon carcinoma using tripartite motif containing 28 antibody (KVA00127, 1:200). Antigen retrieval was done in sodium citrate buffer (pH 6.0). DAB was used for detection, with hematoxylin counterstaining. Images were acquired using a Nikon Ci-L Plus microscope (40 $\times$  objective). Scale bar: 25  $\mu$ m.



Tripartite motif containing 28-Alexa Fluor® 647

Flow cytometric analysis of Tripartite motif containing 28 expression in HT-1080 cells using Tripartite motif containing 28 antibody (KVA00127, 1:2,000). Green, isotype control; red, Tripartite motif containing 28.