
Product Name: KO-Validated KIF1B Mouse Monoclonal Antibody**Catalog #: KVA00111**

For research use only.

Summary

Description	KO&KD-Validated antibody
Host	Mouse
Application	WB,FCM,ICC
Reactivity	Human,Mouse,Rat
Conjugation	Unconjugated
Modification	Unmodified
Isotype	Mouse IgG1 kappa
Clonality	Mouse mAb
Form	Liquid
Storage	Aliquot and store at -20°C (valid for 12 months). Avoid freeze/thaw cycles.
Shipping	Ice bags
Buffer	Supplied in PBS (pH 7.4) containing 50% glycerol, and 0.02% sodium azide.
Purification	Affinity purification

Application

Dilution Ratio	WB 1:400-1:2,000; FC 1:200-1:2,000; ICC 1:100-1:1,000
Molecular Weight	Calculated MW: 204.5kDa

Antigen Information

Gene Name	KIF1B KIF1B; Kinesin Family Member 1B; KIAA0591; HMSNII; KLP; Charcot-Marie-Tooth
Alternative Names	Neuropathy Type II; Kinesin-Like Protein KIF1B; CMT2A; CMT2; Kinesin Superfamily Protein KIF1B; KIAA1448; CMT2A1; NBLST1; Klp
Gene ID	23095.0
SwissProt ID	O60333
Immunogen	Recombinant protein of human KIF1B

Background

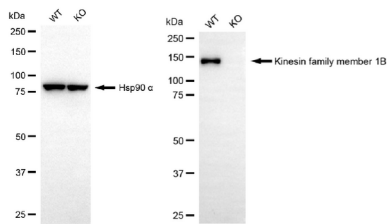
Enables plus-end-directed microtubule motor activity. Involved in apoptotic process involved in development and mitochondrion transport along microtubule. Is active in mitochondrion. Implicated in Charcot-Marie-Tooth disease type 2A1;

hepatocellular carcinoma; multiple sclerosis; neuroblastoma; and ovary epithelial cancer. Biomarker of hepatocellular carcinoma. [provided by Alliance of Genome Resources, Jul 2025]

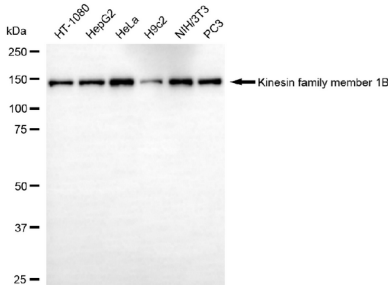
Research Area

Signal Transduction, Neuroscience

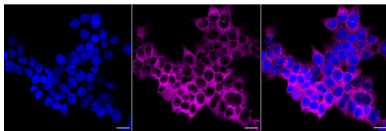
Image Data



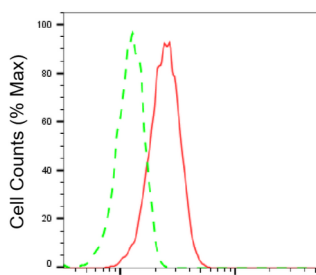
Western blotting analysis using kinesin family member 1B antibody (KVA00111). Kinesin family member 1B expression in wild-type (WT) and kinesin family member 1B (KIF1B) knockout (KO) HeLa cells with 20 μ g of total cell lysates. Hsp90 α serves as a loading control. The blot was incubated with kinesin family member 1B antibody (KVA00111, 1:5,000) and HRP-conjugated goat anti-mouse secondary antibody (APS0631, 1:10,000) respectively.



Western blotting analysis using kinesin family member 1B antibody (KVA00111). Total cell lysates (30 μ g) from various cell lines were loaded and separated by SDS-PAGE. The blot was incubated with kinesin family member 1B antibody (KVA00111, 1:2,000) and HRP-conjugated goat anti-mouse secondary antibody (APS0631, 1:10,000) respectively.



Immunocytochemical staining of C2C12 cells with Kinesin family member 1B antibody (KVA00111, 1:1,000). Nuclei were stained blue with DAPI; Kinesin family member 1B was stained magenta with Alexa Fluor[®] 647. Images were taken using Leica stellaris 5. Protein abundance based on laser Intensity and smart gain: Medium. Scale bar, 20 μ m.



Kinesin family member 1B-Alexa Fluor[®] 647

Flow cytometric analysis of Kinesin family member 1B expression in C2C12 cells using Kinesin family member 1B antibody (KVA00111, 1:2,000). Green, isotype control; red, Kinesin family member 1B.