
Product Name: KO-Validated Keratin 8 Recombinant Rabbit Monoclonal Antibody
Catalog #: KVA00108

For research use only.

Summary

Description	KO&KD-Validated antibody
Host	Rabbit
Application	WB,FCM,ICC
Reactivity	Human
Conjugation	Unconjugated
Modification	Unmodified
Isotype	Rabbit IgG
Clonality	Rabbit mAb
Form	Liquid
Storage	Aliquot and store at -20°C (valid for 12 months). Avoid freeze/thaw cycles.
Shipping	Ice bags
Buffer	Supplied in PBS (pH 7.4) containing 50% glycerol, and 0.02% sodium azide.
Purification	Affinity purification

Application

Dilution Ratio	WB 1:4,000-1:20,000; FC 1:200-1:2,000; ICC 1:100-1:1,000
Molecular Weight	Calculated MW: 53.7kDa

Antigen Information

Gene Name	KRT8
Alternative Names	KRT8; Keratin 8; CK-8; CYK8; K8; CARD2; K2C8; KO; Keratin, Type II Cytoskeletal 8; Type-II Keratin Kb8; Keratin 8, Type II; Keratin-8
Gene ID	3856.0
SwissProt ID	P05787
Immunogen	A synthesized peptide derived from human Cytokeratin 8

Background

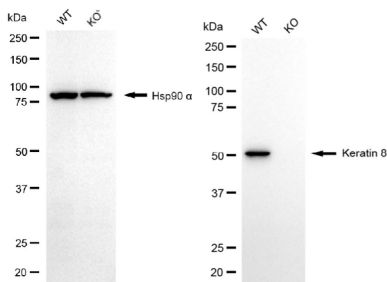
This gene is a member of the type II keratin family clustered on the long arm of chromosome 12. Type I and type II keratins heteropolymerize to form intermediate-sized filaments in the cytoplasm of epithelial cells. The product of this gene typically dimerizes with keratin 18 to form an intermediate filament in simple single-layered epithelial cells. This protein plays a role in

maintaining cellular structural integrity and also functions in signal transduction and cellular differentiation. Mutations in this gene cause cryptogenic cirrhosis. Alternatively spliced transcript variants have been found for this gene. [provided by RefSeq, Jan 2012]

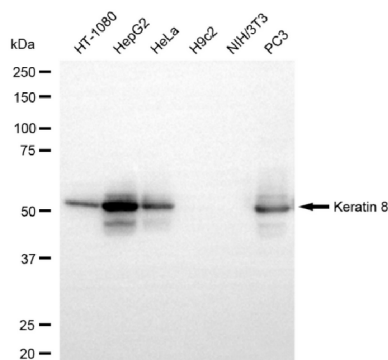
Research Area

Signal Transduction,Cancer

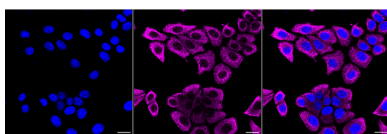
Image Data



Western blotting analysis using keratin 8 antibody (KVA00108). Total cell lysates (30 µg) from various cell lines were loaded and separated by SDS-PAGE. The blot was incubated with keratin 8 antibody (KVA00108, 1:20,000) and HRP-conjugated goat anti-rabbit secondary antibody (APS0635, 1:10,000) respectively.



Immunocytochemical staining of HepG2 cells with Keratin 8 antibody (KVA00108, 1:1,000). Nuclei were stained blue with DAPI; Keratin 8 was stained magenta with Alexa Fluor® 647. Images were taken using Leica stellaris 5. Protein abundance based on laser Intensity and smart gain: High. Scale bar, 20 µm.



Flow cytometric analysis of Keratin 8 expression in HepG2 cells using Keratin 8 antibody (KVA00108, 1:2,000). Green, isotype control; red, Keratin 8.

