
Product Name: KO-Validated Apolipoprotein E Recombinant Rabbit Monoclonal Antibody
Catalog #: KVA00107

For research use only.

Summary

Description	KO&KD-Validated antibody
Host	Rabbit
Application	WB,ICC
Reactivity	Human
Conjugation	Unconjugated
Modification	Unmodified
Isotype	Rabbit IgG
Clonality	Rabbit mAb
Form	Liquid
Storage	Aliquot and store at -20°C (valid for 12 months). Avoid freeze/thaw cycles.
Shipping	Ice bags
Buffer	Supplied in PBS (pH 7.4) containing 50% glycerol, and 0.02% sodium azide.
Purification	Affinity purification

Application

Dilution Ratio	WB 1:1,000-1:5,000; ICC 1:100-1:1,000
Molecular Weight	Calculated MW: 36.2kDa

Antigen Information

Gene Name	APOE
Alternative Names	APOE; Apolipoprotein E; AD2; Alzheimer Disease 2 (APOE*E4-Associated, Late Onset); Apolipoprotein E3; LDLQC5; APO-E; ApoE4; Apo-E; LPG
Gene ID	348.0
SwissProt ID	P02649
Immunogen	A synthesized peptide derived from human Apolipoprotein E

Background

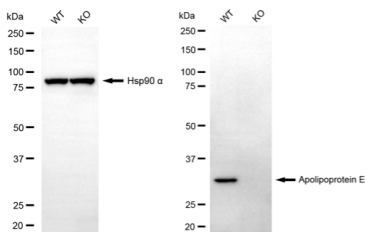
The protein encoded by this gene is a major apoprotein of the chylomicron. It binds to a specific liver and peripheral cell receptor, and is essential for the normal catabolism of triglyceride-rich lipoprotein constituents. This gene maps to chromosome 19 in a cluster with the related apolipoprotein C1 and C2 genes. Mutations in this gene result in familial

dysbetalipoproteinemia, or type III hyperlipoproteinemia (HLP III), in which increased plasma cholesterol and triglycerides are the consequence of impaired clearance of chylomicron and VLDL remnants. [provided by RefSeq, Jun 2016]

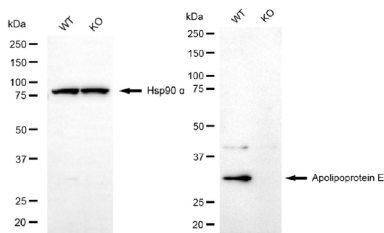
Research Area

Neuroscience, Cardiovascular, Neuroscience, Stem Cells, Signal Transduction, Developmental Biology, Cancer, Metabolism

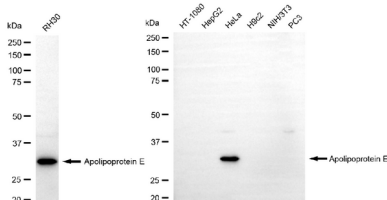
Image Data



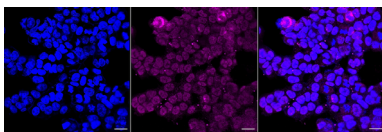
Western blotting analysis using apolipoprotein E antibody (KVA00107). Apolipoprotein E expression in wild type (WT) and apolipoprotein E (APOE) knockout (KO) 293T cells with 20 μ g of total cell lysates. Hsp90 α serves as a loading control. The blot was incubated with apolipoprotein E antibody (KVA00107, 1:5,000) and HRP-conjugated goat anti-rabbit secondary antibody (APS0635, 1:10,000) respectively.



Western blotting analysis using apolipoprotein E antibody (KVA00107). Apolipoprotein E expression in wild type (WT) and apolipoprotein E (APOE) knockout (KO) HSHC cells with 20 μ g of total cell lysates. Hsp90 α serves as a loading control. The blot was incubated with apolipoprotein E antibody (KVA00107, 1:5,000) and HRP-conjugated goat anti-rabbit secondary antibody (APS0635, 1:10,000) respectively.



Western blotting analysis using apolipoprotein E antibody (KVA00107). Total cell lysates (30 μ g) from various cell lines were loaded and separated by SDS-PAGE. The blot was incubated with apolipoprotein E antibody (KVA00107, 1:5,000) and HRP-conjugated goat anti-rabbit secondary antibody (APS0635, 1:10,000) respectively.



Immunocytochemical staining of HAP-1 cells with Apolipoprotein E antibody (KVA00107, 1:1,000). Nuclei were stained blue with DAPI; Apolipoprotein E was stained magenta with Alexa Fluor[®] 647. Images were taken using Leica stellaris 5. Protein abundance based on laser Intensity and smart gain: Medium. Scale bar: 20 μ m.