

---

**Product Name: KO-Validated Fyn Recombinant Rabbit Monoclonal Antibody****Catalog #: KVA00106**

For research use only.

**Summary**

<b>Description</b>	KO&KD-Validated antibody
<b>Host</b>	Rabbit
<b>Application</b>	WB,ICC,IHC-P
<b>Reactivity</b>	Human,Mouse,Rat
<b>Conjugation</b>	Unconjugated
<b>Modification</b>	Unmodified
<b>Isotype</b>	Rabbit IgG
<b>Clonality</b>	Rabbit mAb
<b>Form</b>	Liquid
<b>Storage</b>	Aliquot and store at -20°C (valid for 12 months). Avoid freeze/thaw cycles.
<b>Shipping</b>	Ice bags
<b>Buffer</b>	Supplied in PBS (pH 7.4) containing 50% glycerol, and 0.02% sodium azide.
<b>Purification</b>	Affinity purification

**Application**

<b>Dilution Ratio</b>	WB 1:1,000-1:5,000; ICC 1:100-1:1,000; IHC-P 1:100-1:200
<b>Molecular Weight</b>	Calculated MW: 60.8kDa

**Antigen Information**

<b>Gene Name</b>	FYN
<b>Alternative Names</b>	FYN; FYN Proto-Oncogene, Src Family Tyrosine Kinase; SLK; SYN; FYN Oncogene Related To SRC, FGR, YES; Tyrosine-Protein Kinase Fyn; Proto-Oncogene C-Fyn; Proto-Oncogene Syn; Src-Like Kinase; EC 2.7.10.2; MGC45350; OKT3-Induced Calcium Influx Regulator; Tyrosine Kinase P59fyn(T); Src/Yes-Related Novel; C-Syn Protooncogene; EC 2.7.10; P59-FYN; P59-Fyn
<b>Gene ID</b>	2534.0
<b>SwissProt ID</b>	P06241
<b>Immunogen</b>	A synthesized peptide derived from human Fyn

**Background**

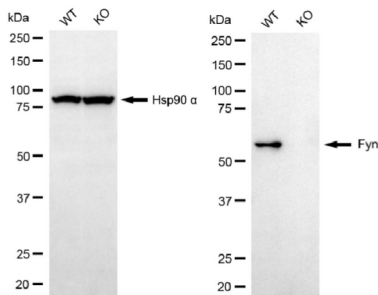
This gene is a member of the protein-tyrosine kinase oncogene family. It encodes a membrane-associated tyrosine kinase that

has been implicated in the control of cell growth. The protein associates with the p85 subunit of phosphatidylinositol 3-kinase and interacts with the fyn-binding protein. Alternatively spliced transcript variants encoding distinct isoforms exist. [provided by RefSeq, Jul 2008]

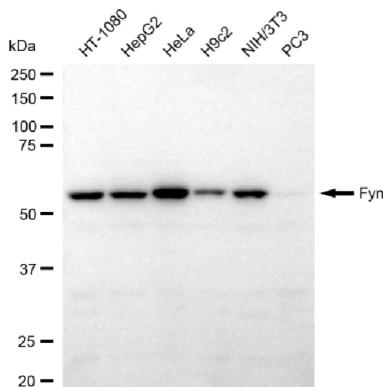
## Research Area

Neuroscience, Signal Transduction, Cancer

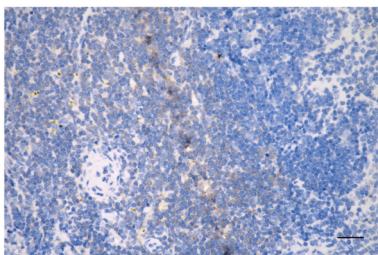
## Image Data



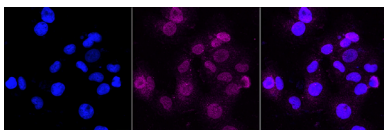
Western blotting analysis using Fyn antibody (KVA00106). Fyn expression in wild-type (WT) and FYN knockout (KO) 293T cells with 20  $\mu$ g of total cell lysates. Hsp90  $\alpha$  serves as a loading control. The blot was incubated with Fyn antibody (KVA00106, 1:5,000) and HRP-conjugated goat anti-rabbit secondary antibody (APS0635, 1:10,000) respectively.



Western blotting analysis using fyn antibody (KVA00106). Total cell lysates (30  $\mu$ g) from various cell lines were loaded and separated by SDS-PAGE. The blot was incubated with fyn antibody (KVA00106, 1:5,000) and HRP-conjugated goat anti-rabbit secondary antibody (APS0635, 1:10,000) respectively.



Immunohistochemistry was performed on paraffin-embedded mouse spleen using fyn antibody (KVA00106, 1:200). Antigen retrieval was done in sodium citrate buffer (pH 6.0). DAB was used for detection, with hematoxylin counterstaining. Images were acquired using a Nikon Ci-L Plus microscope (40 $\times$  objective). Scale bar: 25  $\mu$ m.



Immunocytochemical staining of HT-1080 cells with Fyn antibody (KVA00106, 1:1,000). Nuclei were stained blue with DAPI; Fyn was stained magenta with Alexa Fluor<sup>®</sup> 647. Images were taken using Leica stellaris 5. Protein abundance based on laser Intensity and smart gain: Medium. Scale bar, 20  $\mu$ m.