
Product Name: KO-Validated Endonuclease G Recombinant Rabbit Monoclonal Antibody
Catalog #: KVA00103

For research use only.

Summary

Description	KO&KD-Validated antibody
Host	Rabbit
Application	WB,FCM,ICC
Reactivity	Human,Mouse,Rat
Conjugation	Unconjugated
Modification	Unmodified
Isotype	Rabbit IgG
Clonality	Rabbit mAb
Form	Liquid
Storage	Aliquot and store at -20°C (valid for 12 months). Avoid freeze/thaw cycles.
Shipping	Ice bags
Buffer	Supplied in PBS (pH 7.4) containing 50% glycerol, and 0.02% sodium azide.
Purification	Affinity purification

Application

Dilution Ratio	WB 1:1,000-1:5,000; FC 1:200-1:2,000; ICC 1:100-1:1,000
Molecular Weight	Calculated MW: 32.6kDa

Antigen Information

Gene Name	ENDOG
Alternative Names	ENDOG; Endonuclease G; Endonuclease G, Mitochondrial; Endo G; Mitochondrial Endonuclease G; EC 3.1.30.-
Gene ID	2021.0
SwissProt ID	Q14249
Immunogen	A synthesized peptide derived from human Endo G

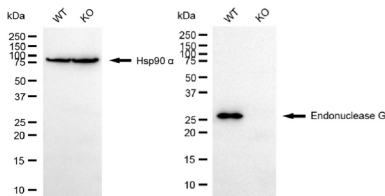
Background

The protein encoded by this gene is a nuclear encoded endonuclease that is localized in the mitochondrion. The encoded protein is widely distributed among animals and cleaves DNA at GC tracts. This protein is capable of generating the RNA primers required by DNA polymerase gamma to initiate replication of mitochondrial DNA. [provided by RefSeq, Jul 2008]

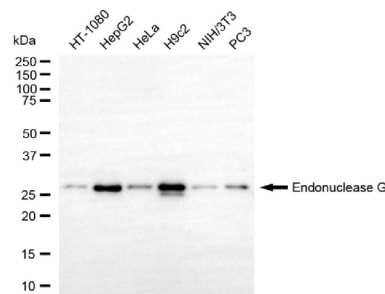
Research Area

Cell Biology, Epigenetics and Nuclear Signaling, Cancer, Metabolism

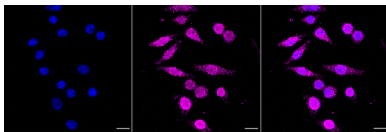
Image Data



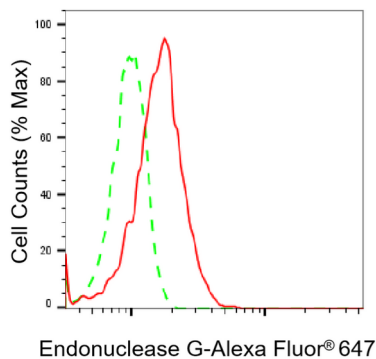
Western blotting analysis using endonuclease G antibody (KVA00103). Endonuclease G expression in wild type (WT) and endonuclease G (ENDOG) knockout (KO) HSHC cells with 20 μ g of total cell lysates. Hsp90 α serves as a loading control. The blot was incubated with endonuclease G antibody (KVA00103, 1:5,000) and HRP-conjugated goat anti-rabbit secondary antibody (APS0635, 1:10,000) respectively.



Western blotting analysis using endonuclease G antibody (KVA00103). Total cell lysates (30 μ g) from various cell lines were loaded and separated by SDS-PAGE. The blot was incubated with endonuclease G antibody (KVA00103, 1:5,000) and HRP-conjugated goat anti-rabbit secondary antibody (APS0635, 1:10,000) respectively.



Immunocytochemical staining of HepG2 cells with Endonuclease G antibody (KVA00103, 1:1,000). Nuclei were stained blue with DAPI; Endonuclease G was stained magenta with Alexa Fluor[®] 647. Images were taken using Leica stellaris 5. Protein abundance based on laser Intensity and smart gain: Medium. Scale bar, 20 μ m.



Flow cytometric analysis of Endonuclease G expression in HepG2 cells using Endonuclease G antibody (KVA00103, 1:2,000). Green, isotype control; red, Endonuclease G.