
Product Name: KO-Validated Natriuretic Peptide Receptor 3 Recombinant Rabbit Monoclonal Antibody**Catalog #: KVAAb00102**

For research use only.

Summary

Description	KO&KD-Validated antibody
Host	Rabbit
Application	WB,FCM,ICC
Reactivity	Human,Mouse,Rat
Conjugation	Unconjugated
Modification	Unmodified
Isotype	Rabbit IgG
Clonality	Rabbit mAb
Form	Liquid
Storage	Aliquot and store at -20°C (valid for 12 months). Avoid freeze/thaw cycles.
Shipping	Ice bags
Buffer	Supplied in PBS (pH 7.4) containing 50% glycerol, and 0.02% sodium azide.
Purification	Affinity purification

Application

Dilution Ratio	WB 1:1,000-1:5,000; FC 1:200-1:2,000; ICC 1:100-1:1,000
Molecular Weight	Calculated MW: 59.8kDa

Antigen Information

Gene Name	NPR3 NPR3; Natriuretic Peptide Receptor 3; C5orf23; GUCY2B; ANPRC; NPRC; Natriuretic Peptide Receptor C/Guanylate Cyclase C (Atrionatriuretic Peptide Receptor C); Atrial Natriuretic Peptide Clearance Receptor; Atrial Natriuretic Peptide Receptor Type C; Atrial Natriuretic Peptide Receptor 3; Atrionatriuretic Peptide Receptor C; Guanylate Cyclase C; FLJ14054; ANPR-C; ANP-C; NPR-C; Chromosome 5 Open Reading Frame 23; Natriuretic Peptide Receptor C; BOMOS
Alternative Names	
Gene ID	4883.0
SwissProt ID	P17342
Immunogen	A synthesized peptide derived from human Natriuretic Peptide Receptor C

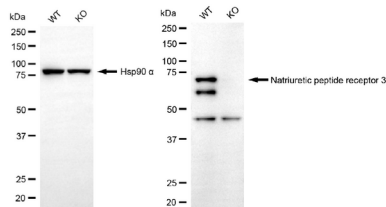
Background

This gene encodes one of three natriuretic peptide receptors. Natriuretic peptides are small peptides which regulate blood volume and pressure, pulmonary hypertension, and cardiac function as well as some metabolic and growth processes. The product of this gene encodes a natriuretic peptide receptor responsible for clearing circulating and extracellular natriuretic peptides through endocytosis of the receptor. Multiple transcript variants encoding different isoforms have been found for this gene.[provided by RefSeq, Feb 2011]

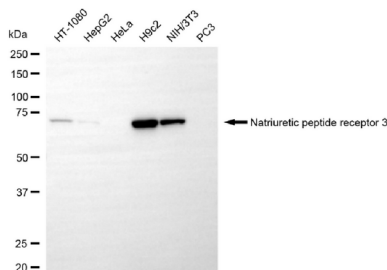
Research Area

Cardiovascular,Signal Transduction

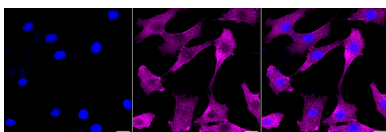
Image Data



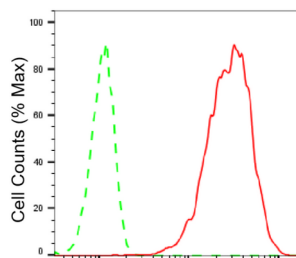
Western blotting analysis using natriuretic peptide receptor 3 antibody (KVA00102). Natriuretic peptide receptor 3 expression in wild-type (WT) and natriuretic peptide receptor 3 (NPR3) knockout (KO) HeLa cells with 30 μ g of total cell lysates. Hsp90 α serves as a loading control. The blot was incubated with natriuretic peptide receptor 3 antibody (KVA00102, 1:5,000) and HRP-conjugated goat anti-rabbit secondary antibody (APS0635, 1:10,000) respectively.



Western blotting analysis using natriuretic peptide receptor 3 antibody (KVA00102). Total cell lysates (30 μ g) from various cell lines were loaded and separated by SDS-PAGE. The blot was incubated with natriuretic peptide receptor 3 antibody (KVA00102, 1:5,000) and HRP-conjugated goat anti-rabbit secondary antibody (APS0635, 1:10,000) respectively.



Immunocytochemical staining of C2C12 cells with Natriuretic peptide receptor 3 antibody (KVA00102, 1:1,000). Nuclei were stained blue with DAPI; Natriuretic peptide receptor 3 was stained magenta with Alexa Fluor[®] 647. Images were taken using Leica stellaris 5. Protein abundance based on laser Intensity and smart gain: Medium. Scale bar, 20 μ m.



Natriuretic peptide receptor 3-Alexa Fluor[®] 647

Flow cytometric analysis of Natriuretic peptide receptor 3 expression in C2C12 cells using Natriuretic peptide receptor 3 antibody (KVA00102, 1:2,000). Green, isotype control; red, Natriuretic peptide receptor 3.